



Oakmark Fund Advisor Class (OAYMX) - Trend Capture Overlay

April 11, 2018

Executive Summary

Overview

Superior performance on a consistent basis comes from the ability to be in synchrony with major price trends. The ability to capture a large part of bull trends and to avoid most of the bear trends in individual stocks and sectors can dramatically impact returns across market cycles and deliver superior long term performance. The Trendrating solution is designed to improve this ability by providing intelligent analytics that can complement and enhance the investment decision process and produce tangible results.

We can demonstrate Trendrating's ability to materially influence portfolio performance through a historical overlay of its trend capture model on the actual holdings of a portfolio. Through this analysis we demonstrate that induction can seamlessly integrate into the existing workflow of an investment strategy and have a material impact on the performance of the investment strategy.

Trendrating's trend capture model has the unique ability to identify and score the prevailing price trend of a security with high accuracy. The ability to distinguish between securities based on their respective price trend should be of paramount importance to every portfolio no matter the type of its investment strategy. Every investment manager should infuse the decision making process with information that facilitates the selection of securities whose prices are trending, rather than ones whose price trends are disconnected from their fundamentals.

Trendrating Model

The Trendrating model assigns each security a directional rating; uptrends (**A** or **B**) and downtrends (**C** or **D**). A continuous absolute rating scale, **Smart Momentum (SM)**, is constructed to facilitate relative ranking of a universe of securities. The discrete rating distinguishes between securities in uptrends and downtrends, whilst the continuous rating allows ranking within the same rating bucket. In tandem, the two rating frameworks facilitate a flexible and robust framework for security selection and portfolio construction.

Analysis Framework

- Select holdings history for which constituent history is complete and for which there are very few missing periods in the history selected for the analysis
- The universe of stocks in the benchmark associated with the investment fund is used as a buy universe from which to find alternative securities. In absence of a named benchmark, an appropriate buy universe is assigned for the analysis
- In each rebalancing period in the holdings history of the portfolio:
 - Identify all **C** & **D** rated securities
 - Amongst the **C** & **D** rated securities, identify stocks with extreme negative SM scores¹ whilst in a negative price trend, are quite susceptible to sharp upward price swings during and post market shocks. Good risk management practice advocates a robust mechanism for identifying outliers and then implementing a framework of insulating the investment portfolio from their erratic behaviour. In this analysis, we do not alter positions with extreme SM scores
 - Reallocate weight of **C** & **D** rated securities into an **A** or **B** rated security with the highest SM score in the same region/country, industry/sector, and currency²
- Returns for the Fund, Trend Capture Portfolio³, and Benchmark are price returns calculated from the individual constituent level for each of the three portfolios

¹Our empirical research shows that an SM scores of -2.90 is a valid extreme threshold value

²User determined parameters that are relaxed in hierarchal order if no optimal match is found

³The portfolio generated as a result of the trend capture overlay on the holdings of the investment fund

Report Description

- Trend Overlay Summary Data
 - Key info: Provides information on analysis history, fund benchmark, and the analysis rebalancing frequency
 - The two bar charts respectively compare the annual return and annual volatility of the original fund and of the trend capture portfolio
 - The line chart captures the cumulative return of the fund, of the trend capture portfolio, and of the benchmark if applicable
 - Summary Metrics: This table provides key performance and risk metrics of the original fund and of the trend capture portfolio
- Risk-Return Profile
 - Comparative Analysis
 - Annualised Excess Return analysis: The comparisons of the excess return of the trend capture portfolio vs the fund, and if applicable, of the fund vs the benchmark and of the trend capture portfolio vs the benchmark
 - Annualised Tracking Error analysis: The tracking error between the trend capture fund and the original fund captures the magnitude of the differences between the overlay portfolio and the original portfolio. It should be different enough without departing from the original investment strategy. The comparisons of the tracking errors versus the benchmark, if applicable, validates the fact that the overlay strategy does not change the investment mandate
 - Annual Tables
 - The first set of columns tabulate the year by year returns of the trend capture portfolio and its excess return over the original fund and its benchmark
 - The next set of columns present the volatility comparison where the key message is that the volatility of the trend capture portfolio should not differ materially from that of the original fund
 - The third set of results illustrates the reduction in drawdowns that can be achieved through the trend capture overlay. Reduction in downside risk during market declines is perhaps the most important benefit a model can provide
 - TCR Analysis
 - TCR (Trend Capture Rating) is a forward-looking risk metric of an aggregate⁴ calculated from the constituent level weights and ratings from the Trendrating model
 - The trend capture overlay should raise the TCR of the original portfolio
 - Portfolios that maintain a higher TCR tend to outperform and periods with higher TCR tend to deliver superior returns
 - Trendrating's recommendation to clients is to endeavour to maintain a high TCR to improve consistency of portfolio returns
- Historical Portfolio Details
 - The top section provides information on the number of number and weight of the **C** & **D** rated constituents that have been switched on a chosen rebalance period⁵
 - Transaction Table: Tabulates all the matched trades performed in the latest rebalancing period and contains the Ticker, Name, Weight, Rating, and Smart Momentum score of each security traded in the given holding period
- Allocation
 - Regional allocation for the latest rebalance period
 - Sector allocation for the latest rebalance period
- Appendix
 - Contains the full history of trades performed in the analysis presented by rebalance period and identifies all trades securities and matched trades

⁴Portfolio, Index, Sector etc.

⁵The default is the latest rebalance period

Trend Overlay Summary

Key info

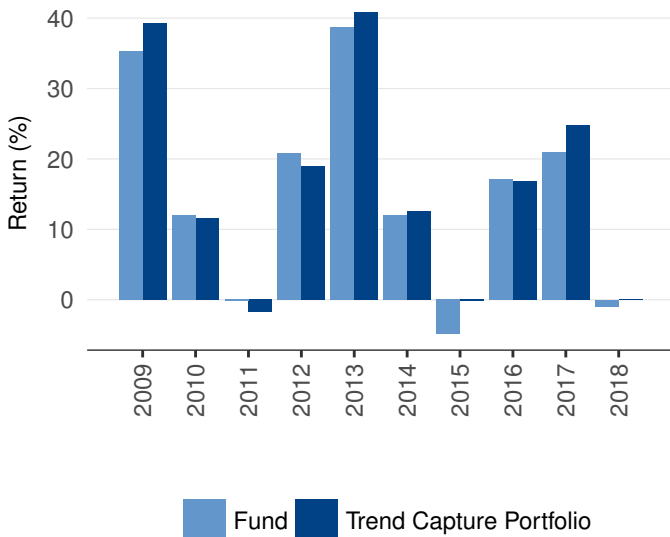
Data Range

2009-01-01 to 2018-03-30

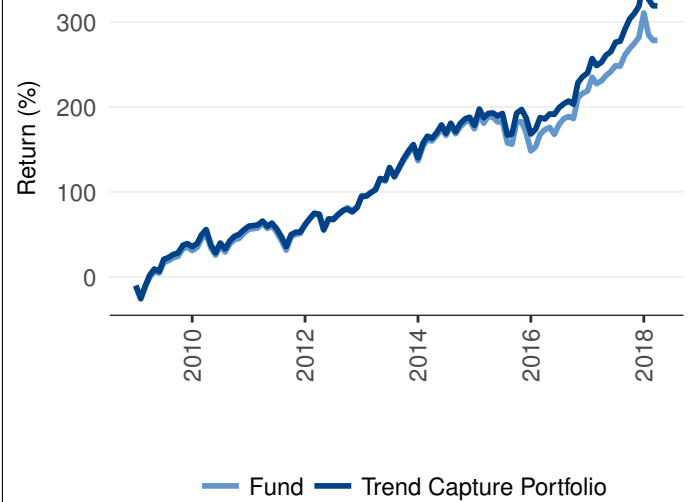
Rebalancing

Monthly

Return



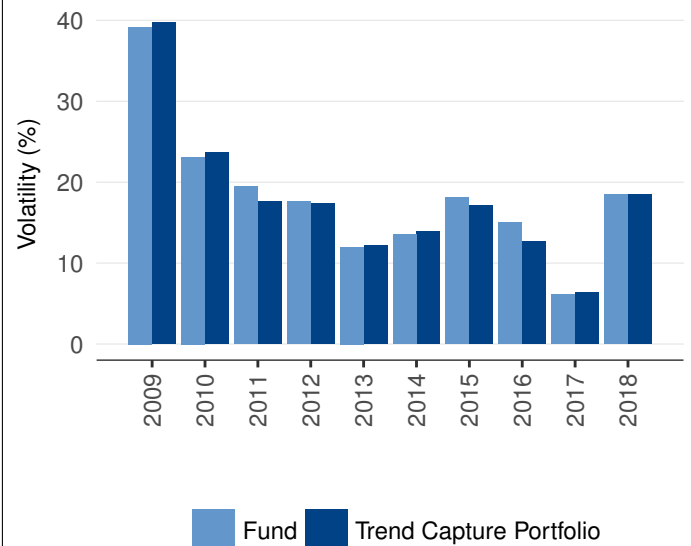
Cumulative Return



Summary Metrics

	Fund	TC Portfolio	Diff
PERFORMANCE			
Annualised (%)	15.49	16.61	1.12
Monthly Avg (%)	1.35	1.42	0.08
Hit Rate (%)	68.47	69.37	0.90
RISK			
Annualised volatility (%)	20.15	19.70	-0.44
Max Drawdown (%)	-26.09	-24.90	1.20
Skewness	-0.25	-0.03	0.23
Kurtosis	1.51	2.42	0.91
KEY RATIOS			
Information Ratio	0.77	0.84	0.07
Sortino Ratio	0.41	0.46	0.05
WEIGHT SWITCHED			
Monthly Avg (%)		7.50	

Volatility



	Fund	TC Portfolio	Diff	Diff (%)
Cumulative Return (%)	279.04	314.46	35.41	12.69
Avg Drawdown (%)	-6.76	-6.73	0.04	0.55
Avg TCR	B	A		

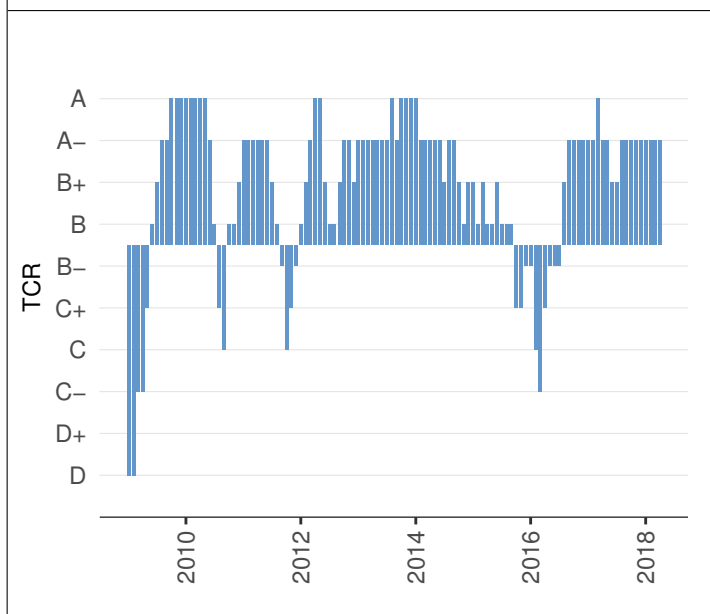
Risk-Return Profile

Comparative Analysis

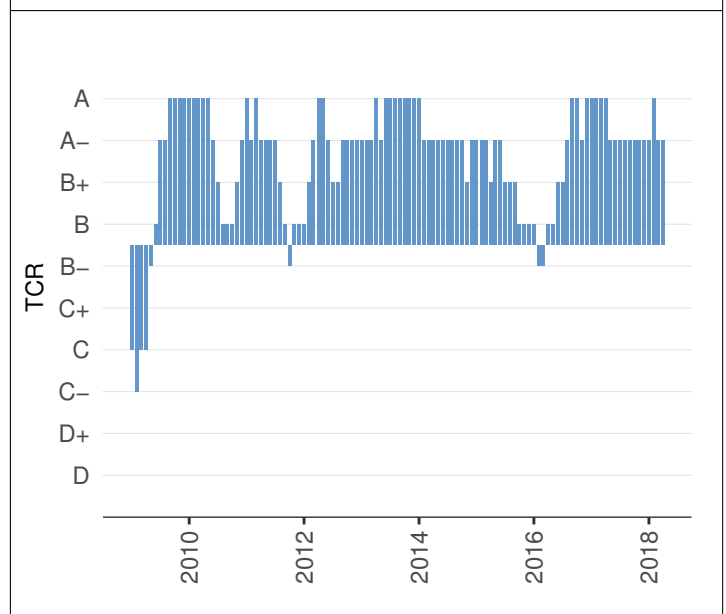
	Fund	Fund
Annualised Excess Return (%)		Annualised Tracking Error (%)
Trend Capture Portfolio	0.93	Trend Capture Portfolio
		2.93

Year	Return (%) TC Port	Excess over Fund	Volatility (%) TC Port	Excess over Fund	Max Drawdown (%) TC Port	Excess over Fund
2018	0.05	1.04	18.48	-0.04	-7.33	0.51
2017	24.79	3.82	6.32	0.21	-2.31	-0.03
2016	16.80	-0.25	12.62	-2.40	-6.66	1.37
2015	-0.21	4.66	17.14	-0.93	-10.43	1.72
2014	12.57	0.60	13.88	0.35	-6.19	0.35
2013	40.80	2.07	12.21	0.22	-4.72	-0.43
2012	18.89	-1.93	17.32	-0.31	-11.05	0.11
2011	-1.71	-1.52	17.64	-1.87	-18.17	1.34
2010	11.61	-0.39	23.70	0.59	-17.59	-0.92
2009	39.28	4.04	39.73	0.56	-25.09	1.00

Fund TCR



Trend Capture Portfolio TCR



Historical Portfolio Details

Holding period: 2018-03-01 to 2018-03-29

	Fund	TC Port
Number of holdings	53	53
Number of C & D rated holdings - switched	3	-
Weight of C & D rated holdings - switched (%)	5.13	-

Transaction table

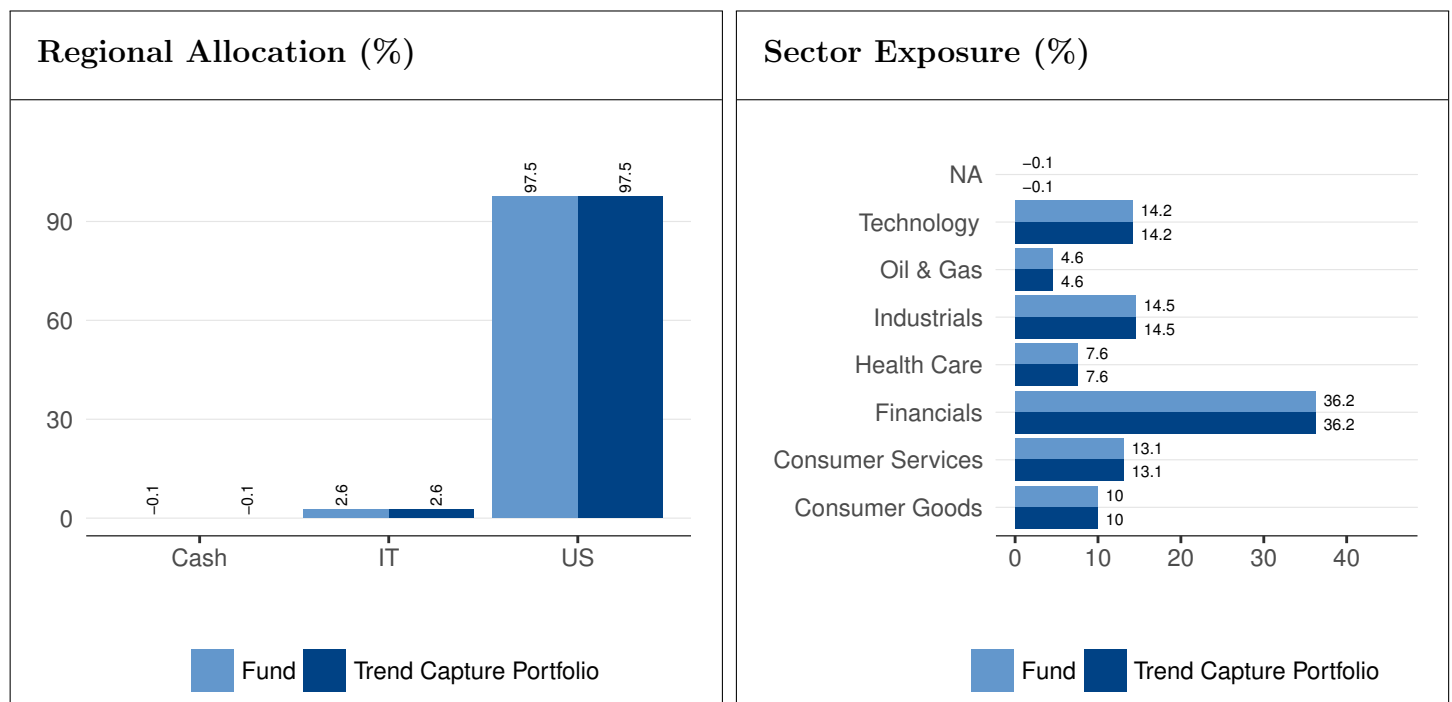
The table shows the fund portfolio C & D rated positions at the beginning of the holding period. These positions have been switched with A and B rated stocks near by mkt cap, market and sector in respect to the original fund positions.

Switched positions

Ticker	Name	R	SM	W (%)	C (%)	Ticker	Name	R	SM	W (%)	C (%)
AIG	American International	D	-2.85	2.54	-0.09	CMA	Comerica	A	2.52	2.54	-0.03
UL	Unilever ADR	C	-1.86	1.93	0.16	ATVI	Activision Blizzard	A	3.00	1.93	-0.12
WHR	Whirlpool	D	-2.87	0.67	-0.03	STZ	Constellation Brands	A	2.44	0.67	0.04

R - Rating, SM - Smart Momentum, W - Weight, C - Contribution to Return

Allocation



Appendix

Switched positions (Fund vs Trend Capture Portfolio)

Date	Ticker	Name	R	SM	W (%)	Ticker	Name	R	SM	W (%)
2009-01-01	WU	The Western Union	D	-2.92	1.90					
2009-01-01	AXP	American Express	D	-2.94	1.80					
2009-01-01	BA	Boeing	D	-2.92	2.10					
2009-01-01	BAC	Bank Of America	D	-2.94	1.80					
2009-01-01	BBY	Best Buy	D	-2.90	3.00					
2009-01-01	BDK	Black & Decker	D	-2.90	2.70	UST	UST Inc	A	2.22	2.70
2009-01-01	BK	Bank Of New York Mellon	D	-2.91	2.50					
2009-01-01	CM-CSA	Comcast	D	-2.88	3.10	APOL	Apollo Educat Grp	A	2.29	3.10
2009-01-01	COF	Capital One Financial	D	-2.91	2.70					
2009-01-01	DELL	Dell	D	-2.93	1.90					
2009-01-01	YUM	Yum Brands	D	-2.87	3.60	FDO	Family Dollar Stores	A	2.27	3.60
2009-01-01	DIS	Walt Disney	D	-2.89	3.00	AZO	Autozone	B	1.20	3.00
2009-01-01	HD	The Home Depot	D	-2.87	2.80	SWN	Southwestern Energy	A	2.33	2.80
2009-01-01	HOG	Harley-davidson	D	-2.93	2.00					
2009-01-01	GSK	Glaxosmithkline Adr	D	-2.87	2.90	AMGN	Amgen	A	2.24	2.90
2009-01-01	HRB	H.& R.block	C	-1.86	4.10	ROH	Rohm & Haas	A	2.23	4.10
2009-01-01	MS	Morgan Stanley	D	-2.96	1.50					
2009-01-01	ITW	Illinois Tool Works	D	-2.89	1.90	VMC	Vulcan Materials Co	B	1.20	1.90
2009-01-01	LB	L Brands	D	-2.92	1.90					
2009-01-01	MCD	McDonald's	C	-1.84	1.90	CEPH	Cephalon	A	2.22	1.90
2009-01-01	MDT	Medtronic	D	-2.91	2.70					
2009-01-01	MRK	Merck & Co	D	-2.92	3.50					
2009-01-01	MSFT	Microsoft	D	-2.90	1.30	MFE	McAfee	B	1.22	1.30
2009-01-01	OMC	Omnicom	D	-2.91	0.60					
2009-01-01	TXN	Texas Instruments	D	-2.92	2.40					
2009-01-01	DEO	Diageo Adr	D	-2.89	2.80	ADM	Archer Daniels Midland	B	1.31	2.80
2009-01-01	XRX	Xerox	D	-2.92	2.00					
2009-01-01	INTC	Intel	D	-2.90	3.00					
2009-01-01	CSCO	Cisco Systems	D	-2.90	2.00					
2009-01-01	EBAY	Ebay	D	-2.93	1.40					
2009-01-01	KSS	Kohl's	D	-2.89	3.00	SUN	Sunoco	B	1.30	3.00
2009-01-01	VIAB	Viacom	D	-2.93	2.50					
2009-01-01	JPM	Jpmorgan Chase	D	-2.89	3.10	FHN	First Horizon National	B	1.36	3.10
2009-01-01	TWX	Time Warner	D	-2.90	3.30	CINF	Cincinnati Financial	B	1.26	3.30
2009-01-01	BEAM	Beam Inc	D	-2.92	2.70					
2009-01-01	C	Citigroup	D	-2.95	1.60					
2009-01-01	HPQ	Hp	D	-2.87	3.00	KG	King Pharmaceuticals	B	1.22	3.00
2009-01-01	QVCA	Liberty Interactive	D	-2.97	0.60					
2009-01-01	TEL	Te Connectivity	D	-2.93	2.20					
2009-02-02	WU	The Western Union	D	-2.92	2.10					
2009-02-02	AXP	American Express	D	-2.94	1.90					
2009-02-02	BA	Boeing	D	-2.92	2.20					
2009-02-02	BAC	Bank Of America	D	-2.97	0.90					
2009-02-02	BBY	Best Buy	D	-2.90	3.30					
2009-02-02	BDK	Black & Decker	D	-2.93	2.20					
2009-02-02	BK	Bank Of New York Mellon	D	-2.91	2.70					
2009-02-02	CM-CSA	Comcast	D	-2.89	3.10	APOL	Apollo Educat Grp	A	2.33	3.10
2009-02-02	COF	Capital One Financial	D	-2.95	1.60					
2009-02-02	DELL	Dell	D	-2.94	2.00					
2009-02-02	YUM	Yum Brands	D	-2.89	3.60	FDO	Family Dollar Stores	A	2.29	3.60
2009-02-02	DIS	Walt Disney	D	-2.90	3.00					

Date	Ticker	Name	R	SM	W (%)	Ticker	Name	R	SM	W (%)
2009-02-02	HD	The Home Depot	D	-2.86	2.90	AZO	Autozone	A	2.19	2.90
2009-02-02	HOG	Harley-davidson	D	-2.95	1.60					
2009-02-02	GSK	Glaxosmithkline Adr	D	-2.88	3.10	UNH	Unitedhealth	A	2.30	3.10
2009-02-02	HRB	H.& R.block	C	-1.87	4.20	DRI	Darden Restaurants	B	1.32	4.20
2009-02-02	MS	Morgan Stanley	D	-2.95	2.20					
2009-02-02	ITW	Illinois Tool Works	D	-2.90	2.00					
2009-02-02	LB	L Brands	D	-2.94	1.70					
2009-02-02	MCD	Mcdonald's	C	-1.85	2.00	ABC	Amerisourcebergen	B	1.22	2.00
2009-02-02	MDT	Medtronic	D	-2.90	3.20					
2009-02-02	MRK	Merck & Co	D	-2.92	3.70					
2009-02-02	MSFT	Microsoft	D	-2.91	1.40					
2009-02-02	OMC	Omnicom	D	-2.91	0.60					
2009-02-02	TXN	Texas Instruments	D	-2.92	2.80					
2009-02-02	DEO	Diageo Adr	D	-2.90	3.00	ADM	Archer Daniels Midland	B	1.30	3.00
2009-02-02	XRX	Xerox	D	-2.94	1.90					
2009-02-02	INTC	Intel	D	-2.91	3.10					
2009-02-02	CSCO	Cisco Systems	D	-2.91	2.10					
2009-02-02	EBAY	Ebay	D	-2.94	1.30					
2009-02-02	KSS	Kohl's	D	-2.88	3.40	SUN	Sunoco	A	2.30	3.40
2009-02-02	VIAB	Viacom	D	-2.95	2.20					
2009-02-02	JPM	Jpmorgan Chase	D	-2.92	2.80					
2009-02-02	TWX	Time Warner	D	-2.91	3.50					
2009-02-02	BEAM	Beam Inc	D	-2.94	2.40					
2009-02-02	C	Citigroup	D	-2.97	1.00					
2009-02-02	HPQ	Hp	D	-2.88	3.30	TLAB	Tellabs	B	1.21	3.30
2009-02-02	QVCA	Liberty Interactive	D	-2.97	0.70					
2009-02-02	TEL	Te Connectivity	D	-2.94	2.10					
2009-03-02	WU	The Western Union	D	-2.94	2.00					
2009-03-02	AXP	American Express	D	-2.96	1.50					
2009-03-02	BA	Boeing	D	-2.94	1.90					
2009-03-02	BAC	Bank Of America	D	-2.98	0.60					
2009-03-02	BDK	Black & Decker	D	-2.94	2.00					
2009-03-02	BK	Bank Of New York Mellon	D	-2.93	2.60					
2009-03-02	CM- CSA	Comcast	D	-2.91	3.20					
2009-03-02	COF	Capital One Financial	D	-2.97	1.20					
2009-03-02	DELL	Dell	D	-2.95	2.20					
2009-03-02	YUM	Yum Brands	D	-2.90	3.90	FDO	Family Dollar Stores	A	2.29	3.90
2009-03-02	DIS	Walt Disney	D	-2.92	2.90					
2009-03-02	HOG	Harley-davidson	D	-2.96	1.50					
2009-03-02	GSK	Glaxosmithkline Adr	D	-2.90	3.00	AMGN	Amgen	A	2.20	3.00
2009-03-02	ITW	Illinois Tool Works	D	-2.92	1.90					
2009-03-02	LB	L Brands	D	-2.95	1.80					
2009-03-02	MCD	Mcdonald's	C	-1.87	2.20	APOL	Apollo Educat Grp	A	2.27	2.20
2009-03-02	MDT	Medtronic	D	-2.92	3.10					
2009-03-02	MRK	Merck & Co	D	-2.94	3.70					
2009-03-02	MSFT	Microsoft	D	-2.92	1.50					
2009-03-02	OMC	Omnicom	D	-2.92	0.60					
2009-03-02	TXN	Texas Instruments	D	-2.93	2.90					
2009-03-02	WMT	Wal-mart Stores	D	-2.87	2.80	AZO	Autozone	A	2.20	2.80
2009-03-02	DEO	Diageo Adr	D	-2.91	3.00					
2009-03-02	XRX	Xerox	D	-2.96	1.60					
2009-03-02	INTC	Intel	D	-2.92	3.40					
2009-03-02	CSCO	Cisco Systems	D	-2.91	2.40					
2009-03-02	EBAY	Ebay	D	-2.95	1.40					
2009-03-02	VIAB	Viacom	D	-2.95	2.60					
2009-03-02	JPM	Jpmorgan Chase	D	-2.93	2.80					
2009-03-02	TWX	Time Warner	D	-2.93	3.30					
2009-03-02	BEAM	Beam Inc	D	-2.96	2.00					
2009-03-02	C	Citigroup	D	-2.99	0.40					
2009-03-02	HPQ	Hp	D	-2.90	3.20	AKAM	Akamai Technologies	B	1.29	3.20
2009-03-02	QVCA	Liberty Interactive	D	-2.97	0.80					
2009-03-02	TEL	Te Connectivity	D	-2.96	1.70					
2009-04-01	ECA	Encana	D	-2.91	1.30					
2009-04-01	WU	The Western Union	D	-2.93	2.00					

Date	Ticker	Name	R	SM	W (%)	Ticker	Name	R	SM	W (%)
2009-04-01	AXP	American Express	D	-2.95	1.70					
2009-04-01	BA	Boeing	D	-2.93	2.00					
2009-04-01	BAC	Bank Of America	D	-2.97	1.00					
2009-04-01	BDK	Black & Decker	D	-2.92	2.70					
2009-04-01	BK	Bank Of New York Mellon	D	-2.91	3.00					
2009-04-01	CM-CSA	Comcast	D	-2.90	2.90	DRI	Darden Restaurants	A	2.43	2.90
2009-04-01	COF	Capital One Financial	D	-2.96	2.50					
2009-04-01	DELL	Dell	D	-2.94	2.10					
2009-04-01	YUM	Yum Brands	D	-2.89	2.70	FDO	Family Dollar Stores	A	2.35	2.70
2009-04-01	DIS	Walt Disney	D	-2.91	2.90					
2009-04-01	STT	State Street	D	-2.93	1.80					
2009-04-01	HOG	Harley-davidson	D	-2.95	1.90					
2009-04-01	GSK	Glaxosmithkline Adr	D	-2.89	2.80	MYL	Mylan N.V.	A	2.39	2.80
2009-04-01	HRB	H.& R.block	D	-2.87	2.90	AZO	Autozone	A	2.24	2.90
2009-04-01	ITW	Illinois Tool Works	D	-2.91	2.00					
2009-04-01	LB	L Brands	D	-2.93	1.60					
2009-04-01	MCD	Mcdonald's	D	-2.86	1.90	AN	Autonation	B	1.55	1.90
2009-04-01	MDT	Medtronic	D	-2.91	2.80					
2009-04-01	MRK	Merck & Co	D	-2.93	3.30					
2009-04-01	MSFT	Microsoft	D	-2.90	1.80	JAVA	Sun Microsystems	B	1.47	1.80
2009-04-01	OMC	Omicom	D	-2.92	1.40					
2009-04-01	WMT	Wal-mart Stores	D	-2.86	2.70	JWN	Nordstrom	B	1.37	2.70
2009-04-01	DEO	Diageo Adr	D	-2.91	2.70					
2009-04-01	XRX	Xerox	D	-2.96	1.40					
2009-04-01	CSCO	Cisco Systems	D	-2.89	2.50	MU	Micron Technology	B	1.41	2.50
2009-04-01	EBAY	Ebay	D	-2.93	1.80					
2009-04-01	VIAB	Viacom	D	-2.93	2.40					
2009-04-01	JPM	Jpmorgan Chase	D	-2.91	3.20					
2009-04-01	BEAM	Beam Inc	D	-2.95	2.00					
2009-04-01	HPQ	Hp	D	-2.88	3.20	SNDK	Sandisk Corp	B	1.39	3.20
2009-04-01	QVCA	Liberty Interactive	D	-2.97	0.80					
2009-04-01	TEL	Te Connectivity	D	-2.95	1.80					
2009-05-01	ECA	Encana	D	-2.90	1.20					
2009-05-01	BA	Boeing	D	-2.92	2.10					
2009-05-01	BAC	Bank Of America	D	-2.96	1.10					
2009-05-01	BDK	Black & Decker	D	-2.90	2.80					
2009-05-01	CM-CSA	Comcast	D	-2.88	3.00	AN	Autonation	A	2.69	3.00
2009-05-01	COF	Capital One Financial	D	-2.95	3.00					
2009-05-01	DIS	Walt Disney	D	-2.89	3.00	DRI	Darden Restaurants	A	2.44	3.00
2009-05-01	STT	State Street	D	-2.92	1.80					
2009-05-01	GSK	Glaxosmithkline Adr	D	-2.89	2.50	MYL	Mylan N.V.	A	2.38	2.50
2009-05-01	HRB	H.& R.block	D	-2.89	2.20	WFM	Whole Foods Market	A	2.43	2.20
2009-05-01	ITW	Illinois Tool Works	D	-2.90	1.80	GR	Goodrich	A	2.28	1.80
2009-05-01	MCD	Mcdonald's	D	-2.87	1.60	AMZN	Amazon.com	A	2.38	1.60
2009-05-01	MRK	Merck & Co	D	-2.93	2.60					
2009-05-01	WMT	Wal-mart Stores	D	-2.87	2.30	FDO	Family Dollar Stores	A	2.34	2.30
2009-05-01	DEO	Diageo Adr	D	-2.91	2.50					
2009-05-01	XRX	Xerox	D	-2.94	1.60					
2009-05-01	VIAB	Viacom	D	-2.93	2.30					
2009-05-01	BMY	Bristol-myers Squibb	D	-2.85	2.20	LIFE	Life Technologies	A	2.29	2.20
2009-05-01	HPQ	Hp	D	-2.87	3.20	JAVA	Sun Microsystems	A	2.54	3.20
2009-06-01	BDK	Black & Decker	D	-2.92	2.20					
2009-06-01	GSK	Glaxosmithkline Adr	D	-2.88	2.60	CI	Cigna	A	2.44	2.60
2009-06-01	HRB	H.& R.block	D	-2.89	2.00	WYN	Wyndham Worldwide	A	2.71	2.00
2009-06-01	MRK	Merck & Co	D	-2.92	2.80					
2009-06-01	WMT	Wal-mart Stores	D	-2.87	2.10	AN	Autonation	A	2.67	2.10
2009-06-01	DEO	Diageo Adr	D	-2.89	2.70	F	Ford Motor	A	2.81	2.70
2009-06-01	XRX	Xerox	D	-2.93	1.70					
2009-06-01	BMY	Bristol-myers Squibb	D	-2.85	2.20	MYL	Mylan N.V.	A	2.39	2.20
2009-06-01	HPQ	Hp	D	-2.87	2.90	JAVA	Sun Microsystems	A	2.54	2.90

Date	Ticker	Name	R	SM	W (%)	Ticker	Name	R	SM	W (%)
2009-07-01	BDK	Black & Decker	D	-2.93	1.70					
2009-07-01	HRB	H.& R.block	D	-2.87	2.30	AN	Autonation	A	2.70	2.30
2009-07-01	WMT	Wal-mart Stores	D	-2.84	1.90	WYN	Wyndham Worldwide	A	2.70	1.90
2009-07-01	BMJ	Bristol-myers Squibb	D	-2.84	2.20	THC	Tenet Healthcare	A	2.53	2.20
2009-07-01	TWX	Time Warner	D	-2.92	2.20					
2009-08-03	BK	Bank Of New York Mellon	C	-1.84	2.00	FITB	Fifth Third Bancorp	A	3.00	2.00
2009-08-03	HD	The Home Depot	C	-1.83	2.30	AN	Autonation	A	2.82	2.30
2009-08-03	HRB	H.& R.block	D	-2.88	2.00	WYN	Wyndham Worldwide	A	2.81	2.00
2009-08-03	WMT	Wal-mart Stores	D	-2.84	1.70	JWN	Nordstrom	A	2.59	1.70
2009-09-01	ECA	Encana	C	-1.85	1.70	GNW	Genworth Financial	A	3.00	1.70
2009-09-01	BK	Bank Of New York Mellon	C	-1.84	2.00	FITB	Fifth Third Bancorp	A	3.00	2.00
2009-12-01	BK	Bank Of New York Mellon	C	-1.85	2.10	FITB	Fifth Third Bancorp	A	3.00	2.10
2010-01-01	BK	Bank Of New York Mellon	C	-1.85	2.40	FITB	Fifth Third Bancorp	A	3.00	2.40
2010-01-01	DELL	Dell	C	-1.86	1.90	MU	Micron Technology	A	3.00	1.90
2010-02-01	DELL	Dell	C	-1.87	1.80	MU	Micron Technology	A	2.90	1.80
2010-02-01	KSS	Kohl's	C	-1.86	1.10	WYN	Wyndham Worldwide	A	3.00	1.10
2010-02-01	JPM	Jpmorgan Chase	C	-1.86	1.60	FITB	Fifth Third Bancorp	A	3.00	1.60
2010-03-01	DELL	Dell	C	-1.87	1.80	SNDK	Sandisk Corp	A	3.00	1.80
2010-03-01	ITW	Illinois Tool Works	C	-1.85	1.80	JBL	Jabil Circuit	A	2.82	1.80
2010-03-01	KSS	Kohl's	C	-1.85	1.20	WYN	Wyndham Worldwide	A	3.00	1.20
2010-04-01	ECA	Encana	C	-1.85	1.20	FITB	Fifth Third Bancorp	A	3.00	1.20
2010-04-01	HRB	H.& R.block	C	-1.87	1.80	WYN	Wyndham Worldwide	A	3.00	1.80
2010-04-01	ITW	Illinois Tool Works	C	-1.84	1.70	JBL	Jabil Circuit	A	2.86	1.70
2010-05-03	ECA	Encana	C	-1.85	1.20	FITB	Fifth Third Bancorp	A	3.00	1.20
2010-05-03	HRB	H.& R.block	C	-1.86	1.90	WYN	Wyndham Worldwide	A	3.00	1.90
2010-05-03	MRK	Merck & Co	C	-1.86	1.70	THC	Tenet Healthcare	A	3.00	1.70
2010-06-01	ECA	Encana	C	-1.85	1.30	F	Ford Motor	A	3.00	1.30
2010-06-01	WU	The Western Union	D	-2.87	1.40	FITB	Fifth Third Bancorp	A	3.00	1.40
2010-06-01	HRB	H.& R.block	C	-1.89	1.70	WYN	Wyndham Worldwide	A	3.00	1.70
2010-06-01	MRK	Merck & Co	C	-1.86	1.90	THC	Tenet Healthcare	A	2.87	1.90
2010-06-01	WMT	Wal-mart Stores	C	-1.85	2.30	WYNN	Wynn Resorts	A	2.88	2.30
2010-07-01	ECA	Encana	C	-1.85	1.30	F	Ford Motor	A	3.00	1.30
2010-07-01	WU	The Western Union	D	-2.88	1.50	FITB	Fifth Third Bancorp	A	3.00	1.50
2010-07-01	BAX	Baxter International	D	-2.89	1.10	THC	Tenet Healthcare	A	2.80	1.10
2010-07-01	BK	Bank Of New York Mellon	C	-1.87	2.30	HIG	The Hartford Financial Services	A	3.00	2.30
2010-07-01	STT	State Street	D	-2.90	2.00	GNW	Genworth Financial	A	3.00	2.00
2010-07-01	GSK	Glaxosmithkline Adr	D	-2.87	1.90	HSP	Hospira	A	2.45	1.90
2010-07-01	HRB	H.& R.block	C	-1.89	1.80	WYN	Wyndham Worldwide	A	3.00	1.80
2010-07-01	MRK	Merck & Co	C	-1.86	2.00	MIL	Millipore	A	2.40	2.00
2010-07-01	OMC	Omnicom	C	-1.87	1.60	WYNN	Wynn Resorts	A	2.82	1.60
2010-07-01	ALL	Allstate	C	-1.87	1.80	HBAN	Huntington Bancshares	A	2.89	1.80
2010-07-01	WMT	Wal-mart Stores	C	-1.86	2.20	WFM	Whole Foods Market	A	2.72	2.20
2010-07-01	INTC	Intel	C	-1.87	2.70	SNDK	Sandisk Corp	A	3.00	2.70
2010-07-01	EBAY	Ebay	C	-1.88	2.00	JWN	Nordstrom	A	2.70	2.00
2010-07-01	BMJ	Bristol-myers Squibb	C	-1.85	2.40	LIFE	Life Technologies	A	2.37	2.40
2010-07-01	QVCA	Liberty Interactive	C	-1.90	2.00	PRU	Prudential Financial	A	2.80	2.00
2010-08-02	WU	The Western Union	D	-2.87	1.50	HBAN	Huntington Bancshares	A	3.00	1.50

Date	Ticker	Name	R	SM	W (%)	Ticker	Name	R	SM	W (%)
2010-08-02	AMAT	Applied Materials	D	-2.87	2.00	SNDK	Sandisk Corp	A	3.00	2.00
2010-08-02	BAC	Bank Of America	D	-2.88	1.70	HIG	The Hartford Financial Services	A	3.00	1.70
2010-08-02	BAX	Baxter International	D	-2.88	1.10	HSP	Hospira	A	2.41	1.10
2010-08-02	BBY	Best Buy	C	-1.88	2.20	WYNN	Wynn Resorts	A	2.97	2.20
2010-08-02	BK	Bank Of New York Mellon	D	-2.87	2.20	SCN	Prologis	A	2.83	2.20
2010-08-02	COF	Capital One Financial	C	-1.85	2.40	AFL	Aflac	A	2.74	2.40
2010-08-02	DELL	Dell	D	-2.87	1.80	CRM	Salesforce.com	A	2.77	1.80
2010-08-02	STT	State Street	D	-2.88	2.20	HST	Host Hotels & Resorts	A	2.73	2.20
2010-08-02	HD	The Home Depot	C	-1.87	2.10	WFM	Whole Foods Market	A	2.79	2.10
2010-08-02	HOG	Harley-davidson	C	-1.87	1.90	TSN	Tyson Foods	A	2.67	1.90
2010-08-02	GSK	Glaxosmithkline Adr	D	-2.86	1.90	ESRX	Express Scripts Holding	A	2.35	1.90
2010-08-02	HRB	H.& R.block	D	-2.89	1.70	DISCA	Discovery Communications	A	2.64	1.70
2010-08-02	JNJ	Johnson & Johnson	D	-2.85	1.90	VAR	Varian Medical Systems	A	2.33	1.90
2010-08-02	MRK	Merck & Co	C	-1.86	1.90	HUM	Humana	A	2.30	1.90
2010-08-02	OMC	Omnicom	C	-1.85	1.70	KMX	Carmax	A	2.58	1.70
2010-08-02	ALL	Allstate	C	-1.86	1.70	STI	Suntrust Banks	A	2.66	1.70
2010-08-02	TXN	Texas Instruments	C	-1.85	2.30	NTAP	Netapp	A	2.71	2.30
2010-08-02	WMT	Wal-mart Stores	C	-1.85	2.20	AMZN	Amazon.com	A	2.57	2.20
2010-08-02	INTC	Intel	C	-1.85	2.70	RHT	Red Hat	A	2.69	2.70
2010-08-02	EBAY	Ebay	D	-2.87	2.00	MAR	Marriott International	A	2.48	2.00
2010-08-02	KSS	Kohl's	D	-2.86	1.00	BIG	Big Lots	A	2.45	1.00
2010-08-02	VIAB	Viacom	C	-1.84	2.20	TWC	Time Warner Cable Inc.	A	2.44	2.20
2010-08-02	BMJ	Bristol-myers Squibb	C	-1.84	2.30	ZBH	Zimmer Biomet	A	2.28	2.30
2010-08-02	TWX	Time Warner	C	-1.84	2.10	SHLD	Sears	A	2.39	2.10
2010-08-02	BEAM	Beam Inc	C	-1.86	2.00	HAR	Harman Ind Inc	A	2.57	2.00
2010-08-02	QVCA	Liberty Interactive	C	-1.89	2.00	SPG	Simon Property	A	2.60	2.00
2010-08-02	TEL	Te Connectivity	C	-1.86	2.50	CMI	Cummins	A	2.76	2.50
2010-09-01	ECA	Encana	C	-1.86	1.10	TIE	Titanium Metals	A	2.77	1.10
2010-09-01	WU	The Western Union	D	-2.87	1.50	HBAN	Huntington Bancshares	A	2.89	1.50
2010-09-01	AMAT	Applied Materials	D	-2.88	1.90	CRM	Salesforce.com	A	2.88	1.90
2010-09-01	BAC	Bank Of America	D	-2.89	1.60	AFL	Aflac	A	2.72	1.60
2010-09-01	BAX	Baxter International	D	-2.88	1.20	HSP	Hospira	A	2.41	1.20
2010-09-01	BBY	Best Buy	D	-2.89	2.20	WYNN	Wynn Resorts	A	2.89	2.20
2010-09-01	BK	Bank Of New York Mellon	D	-2.87	2.20	HST	Host Hotels & Resorts	A	2.67	2.20
2010-09-01	COF	Capital One Financial	C	-1.86	2.30	AMP	Ameriprise Financial	A	2.62	2.30
2010-09-01	DELL	Dell	D	-2.88	1.70	RHT	Red Hat	A	2.75	1.70
2010-09-01	STT	State Street	D	-2.89	2.10	SPG	Simon Property	A	2.60	2.10
2010-09-01	HD	The Home Depot	C	-1.87	2.20	WFM	Whole Foods Market	A	2.72	2.20
2010-09-01	HOG	Harley-davidson	C	-1.88	1.80	TSN	Tyson Foods	A	2.63	1.80
2010-09-01	HRB	H.& R.block	D	-2.91	1.40					
2010-09-01	ITW	Illinois Tool Works	D	-2.86	1.60	CMI	Cummins	A	2.75	1.60
2010-09-01	JNJ	Johnson & Johnson	D	-2.85	2.00	ESRX	Express Scripts Holding	A	2.33	2.00
2010-09-01	MDT	Medtronic	D	-2.88	2.10	VAR	Varian Medical Systems	A	2.33	2.10
2010-09-01		Minnesota Mng.& Mfg	C	-1.85	1.50	CAT	Caterpillar	A	2.51	1.50
2010-09-01	MRK	Merck & Co	C	-1.86	2.00	HUM	Humana	A	2.30	2.00
2010-09-01	MSFT	Microsoft	D	-2.87	1.90	NTAP	Netapp	A	2.67	1.90
2010-09-01	OMC	Omnicom	C	-1.86	1.70	DISCA	Discovery Communications	A	2.63	1.70
2010-09-01	ALL	Allstate	D	-2.87	1.70	STI	Suntrust Banks	A	2.59	1.70
2010-09-01	TXN	Texas Instruments	C	-1.85	2.30	TDC	Teradata	A	2.49	2.30
2010-09-01	WFC	Wells Fargo	D	-2.88	1.90	DFS	Discover Financial Services	A	2.52	1.90
2010-09-01	WMT	Wal-mart Stores	D	-2.85	2.30	AMZN	Amazon.com	A	2.63	2.30
2010-09-01	INTC	Intel	C	-1.88	2.50	AKAM	Akamai Technologies	A	2.48	2.50

Date	Ticker	Name	R	SM	W (%)	Ticker	Name	R	SM	W (%)
2010-09-01	CSCO	Cisco Systems	D	-2.88	1.80	LXK	Lexmark Intl	A	2.42	1.80
2010-09-01	KSS	Kohl's	D	-2.86	1.10	KMX	Carmax	A	2.56	1.10
2010-09-01	VIAB	Viacom	C	-1.86	2.20	MAR	Marriott International	A	2.45	2.20
2010-09-01	JPM	Jpmorgan Chase	D	-2.85	1.90	TMK	Torchmark	A	2.50	1.90
2010-09-01	TWX	Time Warner	C	-1.85	2.10	BIG	Big Lots	A	2.41	2.10
2010-09-01	MA	Mastercard	D	-2.87	1.20	VNO	Vornado Realty Trust	A	2.49	1.20
2010-09-01	BEAM	Beam Inc	C	-1.86	2.20	JCI	Johnson Controls	A	2.53	2.20
2010-09-01	HPQ	Hp	D	-2.88	1.90	EMC	EMC Corp	A	2.36	1.90
2010-09-01	QVCA	Liberty Interactive	C	-1.89	2.10	CMA	Comerica	A	2.48	2.10
2010-09-01	TEL	Te Connectivity	C	-1.87	2.40	PTV	Pactiv Corp	A	2.50	2.40
2010-10-01	ECA	Encana	D	-2.85	1.10	TIE	Titanium Metals	A	2.82	1.10
2010-10-01	AMAT	Applied Materials	D	-2.87	2.10	RHT	Red Hat	A	2.87	2.10
2010-10-01	BAC	Bank Of America	D	-2.89	1.50	HBAN	Huntington Bancshares	A	2.93	1.50
2010-10-01	BK	Bank Of New York Mellon	D	-2.87	2.10	HST	Host Hotels & Resorts	A	2.72	2.10
2010-10-01	COF	Capital One Financial	C	-1.86	2.20	STI	Suntrust Banks	A	2.65	2.20
2010-10-01	DELL	Dell	D	-2.88	2.20	CRM	Salesforce.com	A	2.85	2.20
2010-10-01	HD	The Home Depot	C	-1.85	2.20	WYNN	Wynn Resorts	A	2.94	2.20
2010-10-01	HOG	Harley-davidson	C	-1.87	1.90	TSN	Tyson Foods	A	2.62	1.90
2010-10-01	HRB	H.& R.block	D	-2.91	1.50					
2010-10-01	MDT	Medtronic	D	-2.88	2.30	HSP	Hospira	A	2.44	2.30
2010-10-01	MSFT	Microsoft	D	-2.87	2.00	NTAP	Netapp	A	2.78	2.00
2010-10-01	NOC	Northrop Grumman	C	-1.86	1.70	CMI	Cummins	A	2.86	1.70
2010-10-01	WFC	Wells Fargo	D	-2.87	1.80	AMP	Ameriprise Financial	A	2.64	1.80
2010-10-01	INTC	Intel	D	-2.87	2.40	TDC	Teradata	A	2.57	2.40
2010-10-01	CSCO	Cisco Systems	D	-2.87	1.90	LXK	Lexmark Intl	A	2.52	1.90
2010-10-01	TWX	Time Warner	C	-1.85	1.90	WFM	Whole Foods Market	A	2.75	1.90
2010-10-01	XOM	Exxon Mobil	D	-2.86	1.20	FTI	Fmc Technologies	A	2.57	1.20
2010-11-01	ECA	Encana	D	-2.86	1.00	NTAP	Netapp	A	2.85	1.00
2010-11-01	AMAT	Applied Materials	D	-2.86	2.10	RHT	Red Hat	A	2.90	2.10
2010-11-01	BAC	Bank Of America	D	-2.90	1.30					
2010-11-01	BK	Bank Of New York Mellon	D	-2.87	2.00	HST	Host Hotels & Resorts	A	2.78	2.00
2010-11-01	COF	Capital One Financial	D	-2.87	2.00	AMP	Ameriprise Financial	A	2.69	2.00
2010-11-01	HRB	H.& R.block	D	-2.92	1.40					
2010-11-01	MDT	Medtronic	D	-2.87	2.30	HSP	Hospira	A	2.46	2.30
2010-11-01	WFC	Wells Fargo	D	-2.87	1.80	SPG	Simon Property	A	2.63	1.80
2010-11-01	INTC	Intel	D	-2.86	2.50	CRM	Salesforce.com	A	2.86	2.50
2010-11-01	JPM	Jpmorgan Chase	D	-2.85	1.70	DFS	Discover Financial Services	A	2.61	1.70
2010-11-01	TWX	Time Warner	C	-1.84	2.00	WYNN	Wynn Resorts	A	3.00	2.00
2010-12-01	ECA	Encana	D	-2.86	1.00	RHT	Red Hat	A	2.98	1.00
2010-12-01	BAC	Bank Of America	D	-2.90	1.20					
2010-12-01	COF	Capital One Financial	D	-2.84	2.00	HST	Host Hotels & Resorts	A	2.82	2.00
2010-12-01	HRB	H.& R.block	D	-2.91	1.50					
2010-12-01	MDT	Medtronic	D	-2.88	2.20	HSP	Hospira	A	2.44	2.20
2010-12-01	CSCO	Cisco Systems	D	-2.87	1.60	CRM	Salesforce.com	A	3.00	1.60
2010-12-01	JPM	Jpmorgan Chase	D	-2.84	1.70	AMP	Ameriprise Financial	A	2.71	1.70
2010-12-01	TWX	Time Warner	C	-1.85	1.80	WYNN	Wynn Resorts	A	3.00	1.80
2011-01-03	ECA	Encana	D	-2.86	1.00	CMI	Cummins	A	3.00	1.00
2011-01-03	HRB	H.& R.block	D	-2.91	1.40					
2011-01-03	CSCO	Cisco Systems	D	-2.86	1.80	CRM	Salesforce.com	A	3.00	1.80
2011-02-01	DELL	Dell	C	-1.84	2.00	CRM	Salesforce.com	A	3.00	2.00
2011-02-01	GSK	Glaxosmithkline Adr	C	-1.85	1.70	ESRX	Express Scripts Holding	A	2.44	1.70
2011-02-01	HRB	H.& R.block	D	-2.91	1.30					
2011-02-01	JNJ	Johnson & Johnson	C	-1.84	1.70	VAR	Varian Medical Systems	A	2.41	1.70
2011-02-01	MRK	Merck & Co	C	-1.85	1.50	HUM	Humana	A	2.36	1.50
2011-02-01	ALL	Allstate	C	-1.84	1.80	HST	Host Hotels & Resorts	A	2.93	1.80
2011-02-01	CSCO	Cisco Systems	D	-2.85	1.80	FFIV	F5 Networks	A	2.95	1.80
2011-02-01	DISCK	Discovery Communications	C	-1.86	1.50	WFM	Whole Foods Market	A	3.00	1.50

Date	Ticker	Name	R	SM	W (%)	Ticker	Name	R	SM	W (%)
2011-03-01	GSK	Glaxosmithkline Adr	C	-1.85	1.70	ESRX	Express Scripts Holding	A	2.42	1.70
2011-03-01	JNJ	Johnson & Johnson	C	-1.84	1.70	VAR	Varian Medical Systems	A	2.42	1.70
2011-03-01	MRK	Merck & Co	D	-2.86	1.50	HUM	Humana	A	2.39	1.50
2011-03-01	CSCO	Cisco Systems	D	-2.87	1.60	FFIV	F5 Networks	A	2.98	1.60
2011-04-01	BAC	Bank Of America	C	-1.85	1.30	HST	Host Hotels & Resorts	A	2.85	1.30
2011-04-01	BBY	Best Buy	D	-2.89	1.70	WFM	Whole Foods Market	A	3.00	1.70
2011-04-01	GSK	Glaxosmithkline Adr	C	-1.85	1.70	ESRX	Express Scripts Holding	A	2.43	1.70
2011-04-01	JNJ	Johnson & Johnson	D	-2.84	1.60	HUM	Humana	A	2.43	1.60
2011-04-01	MRK	Merck & Co	D	-2.85	1.90	VAR	Varian Medical Systems	A	2.42	1.90
2011-04-01	UL	Unilever Adr	C	-1.84	1.80	JCI	Johnson Controls	A	2.81	1.80
2011-04-01	CSCO	Cisco Systems	D	-2.88	1.40	CRM	Salesforce.com	A	3.00	1.40
2011-05-02	BAC	Bank Of America	C	-1.86	1.20	HST	Host Hotels & Resorts	A	2.86	1.20
2011-05-02	BBY	Best Buy	D	-2.88	1.80	WFM	Whole Foods Market	A	3.00	1.80
2011-05-02	NOC	Northrop Grumman	C	-1.85	2.10	CMI	Cummins	A	3.00	2.10
2011-05-02	WFC	Wells Fargo	C	-1.86	1.90	DFS	Discover Financial Services	A	2.84	1.90
2011-05-02	CSCO	Cisco Systems	D	-2.88	1.40	CRM	Salesforce.com	A	3.00	1.40
2011-06-01	AFL	Aflac	C	-1.87	1.60	HST	Host Hotels & Resorts	A	2.83	1.60
2011-06-01	AMAT	Applied Materials	C	-1.87	2.00	CRM	Salesforce.com	A	3.00	2.00
2011-06-01	BAC	Bank Of America	C	-1.87	1.10	DFS	Discover Financial Services	A	2.80	1.10
2011-06-01	BBY	Best Buy	D	-2.88	1.80	WFM	Whole Foods Market	A	3.00	1.80
2011-06-01	MSFT	Microsoft	D	-2.86	1.80	NTAP	Netapp	A	2.85	1.80
2011-06-01	NOC	Northrop Grumman	C	-1.85	2.20	CMI	Cummins	A	2.94	2.20
2011-06-01	WFC	Wells Fargo	C	-1.87	1.80	AMP	Ameriprise Financial	A	2.79	1.80
2011-06-01	CSCO	Cisco Systems	D	-2.89	1.40	TDC	Teradata	A	2.80	1.40
2011-06-01	JPM	Jpmorgan Chase	C	-1.85	1.90	SPG	Simon Property	A	2.73	1.90
2011-07-01	ECA	Encana	C	-1.85	1.50	CMI	Cummins	A	3.00	1.50
2011-07-01	AFL	Aflac	C	-1.87	1.70	DFS	Discover Financial Services	A	2.90	1.70
2011-07-01	AMAT	Applied Materials	C	-1.87	1.90	CRM	Salesforce.com	A	3.00	1.90
2011-07-01	BAC	Bank Of America	D	-2.88	1.30	SPG	Simon Property	A	2.75	1.30
2011-07-01	BBY	Best Buy	D	-2.88	2.10	WFM	Whole Foods Market	A	3.00	2.10
2011-07-01	DIS	Walt Disney	C	-1.85	1.50	WYNN	Wynn Resorts	A	3.00	1.50
2011-07-01	HD	The Home Depot	C	-1.84	2.00	NFLX	Netflix	A	3.00	2.00
2011-07-01	OMC	Omnicom	C	-1.84	2.10	CMG	Chipotle Mexican Grill	A	3.00	2.10
2011-07-01	TXN	Texas Instruments	C	-1.85	2.30	TDC	Teradata	A	2.89	2.30
2011-07-01	WFC	Wells Fargo	C	-1.86	2.10	TMK	Torchmark	A	2.63	2.10
2011-07-01	CSCO	Cisco Systems	D	-2.89	1.20	NTAP	Netapp	A	2.87	1.20
2011-07-01	JPM	Jpmorgan Chase	C	-1.86	1.70	EQR	Equity Residential	A	2.61	1.70
2011-07-01	CVE	Cenovus Energy	C	-1.84	1.90	AMZN	Amazon.com	A	3.00	1.90
2011-07-01	GOOGL	Alphabet	C	-1.86	0.80	EMC	EMC Corp	A	2.52	0.80
2011-08-01	ECA	Encana	C	-1.86	1.50	FTI	Fmc Technologies	A	2.74	1.50
2011-08-01	AFL	Aflac	D	-2.87	1.70	DFS	Discover Financial Services	A	2.87	1.70
2011-08-01	AMAT	Applied Materials	C	-1.88	1.80	CRM	Salesforce.com	A	3.00	1.80
2011-08-01	BA	Boeing	C	-1.85	1.70	CAT	Caterpillar	A	2.76	1.70
2011-08-01	BAC	Bank Of America	D	-2.89	1.20	SPG	Simon Property	A	2.76	1.20
2011-08-01	COF	Capital One Financial	C	-1.86	2.20	EQR	Equity Residential	A	2.61	2.20
2011-08-01	DIS	Walt Disney	C	-1.85	1.50	AMZN	Amazon.com	A	3.00	1.50
2011-08-01	STT	State Street	C	-1.86	1.90	BXP	Boston Properties	A	2.56	1.90
2011-08-01	HD	The Home Depot	C	-1.85	2.00	WFM	Whole Foods Market	A	3.00	2.00
2011-08-01	MRK	Merck & Co	C	-1.85	2.20	EW	Edwards Lifesciences	A	2.52	2.20
2011-08-01	ORCL	Oracle	C	-1.86	2.10	TDC	Teradata	A	2.81	2.10
2011-08-01	OMC	Omnicom	C	-1.84	2.10	WYNN	Wynn Resorts	A	3.00	2.10

Date	Ticker	Name	R	SM	W (%)	Ticker	Name	R	SM	W (%)
2011-08-01	TXN	Texas Instruments	C	-1.86	2.20	NTAP	Netapp	A	2.74	2.20
2011-08-01	WFC	Wells Fargo	C	-1.86	2.10	AVB	Avalonbay Communities	A	2.55	2.10
2011-08-01	WMT	Wal-mart Stores	C	-1.85	1.80	NFLX	Netflix	A	3.00	1.80
2011-08-01	CSCO	Cisco Systems	D	-2.89	1.30	EMC	EMC Corp	A	2.49	1.30
2011-08-01	JPM	Jpmorgan Chase	C	-1.86	1.80	VNO	Vornado Realty Trust	A	2.53	1.80
2011-08-01	BEAM	Beam Inc	C	-1.85	1.80	MJN	Mead Johnson Nutrition	A	2.45	1.80
2011-08-01	CVE	Cenovus Energy	C	-1.84	2.00	HAL	Halliburton	A	2.67	2.00
2011-08-01	QVCA	Liberty Interactive	C	-1.85	2.30	KIM	Kimco Realty	A	2.45	2.30
2011-08-01	DISCK	Discovery Communications	C	-1.85	1.60	CMG	Chipotle Mexican Grill	A	3.00	1.60
2011-09-01	ECA	Encana	D	-2.88	1.40	FTI	Fmc Technologies	A	2.71	1.40
2011-09-01	AFL	Aflac	D	-2.90	1.50	DFS	Discover Financial Services	A	2.85	1.50
2011-09-01	AMAT	Applied Materials	C	-1.89	1.80	CRM	Salesforce.com	A	2.96	1.80
2011-09-01	BA	Boeing	C	-1.86	1.70	GR	Goodrich	A	2.55	1.70
2011-09-01	BAC	Bank Of America	D	-2.91	1.00					
2011-09-01	BK	Bank Of New York Mellon	D	-2.89	1.50	SPG	Simon Property	A	2.75	1.50
2011-09-01	CM-CSA	Comcast	C	-1.86	2.50	AMZN	Amazon.com	A	3.00	2.50
2011-09-01	COF	Capital One Financial	C	-1.87	2.20	EQR	Equity Residential	A	2.60	2.20
2011-09-01	DIS	Walt Disney	C	-1.87	1.40	WFM	Whole Foods Market	A	3.00	1.40
2011-09-01	STT	State Street	C	-1.88	1.70	AVB	Avalonbay Communities	A	2.56	1.70
2011-09-01	HD	The Home Depot	C	-1.86	2.00	WYNN	Wynn Resorts	A	3.00	2.00
2011-09-01	MRK	Merck & Co	C	-1.85	2.30	EW	Edwards Lifesciences	A	2.55	2.30
2011-09-01	ORCL	Oracle	C	-1.87	2.10	TDC	Teradata	A	2.74	2.10
2011-09-01	OMC	Omnicom	C	-1.86	1.90	CMG	Chipotle Mexican Grill	A	3.00	1.90
2011-09-01	ALL	Allstate	D	-2.87	1.80	BXP	Boston Properties	A	2.54	1.80
2011-09-01	TXN	Texas Instruments	C	-1.88	2.00	NSM	Nat Semiconductor	A	2.34	2.00
2011-09-01	WFC	Wells Fargo	C	-1.88	2.10	VNO	Vornado Realty Trust	A	2.49	2.10
2011-09-01	WMT	Wal-mart Stores	D	-2.85	1.90	TWC	Time Warner Cable Inc.	A	2.49	1.90
2011-09-01	DEO	Diageo Adr	C	-1.84	2.10	MJN	Mead Johnson Nutrition	A	2.45	2.10
2011-09-01	INTC	Intel	C	-1.86	2.20	CERN	Cerner	A	2.30	2.20
2011-09-01	CSCO	Cisco Systems	D	-2.89	1.40	QCOM	Qualcomm	A	2.27	1.40
2011-09-01	JPM	Jpmorgan Chase	C	-1.87	1.70	PSA	Public Storage	A	2.42	1.70
2011-09-01	TWX	Time Warner	C	-1.86	1.80	AZO	Autozone	A	2.45	1.80
2011-09-01	BEAM	Beam Inc	C	-1.85	1.80	GPC	Genuine Parts	A	2.37	1.80
2011-09-01	ADP	Automatic Data Processing	C	-1.85	1.80	UNP	Union Pacific	A	2.45	1.80
2011-09-01	QVCA	Liberty Interactive	C	-1.86	2.40	KIM	Kimco Realty	A	2.41	2.40
2011-10-03	ECA	Encana	D	-2.90	1.30					
2011-10-03	WU	The Western Union	D	-2.89	0.90	SPG	Simon Property	A	2.68	0.90
2011-10-03	AFL	Aflac	D	-2.91	1.90					
2011-10-03	AMAT	Applied Materials	D	-2.90	1.70					
2011-10-03	BA	Boeing	D	-2.88	1.40	GR	Goodrich	A	2.75	1.40
2011-10-03	BAC	Bank Of America	D	-2.94	1.00					
2011-10-03	BBY	Best Buy	D	-2.89	1.60	AMZN	Amazon.com	A	3.00	1.60
2011-10-03	BK	Bank Of New York Mellon	D	-2.91	1.20					
2011-10-03	CM-CSA	Comcast	C	-1.87	2.60	WFM	Whole Foods Market	A	3.00	2.60
2011-10-03	COF	Capital One Financial	C	-1.89	2.50	VNO	Vornado Realty Trust	A	2.41	2.50
2011-10-03	DIS	Walt Disney	D	-2.89	1.50	CMG	Chipotle Mexican Grill	A	3.00	1.50
2011-10-03	FDX	Fedex	D	-2.89	2.20	UNP	Union Pacific	A	2.40	2.20
2011-10-03	STT	State Street	D	-2.90	1.40	PSA	Public Storage	A	2.37	1.40
2011-10-03	GLW	Corning	D	-2.92	1.70					
2011-10-03	HD	The Home Depot	C	-1.86	2.00	TWC	Time Warner Cable Inc.	A	2.47	2.00
2011-10-03	ITW	Illinois Tool Works	D	-2.89	1.60	BLL	Ball	A	2.36	1.60
2011-10-03	MDT	Medtronic	D	-2.88	2.10	EW	Edwards Lifesciences	A	2.51	2.10

Date	Ticker	Name	R	SM	W (%)	Ticker	Name	R	SM	W (%)
2011-10-03		Minnesota Mng.& Mfg	D	-2.88	1.30	ACN	Accenture Cl A	A	2.32	1.30
2011-10-03	MRK	Merck & Co	D	-2.86	2.40	BIIB	Biogen	A	2.32	2.40
2011-10-03	NOC	Northrop Grumman	D	-2.88	1.70	UTX	United Technologies	A	2.31	1.70
2011-10-03	ORCL	Oracle	C	-1.87	2.50	CRM	Salesforce.com	A	2.85	2.50
2011-10-03	OMC	Omnicom	D	-2.88	2.30	AZO	Autozone	A	2.45	2.30
2011-10-03	ALL	Allstate	D	-2.89	1.90	KIM	Kimco Realty	A	2.34	1.90
2011-10-03	TXN	Texas Instruments	D	-2.88	2.30	TDC	Teradata	A	2.74	2.30
2011-10-03	WFC	Wells Fargo	D	-2.89	2.10	V	Visa	A	2.21	2.10
2011-10-03	WMT	Wal-mart Stores	D	-2.85	1.80	AN	Autonation	A	2.29	1.80
2011-10-03	DEO	Diageo Adr	C	-1.85	1.90	MJN	Mead Johnson Nutrition	A	2.43	1.90
2011-10-03	INTC	Intel	C	-1.86	2.60	CERN	Cerner	A	2.30	2.60
2011-10-03	CSCO	Cisco Systems	D	-2.90	1.10	QCOM	Qualcomm	A	2.25	1.10
2011-10-03	KSS	Kohl's	D	-2.86	1.60	JWN	Nordstrom	A	2.26	1.60
2011-10-03	VIAB	Viacom	C	-1.88	1.70	SBUX	Starbucks	A	2.26	1.70
2011-10-03	JPM	Jpmorgan Chase	D	-2.90	1.80					
2011-10-03	TWX	Time Warner	C	-1.87	2.50	BBBY	Bed Bath & Beyond	A	2.26	2.50
2011-10-03	BEAM	Beam Inc	C	-1.86	1.60	HRL	Hormel Foods	A	2.35	1.60
2011-10-03	ADP	Automatic Data Processing	C	-1.86	1.60	GWW	Ww Grainger	A	2.25	1.60
2011-10-03	QVCA	Liberty Interactive	C	-1.87	2.10	AOC	Aon plc	A	2.19	2.10
2011-10-03	TEL	Te Connectivity	D	-2.88	2.20	PCP	Precision Castparts	A	2.24	2.20
2011-11-01	ECA	Encana	D	-2.90	1.20	NI	Nisource	A	2.45	1.20
2011-11-01	WU	The Western Union	D	-2.87	0.90	PSA	Public Storage	A	2.44	0.90
2011-11-01	AFL	Aflac	D	-2.88	2.10	V	Visa	A	2.23	2.10
2011-11-01	AMAT	Applied Materials	D	-2.88	1.80	TDC	Teradata	A	2.83	1.80
2011-11-01	BA	Boeing	D	-2.87	1.40	GR	Goodrich	A	2.77	1.40
2011-11-01	BAC	Bank Of America	D	-2.93	1.00					
2011-11-01	BBY	Best Buy	D	-2.87	1.70	AMZN	Amazon.com	A	3.00	1.70
2011-11-01	BK	Bank Of New York Mellon	D	-2.90	1.20	AOC	Aon plc	A	2.21	1.20
2011-11-01	CM-CSA	Comcast	C	-1.86	2.60	WFM	Whole Foods Market	A	3.00	2.60
2011-11-01	COF	Capital One Financial	C	-1.87	2.50	CB	Chubb	A	2.20	2.50
2011-11-01	DIS	Walt Disney	D	-2.87	1.50	CMG	Chipotle Mexican Grill	A	3.00	1.50
2011-11-01	FDX	Fedex	D	-2.87	2.40	BLL	Ball	A	2.40	2.40
2011-11-01	GLW	Corning	D	-2.90	1.80					
2011-11-01	ITW	Illinois Tool Works	D	-2.87	1.60	ACN	Accenture Cl A	A	2.36	1.60
2011-11-01	MDT	Medtronic	D	-2.87	2.00	BIIB	Biogen	A	2.41	2.00
2011-11-01		Minnesota Mng.& Mfg	D	-2.87	1.30	GWW	Ww Grainger	A	2.29	1.30
2011-11-01	NOC	Northrop Grumman	D	-2.87	1.60	PCP	Precision Castparts	A	2.26	1.60
2011-11-01	ORCL	Oracle	C	-1.85	2.50	CERN	Cerner	A	2.28	2.50
2011-11-01	ALL	Allstate	D	-2.87	1.90	CB	Chubb Corp	A	2.20	1.90
2011-11-01	TXN	Texas Instruments	D	-2.86	2.30	NVDA	Nvidia	A	2.26	2.30
2011-11-01	WFC	Wells Fargo	D	-2.88	2.00	MMC	Marsh & McLennan Cos	A	2.19	2.00
2011-11-01	EBAY	Ebay	C	-1.85	2.30	TWC	Time Warner Cable Inc.	A	2.48	2.30
2011-11-01	VIAB	Viacom	C	-1.87	1.80	AZO	Autozone	A	2.47	1.80
2011-11-01	JPM	Jpmorgan Chase	D	-2.89	1.80	SPG	Simon Property	A	2.19	1.80
2011-11-01	TWX	Time Warner	C	-1.85	2.60	AN	Autonation	A	2.35	2.60
2011-11-01	BEAM	Beam Inc	C	-1.84	1.70	MJN	Mead Johnson Nutrition	A	2.45	1.70
2011-11-01	CVE	Cenovus Energy	C	-1.84	1.90	HAL	Halliburton	A	2.44	1.90
2011-11-01	ADP	Automatic Data Processing	C	-1.85	1.60	ROP	Roper Technologies	A	2.24	1.60
2011-12-01	ECA	Encana	D	-2.90	1.10					
2011-12-01	WU	The Western Union	D	-2.87	0.90	PSA	Public Storage	A	2.45	0.90
2011-12-01	AMAT	Applied Materials	D	-2.89	1.60	TDC	Teradata	A	2.79	1.60
2011-12-01	BAC	Bank Of America	D	-2.94	0.90					
2011-12-01	BK	Bank Of New York Mellon	D	-2.90	1.10					
2011-12-01	CM-CSA	Comcast	C	-1.86	2.50	WFM	Whole Foods Market	A	3.00	2.50
2011-12-01	COF	Capital One Financial	D	-2.87	2.50	V	Visa	A	2.25	2.50

Date	Ticker	Name	R	SM	W (%)	Ticker	Name	R	SM	W (%)
2011-12-01	DIS	Walt Disney	D	-2.86	1.60	CMG	Chipotle Mexican Grill	A	3.00	1.60
2011-12-01	FDX	Fedex	D	-2.86	2.40	GR	Goodrich	A	2.77	2.40
2011-12-01	GLW	Corning	D	-2.90	1.70					
2011-12-01	ITW	Illinois Tool Works	D	-2.87	1.50	ACN	Accenture Cl A	A	2.36	1.50
2011-12-01		Minnesota Mng.& Mfg	D	-2.86	1.30	GWW	Ww Grainger	A	2.32	1.30
2011-12-01	NOC	Northrop Grumman	D	-2.86	1.70	PCP	Precision Castparts	A	2.27	1.70
2011-12-01	ORCL	Oracle	C	-1.85	2.50	QCOM	Qualcomm	A	2.29	2.50
2011-12-01	UL	Unilever Adr	C	-1.84	2.20	MJN	Mead Johnson Nutrition	A	2.48	2.20
2011-12-01	WFC	Wells Fargo	D	-2.87	2.00	MCO	Moody's	A	2.22	2.00
2011-12-01	EBAY	Ebay	C	-1.86	2.20	AMZN	Amazon.com	A	2.94	2.20
2011-12-01	VIAB	Viacom	C	-1.86	1.80	AZO	Autozone	A	2.48	1.80
2011-12-01	JPM	Jpmorgan Chase	D	-2.89	1.70	AOC	Aon plc	A	2.21	1.70
2011-12-01	TWX	Time Warner	C	-1.85	2.50	CBS	Cbs	A	2.32	2.50
2011-12-01	CVE	Cenovus Energy	C	-1.85	1.80	NI	Nisource	A	2.48	1.80
2012-01-02	ECA	Encana	D	-2.91	1.50					
2012-01-02	AMAT	Applied Materials	D	-2.89	1.60	TDC	Teradata	A	2.71	1.60
2012-01-02	BAC	Bank Of America	D	-2.94	1.20					
2012-01-02	BK	Bank Of New York Mellon	D	-2.90	1.20	PSA	Public Storage	A	2.47	1.20
2012-01-02	CM-CSA	Comcast	C	-1.85	2.70	WFM	Whole Foods Market	A	3.00	2.70
2012-01-02	DELL	Dell	C	-1.86	2.10	MMI	Motorola Mobility Holdings	A	2.31	2.10
2012-01-02	GLW	Corning	D	-2.91	1.60					
2012-01-02		Minnesota Mng.& Mfg	D	-2.86	1.80	GR	Goodrich	A	2.78	1.80
2012-01-02	ORCL	Oracle	C	-1.88	2.30	QCOM	Qualcomm	A	2.29	2.30
2012-01-02	EBAY	Ebay	C	-1.84	2.20	CMG	Chipotle Mexican Grill	A	3.00	2.20
2012-01-02	VIAB	Viacom	C	-1.86	1.90	DLTR	Dollar Tree	A	2.98	1.90
2012-01-02	JPM	Jpmorgan Chase	D	-2.88	2.50	V	Visa	A	2.26	2.50
2012-01-02	TWX	Time Warner	C	-1.84	2.70	AZO	Autozone	A	2.46	2.70
2012-01-02	CVE	Cenovus Energy	C	-1.84	1.90	NI	Nisource	A	2.50	1.90
2012-02-01	ECA	Encana	D	-2.91	1.40					
2012-02-01	AMAT	Applied Materials	D	-2.88	1.70	QCOM	Qualcomm	A	2.31	1.70
2012-02-01	GLW	Corning	D	-2.85	1.50	MMI	Motorola Mobility Holdings	A	2.31	1.50
2012-02-01	ORCL	Oracle	D	-2.87	2.50	NVLS	Novellus Systems	A	2.30	2.50
2012-02-01	UL	Unilever Adr	C	-1.84	2.10	MJN	Mead Johnson Nutrition	A	2.47	2.10
2012-02-01	KSS	Kohl's	D	-2.86	1.20	WFM	Whole Foods Market	A	3.00	1.20
2012-02-01	CVE	Cenovus Energy	C	-1.83	2.00	CMG	Chipotle Mexican Grill	A	3.00	2.00
2012-03-01	ECA	Encana	D	-2.90	1.40					
2012-03-01	BBY	Best Buy	D	-2.85	1.70	WFM	Whole Foods Market	A	3.00	1.70
2012-03-01	GLW	Corning	D	-2.85	1.40	MU	Micron Technology	A	2.34	1.40
2012-03-01	ORCL	Oracle	D	-2.86	2.40	QCOM	Qualcomm	A	2.33	2.40
2012-03-01	UL	Unilever Adr	C	-1.84	2.00	MJN	Mead Johnson Nutrition	A	2.50	2.00
2012-03-01	KSS	Kohl's	D	-2.84	1.30	CMG	Chipotle Mexican Grill	A	3.00	1.30
2012-05-01	AFL	Aflac	C	-1.85	2.00	PSA	Public Storage	A	2.50	2.00
2012-05-01	HRB	H.& R.block	C	-1.86	1.40	WFM	Whole Foods Market	A	3.00	1.40
2012-06-01	AFL	Aflac	D	-2.87	1.90	PSA	Public Storage	A	2.46	1.90
2012-06-01	AMAT	Applied Materials	D	-2.87	1.40	QCOM	Qualcomm	A	2.29	1.40
2012-06-01	DELL	Dell	D	-2.89	1.70	IBM	IBM	A	2.26	1.70
2012-06-01	HRB	H.& R.block	C	-1.86	1.60	WFM	Whole Foods Market	A	3.00	1.60
2012-06-01	MCD	Mcdonald's	C	-1.86	1.20	CMG	Chipotle Mexican Grill	A	3.00	1.20
2012-06-01		Minnesota Mng.& Mfg	C	-1.85	1.80	GR	Goodrich	A	2.79	1.80
2012-06-01	ORCL	Oracle	D	-2.86	2.20	AKAM	Akamai Technologies	A	2.25	2.20
2012-06-01	PH	Parker-hannifin	C	-1.86	1.20	GWW	Ww Grainger	A	2.32	1.20
2012-06-01	KSS	Kohl's	D	-2.85	1.60	DLTR	Dollar Tree	A	3.00	1.60
2012-06-01	CVE	Cenovus Energy	D	-2.87	1.70	FOSL	Fossil	A	3.00	1.70
2012-06-01	TEL	Te Connectivity	C	-1.86	2.30	SHW	Sherwin-williams	A	2.30	2.30

Date	Ticker	Name	R	SM	W (%)	Ticker	Name	R	SM	W (%)
2012-07-02	AFL	Aflac	D	-2.86	1.90	PSA	Public Storage	A	2.50	1.90
2012-07-02	AMAT	Applied Materials	D	-2.86	1.40	AKAM	Akamai Technologies	A	2.28	1.40
2012-07-02	DVN	Devon Energy	D	-2.87	1.40	SUN	Sunoco	A	2.32	1.40
2012-07-02	BBY	Best Buy	D	-2.87	1.80	WFM	Whole Foods Market	A	3.00	1.80
2012-07-02	BK	Bank Of New York Mellon	C	-1.85	1.60	RF	Regions Financial	A	2.38	1.60
2012-07-02	DELL	Dell	D	-2.89	2.00	CTXS	Citrix Systems	A	2.27	2.00
2012-07-02	MCD	Mcdonald's	C	-1.86	1.10	CMG	Chipotle Mexican Grill	A	3.00	1.10
2012-07-02		Minnesota Mng.& Mfg	C	-1.83	2.00	GR	Goodrich	A	2.80	2.00
2012-07-02	PH	Parker-hannifin	C	-1.86	1.80	MAS	Masco	A	2.34	1.80
2012-07-02	GS	Goldman Sachs	C	-1.87	1.80	V	Visa	A	2.32	1.80
2012-07-02	KSS	Kohl's	D	-2.85	1.40	DLTR	Dollar Tree	A	3.00	1.40
2012-07-02	JPM	Jpmorgan Chase	C	-1.87	2.70	EFX	Equifax	A	2.27	2.70
2012-07-02	DTV	DIRECTV	C	-1.84	2.00	AZO	Autozone	A	2.52	2.00
2012-07-02	CVE	Cenovus Energy	D	-2.86	1.90	ALXN	Alexion Pharmaceuticals	A	3.00	1.90
2012-07-02	QVCA	Liberty Interactive	C	-1.85	2.00	STI	Suntrust Banks	A	2.26	2.00
2012-07-02	TEL	Te Connectivity	C	-1.86	2.40	GWW	Ww Grainger	A	2.32	2.40
2012-07-02	GOOGL	Alphabet	C	-1.86	1.70	VRSN	Verisign	A	2.26	1.70
2012-08-01	AMAT	Applied Materials	D	-2.86	1.40	AKAM	Akamai Technologies	A	2.31	1.40
2012-08-01	DVN	Devon Energy	D	-2.87	1.40	SUN	Sunoco	A	2.32	1.40
2012-08-01	AON	Aon	C	-1.85	1.10	PSA	Public Storage	A	2.52	1.10
2012-08-01	BBY	Best Buy	D	-2.89	1.50	WFM	Whole Foods Market	A	3.00	1.50
2012-08-01	BK	Bank Of New York Mellon	C	-1.86	1.50	RF	Regions Financial	A	2.38	1.50
2012-08-01	DELL	Dell	D	-2.89	1.90	VRSN	Verisign	A	2.27	1.90
2012-08-01	STT	State Street	C	-1.86	1.70	V	Visa	A	2.32	1.70
2012-08-01	HOG	Harley-davidson	C	-1.87	0.80	PHM	Pultegroup	A	2.52	0.80
2012-08-01	ITW	Illinois Tool Works	C	-1.85	2.30	GWW	Ww Grainger	A	2.35	2.30
2012-08-01	MCD	Mcdonald's	C	-1.85	1.10	DLTR	Dollar Tree	A	3.00	1.10
2012-08-01	PH	Parker-hannifin	C	-1.85	1.90	SHW	Sherwin-williams	A	2.32	1.90
2012-08-01	INTC	Intel	C	-1.85	2.30	WDC	Western Digital	A	2.27	2.30
2012-08-01	GS	Goldman Sachs	D	-2.87	1.80	ALL	Allstate	A	2.27	1.80
2012-08-01	VIAB	Viacom	C	-1.84	1.60	AZO	Autozone	A	2.52	1.60
2012-08-01	JPM	Jpmorgan Chase	C	-1.87	2.70	CCI	Crown Castle Intl Corp	A	2.26	2.70
2012-08-01	CVE	Cenovus Energy	D	-2.87	1.90	ALXN	Alexion Pharmaceuticals	A	3.00	1.90
2012-08-01	QVCA	Liberty Interactive	C	-1.84	2.10	EFX	Equifax	A	2.26	2.10
2012-08-01	TEL	Te Connectivity	C	-1.85	2.50	ROP	Roper Technologies	A	2.31	2.50
2012-08-01	GOOGL	Alphabet	C	-1.84	1.90	KLAC	Kla-tencor	A	2.25	1.90
2012-09-03	DVN	Devon Energy	D	-2.87	1.40	TSO	Tesoro	A	2.36	1.40
2012-09-03	BA	Boeing	C	-1.85	1.00	GWW	Ww Grainger	A	2.35	1.00
2012-09-03	BBY	Best Buy	D	-2.89	1.40	WFM	Whole Foods Market	A	3.00	1.40
2012-09-03	BK	Bank Of New York Mellon	C	-1.85	1.60	PSA	Public Storage	A	2.50	1.60
2012-09-03	DELL	Dell	D	-2.90	1.60	RF	Regions Financial	A	2.38	1.70
2012-09-03	STT	State Street	C	-1.85	1.70	PHM	Pultegroup	A	2.64	0.80
2012-09-03	HOG	Harley-davidson	C	-1.87	0.80	DLTR	Dollar Tree	A	3.00	1.10
2012-09-03	MCD	Mcdonald's	D	-2.85	1.10	SHW	Sherwin-williams	A	2.34	1.80
2012-09-03	PH	Parker-hannifin	C	-1.85	1.80	AKAM	Akamai Technologies	A	2.34	2.10
2012-09-03	INTC	Intel	C	-1.86	2.10	V	Visa	A	2.33	2.70
2012-09-03	JPM	Jpmorgan Chase	C	-1.87	2.70	ALXN	Alexion Pharmaceuticals	A	3.00	1.90
2012-09-03	CVE	Cenovus Energy	D	-2.86	1.90	MAS	Masco	A	2.37	0.90
2012-10-01	BA	Boeing	C	-1.85	0.90	GWW	Ww Grainger	A	2.36	1.90
2012-10-01	CMI	Cummins	C	-1.88	1.90					
2012-10-01	DELL	Dell	D	-2.91	1.20					
2012-10-01	FDX	Fedex	C	-1.85	2.50	SHW	Sherwin-williams	A	2.36	2.50
2012-10-01	STT	State Street	C	-1.84	1.80	PSA	Public Storage	A	2.48	1.80
2012-10-01	HOG	Harley-davidson	C	-1.87	0.70	PHM	Pultegroup	A	2.72	0.70
2012-10-01	INTC	Intel	C	-1.87	2.20	AKAM	Akamai Technologies	A	2.34	2.20
2012-11-01	BA	Boeing	C	-1.85	0.90	MAS	Masco	A	2.39	0.90

Date	Ticker	Name	R	SM	W (%)	Ticker	Name	R	SM	W (%)
2012-11-01	CMI	Cummins	C	-1.87	2.00	SHW	Sherwin-williams	A	2.34	2.00
2012-11-01	DELL	Dell	D	-2.92	1.20					
2012-11-01	TXN	Texas Instruments	D	-2.86	2.30	AKAM	Akamai Technologies	A	2.34	2.30
2012-11-01	INTC	Intel	D	-2.87	2.10	VRSN	Verisign	A	2.25	2.10
2012-12-03	AAPL	Apple	C	-1.86	2.20	AKAM	Akamai Technologies	A	2.32	2.20
2012-12-03	AMAT	Applied Materials	D	-2.85	1.20	CSC	Computer Sciences	A	2.29	1.20
2012-12-03	DVN	Devon Energy	D	-2.86	1.80	FSLR	First Solar	A	2.39	1.80
2012-12-03	BA	Boeing	C	-1.84	1.00	MAS	Masco	A	2.40	1.00
2012-12-03	CMI	Cummins	D	-2.87	2.00	SHW	Sherwin-williams	A	2.36	2.00
2012-12-03	DELL	Dell	D	-2.91	1.30					
2012-12-03	PH	Parker-hannifin	C	-1.84	2.10	ROP	Roper Technologies	A	2.34	2.10
2012-12-03	WFC	Wells Fargo	C	-1.85	2.20	V	Visa	A	2.38	2.20
2012-12-03	INTC	Intel	D	-2.89	1.90	JDSU	JDS Uniphase Corporation	A	2.24	1.90
2012-12-03	CVE	Cenovus Energy	C	-1.84	2.00	WFM	Whole Foods Market	A	3.00	2.00
2013-01-01	AAPL	Apple	C	-1.87	1.90	AKAM	Akamai Technologies	A	2.37	1.90
2013-01-01	DVN	Devon Energy	D	-2.86	2.20	FSLR	First Solar	A	2.44	2.20
2013-01-01	DELL	Dell	D	-2.91	1.90					
2013-01-01	HAL	Halliburton	C	-1.84	1.10	TSO	Tesoro	A	2.40	1.10
2013-01-01	MCD	Mcdonald's	D	-2.84	0.90	AZO	Autozone	A	2.51	0.90
2013-01-01	MSFT	Microsoft	D	-2.86	1.70	CSC	Computer Sciences	A	2.30	1.70
2013-01-01	WFC	Wells Fargo	C	-1.84	2.20	V	Visa	A	2.39	2.20
2013-01-01	INTC	Intel	D	-2.88	2.50	JDSU	JDS Uniphase Corporation	A	2.26	2.50
2013-01-01	CVE	Cenovus Energy	C	-1.84	1.80	ALXN	Alexion Pharmaceuticals	A	2.96	1.80
2013-02-01	AAPL	Apple	D	-2.89	1.50	AKAM	Akamai Technologies	A	2.37	1.50
2013-02-01	DVN	Devon Energy	D	-2.85	2.30	MPC	Marathon Petroleum	A	2.47	2.30
2013-02-01	MRK	Merck & Co	C	-1.85	0.90	ALXN	Alexion Pharmaceuticals	A	3.00	0.90
2013-02-01	MSFT	Microsoft	D	-2.86	1.70	CSC	Computer Sciences	A	2.32	1.70
2013-02-01	NOC	Northrop Grumman	C	-1.85	1.30	MAS	Masco	A	2.45	1.30
2013-02-01	WFC	Wells Fargo	C	-1.84	2.10	V	Visa	A	2.40	2.10
2013-02-01	INTC	Intel	D	-2.88	2.40	JDSU	JDS Uniphase Corporation	A	2.29	2.40
2013-02-01	KSS	Kohl's	D	-2.86	1.20	CBS	Cbs	A	2.53	1.20
2013-02-01	CVE	Cenovus Energy	C	-1.84	1.70	PHM	Pultegroup	A	2.96	1.70
2013-03-01	AAPL	Apple	D	-2.90	1.50	CSC	Computer Sciences	A	2.36	1.50
2013-03-01	DVN	Devon Energy	D	-2.85	2.20	TSO	Tesoro	A	2.53	2.20
2013-03-01	MRK	Merck & Co	C	-1.85	0.90	ALXN	Alexion Pharmaceuticals	A	2.88	0.90
2013-03-01	MSFT	Microsoft	D	-2.86	1.70	AKAM	Akamai Technologies	A	2.33	1.70
2013-03-01	NOC	Northrop Grumman	C	-1.85	1.30	MAS	Masco	A	2.46	1.30
2013-03-01	INTC	Intel	D	-2.88	2.40	SYMC	Symantec	A	2.30	2.40
2013-03-01	KSS	Kohl's	D	-2.86	1.20	NFLX	Netflix	A	2.59	1.20
2013-03-01	CVE	Cenovus Energy	C	-1.85	1.70	PHM	Pultegroup	A	2.91	1.70
2013-04-01	AAPL	Apple	D	-2.90	2.00	CSC	Computer Sciences	A	2.36	2.00
2013-04-01	MRK	Merck & Co	C	-1.85	0.90	ALXN	Alexion Pharmaceuticals	A	2.97	0.90
2013-04-01	CVE	Cenovus Energy	C	-1.85	1.60	PHM	Pultegroup	A	2.95	1.60
2013-05-01	AAPL	Apple	D	-2.90	2.00	CSC	Computer Sciences	A	2.34	2.00
2013-05-01	DVN	Devon Energy	D	-2.84	1.90	FSLR	First Solar	A	2.65	1.90
2013-05-01	CMI	Cummins	C	-1.86	1.80	MAS	Masco	A	2.49	1.80
2013-05-01	CVE	Cenovus Energy	D	-2.86	1.50	ALXN	Alexion Pharmaceuticals	A	2.98	1.50
2013-05-01	XOM	Exxon Mobil	C	-1.84	2.20	TSO	Tesoro	A	2.47	2.20
2013-06-03	AAPL	Apple	D	-2.89	1.90	MU	Micron Technology	A	2.36	1.90
2013-06-03	CMI	Cummins	C	-1.84	1.90	KSU	Kansas City Southern	A	2.56	1.90
2013-06-03	CVE	Cenovus Energy	D	-2.85	1.40	PHM	Pultegroup	A	3.00	1.40
2013-07-01	AAPL	Apple	D	-2.90	1.90					
2013-07-01	ORCL	Oracle	C	-1.86	2.40	MU	Micron Technology	A	2.43	2.40
2013-07-01	CVE	Cenovus Energy	D	-2.86	1.30	ALXN	Alexion Pharmaceuticals	A	2.98	1.30
2013-08-01	AAPL	Apple	D	-2.89	2.00	MU	Micron Technology	A	2.41	2.00

Date	Ticker	Name	R	SM	W (%)	Ticker	Name	R	SM	W (%)
2013-08-01	ORCL	Oracle	C	-1.85	2.40	HPQ	Hewlett-Packard	A	2.37	2.40
2013-09-02	APA	Apache	C	-1.84	1.30	COG	Cabot Oil & Gas	A	2.41	1.30
2013-09-02	BEN	Franklin Resources	C	-1.86	2.20	GNW	Genworth Financial	A	2.48	2.20
2013-09-02	ORCL	Oracle	C	-1.85	2.50	MU	Micron Technology	A	2.41	2.50
2013-09-02	UL	Unilever Adr	C	-1.85	1.60	STZ	Constellation Brands	A	2.50	1.60
2013-09-02	WMT	Wal-mart Stores	C	-1.85	1.00	NFLX	Netflix	A	2.88	1.00
2013-10-01	BAX	Baxter International	C	-1.85	1.00	ALXN	Alexion Pharmaceuticals	A	3.00	1.00
2013-10-01	ORCL	Oracle	C	-1.85	2.50	MU	Micron Technology	A	2.54	2.50
2013-10-01	UL	Unilever Adr	C	-1.85	1.60	STZ	Constellation Brands	A	2.54	1.60
2013-11-01	BAX	Baxter International	C	-1.85	1.00	ALXN	Alexion Pharmaceuticals	A	3.00	1.00
2013-11-01	UL	Unilever Adr	C	-1.85	1.60	STZ	Constellation Brands	A	2.61	1.60
2013-11-01	WMT	Wal-mart Stores	C	-1.83	1.00	NFLX	Netflix	A	3.00	1.00
2013-12-02	BAX	Baxter International	C	-1.85	1.00	BIIB	Biogen	A	3.00	1.00
2013-12-02	UL	Unilever Adr	C	-1.85	1.50	STZ	Constellation Brands	A	2.66	1.50
2014-01-01	BAX	Baxter International	D	-2.84	0.90	BIIB	Biogen	A	3.00	0.90
2014-01-01	UL	Unilever Adr	C	-1.84	1.60	STZ	Constellation Brands	A	2.65	1.60
2014-02-03	AFL	Aflac	C	-1.85	1.90	GNW	Genworth Financial	A	2.58	1.90
2014-02-03	AIG	American International	C	-1.85	2.40	AMP	Ameriprise Financial	A	2.45	2.40
2014-02-03	DVN	Devon Energy	C	-1.85	1.80	HP	Helmerich & Payne	A	2.37	1.80
2014-02-03	NOV	National Oilwell Varco	C	-1.85	1.60	EQT	Eqst	A	2.35	1.60
2014-02-03	KSS	Kohl's	C	-1.86	1.00	NFLX	Netflix	A	3.00	1.00
2014-02-03	CVE	Cenovus Energy	D	-2.85	1.00	BIIB	Biogen	A	3.00	1.00
2014-03-03	AFL	Aflac	C	-1.84	1.80	GNW	Genworth Financial	A	2.62	1.80
2014-03-03	AIG	American International	C	-1.84	2.30	AMP	Ameriprise Financial	A	2.48	2.30
2014-03-03	APA	Apache	C	-1.86	1.90	HP	Helmerich & Payne	A	2.42	1.90
2014-03-03	NOV	National Oilwell Varco	C	-1.85	1.60	EQT	Eqst	A	2.38	1.60
2014-03-03	MCD	McDonald's	D	-2.85	1.80	NFLX	Netflix	A	3.00	1.80
2014-03-03	WMT	Wal-mart Stores	C	-1.85	0.80	CBS	Cbs	A	2.83	0.80
2014-03-03	KSS	Kohl's	C	-1.84	1.00	TRIP	Tripadvisor	A	2.68	1.00
2014-03-03	CVE	Cenovus Energy	D	-2.84	1.00	BIIB	Biogen	A	3.00	1.00
2014-03-03	GM	General Motors	C	-1.85	1.70	STZ	Constellation Brands	A	2.75	1.70
2014-04-01	AFL	Aflac	C	-1.84	1.70	GNW	Genworth Financial	A	2.72	1.70
2014-04-01	APA	Apache	C	-1.85	2.40	HP	Helmerich & Payne	A	2.46	2.40
2014-04-01	NOV	National Oilwell Varco	C	-1.85	1.70	EOG	Eog Resources	A	2.39	1.70
2014-04-01	GS	Goldman Sachs	C	-1.85	1.60	AMP	Ameriprise Financial	A	2.50	1.60
2014-04-01	GM	General Motors	C	-1.86	1.90	STZ	Constellation Brands	A	2.79	1.90
2014-05-01	AFL	Aflac	C	-1.84	1.70	GNW	Genworth Financial	A	2.73	1.70
2014-05-01	BEN	Franklin Resources	C	-1.85	2.20	AMP	Ameriprise Financial	A	2.50	2.20
2014-05-01	GS	Goldman Sachs	C	-1.85	1.60	ALL	Allstate	A	2.42	1.60
2014-05-01	MA	Mastercard	C	-1.85	1.90	DFS	Discover Financial Services	A	2.40	1.90
2014-05-01	C	Citigroup	D	-2.86	1.40	STI	Suntrust Banks	A	2.40	1.40
2014-05-01	ADP	Automatic Data Processing	C	-1.84	0.90	IR	Ingersoll-rand	A	2.49	0.90
2014-05-01	GM	General Motors	C	-1.86	1.90	STZ	Constellation Brands	A	2.75	1.90
2014-05-01	V	Visa	C	-1.85	1.30	EFX	Equifax	A	2.40	1.30
2014-06-02	AFL	Aflac	C	-1.85	1.60	GNW	Genworth Financial	A	2.70	1.60

Date	Ticker	Name	R	SM	W (%)	Ticker	Name	R	SM	W (%)
2014-06-02	BAC	Bank Of America	C	-1.86	2.90	AMP	Ameriprise Financial	A	2.51	2.90
2014-06-02	STT	State Street	D	-2.86	1.60	ALL	Allstate	A	2.43	1.60
2014-06-02	HD	The Home Depot	C	-1.84	1.90	DAL	Delta Air Lines	A	2.79	1.90
2014-06-02	OMC	Omnicom	C	-1.84	1.80	LUV	Southwest Airlines	A	2.51	1.80
2014-06-02	GS	Goldman Sachs	C	-1.85	1.60	DFS	Discover Financial Services	A	2.43	1.60
2014-06-02	MA	Mastercard	C	-1.85	1.90	MCO	Moody's	A	2.42	1.90
2014-06-02	C	Citigroup	D	-2.86	1.40	STI	Suntrust Banks	A	2.41	1.40
2014-06-02	GM	General Motors	D	-2.86	1.90	STZ	Constellation Brands	A	2.78	1.90
2014-06-02	V	Visa	C	-1.85	1.30	TMK	Torchmark	A	2.40	1.30
2014-07-01	AFL	Aflac	C	-1.85	1.60	GNW	Genworth Financial	A	2.71	1.60
2014-07-01	BAC	Bank Of America	C	-1.85	3.30	AMP	Ameriprise Financial	A	2.54	3.30
2014-07-01	STT	State Street	D	-2.85	2.10	DFS	Discover Financial Services	A	2.45	2.10
2014-07-01	HD	The Home Depot	C	-1.84	2.10	DAL	Delta Air Lines	A	2.79	2.10
2014-07-01	OMC	Omnicom	C	-1.84	1.80	LUV	Southwest Airlines	A	2.53	1.80
2014-07-01	AMZN	Amazon.com	C	-1.86	2.30	DIS	Walt Disney	A	2.50	2.30
2014-07-01	GS	Goldman Sachs	C	-1.84	2.10	MCO	Moody's	A	2.44	2.10
2014-07-01	KSS	Kohl's	C	-1.85	1.30	PCLN	The Priceline	A	2.47	1.30
2014-07-01	MA	Mastercard	C	-1.85	2.40	ALL	Allstate	A	2.43	2.40
2014-07-01	C	Citigroup	D	-2.84	2.30	STI	Suntrust Banks	A	2.42	2.30
2014-07-01	V	Visa	C	-1.85	2.20	EFX	Equifax	A	2.41	2.20
2014-08-01	AFL	Aflac	C	-1.85	1.60	AMP	Ameriprise Financial	A	2.53	1.60
2014-08-01	SNY	Sanofi Adr	C	-1.84	2.00	BIIB	Biogen	A	3.00	2.00
2014-08-01	BAC	Bank Of America	C	-1.86	3.30	DFS	Discover Financial Services	A	2.43	3.30
2014-08-01	HOG	Harley-davidson	C	-1.86	0.50	STZ	Constellation Brands	A	2.77	0.50
2014-08-01	MCD	Mcdonald's	C	-1.85	1.80	DAL	Delta Air Lines	A	2.73	1.80
2014-08-01	WMT	Wal-mart Stores	C	-1.85	1.30	LUV	Southwest Airlines	A	2.54	1.30
2014-08-01	DEO	Diageo Adr	C	-1.85	1.90	KORS	Michael Kors	A	2.57	1.90
2014-08-01	KSS	Kohl's	C	-1.85	1.40	DIS	Walt Disney	A	2.49	1.40
2014-09-01	AFL	Aflac	C	-1.85	1.50	AMP	Ameriprise Financial	A	2.56	1.50
2014-09-01	HOG	Harley-davidson	C	-1.86	0.50	STZ	Constellation Brands	A	2.81	0.50
2014-09-01	MCD	Mcdonald's	C	-1.85	1.70	LUV	Southwest Airlines	A	2.61	1.70
2014-09-01	PH	Parker-hannifin	C	-1.85	1.50	IR	Ingersoll-rand	A	2.49	1.50
2014-09-01	WMT	Wal-mart Stores	C	-1.84	1.30	DIS	Walt Disney	A	2.52	1.30
2014-09-01	DEO	Diageo Adr	D	-2.85	1.90	KORS	Michael Kors	A	2.55	1.90
2014-10-01	AFL	Aflac	C	-1.86	1.80	AMP	Ameriprise Financial	A	2.53	1.80
2014-10-01	BEN	Franklin Resources	C	-1.84	2.00	DFS	Discover Financial Services	A	2.46	2.00
2014-10-01	MON	Monsanto	C	-1.85	1.60	STZ	Constellation Brands	A	2.79	1.60
2014-10-01	GIS	General Mills	C	-1.85	1.90	DLPH	Delphi Automotive	A	2.52	1.90
2014-10-01	HOG	Harley-davidson	D	-2.87	0.40	KORS	Michael Kors	A	2.50	0.40
2014-10-01	ITW	Illinois Tool Works	C	-1.85	1.70	URI	United Rentals	A	2.64	1.70
2014-10-01	ORCL	Oracle	C	-1.85	2.40	HPQ	Hewlett-Packard	A	2.49	2.40
2014-10-01	PH	Parker-hannifin	C	-1.86	1.40	R	Ryder System	A	2.44	1.40
2014-10-01	AMZN	Amazon.com	D	-2.85	2.30	LUV	Southwest Airlines	A	2.62	2.30
2014-10-01	UL	Unilever Adr	C	-1.85	1.50	SNA	Snap-on	A	2.41	1.50
2014-10-01	DEO	Diageo Adr	D	-2.86	2.10	GMCR	Keurig Green Mountain	A	2.37	2.10
2014-10-01	MA	Mastercard	C	-1.84	2.50	MCO	Moody's	A	2.45	2.50
2014-10-01	LVS	Las Vegas Sands	D	-2.88	1.20	DIS	Walt Disney	A	2.50	1.20
2014-10-01	GM	General Motors	D	-2.86	1.70	ADM	Archer Daniels Midland	A	2.34	1.70
2014-10-01	TEL	Te Connectivity	C	-1.86	1.80	LMT	Lockheed Martin	A	2.44	1.80
2014-11-03	AFL	Aflac	D	-2.85	1.80	AMP	Ameriprise Financial	A	2.56	1.80
2014-11-03	AMAT	Applied Materials	C	-1.84	1.00	HPQ	Hewlett-Packard	A	2.51	1.00
2014-11-03	AON	Aon	C	-1.84	1.70	MCO	Moody's	A	2.48	1.70
2014-11-03	APA	Apache	C	-1.88	2.00	HP	Helmerich & Payne	A	2.36	2.00
2014-11-03	BAX	Baxter International	C	-1.85	0.70	BIIB	Biogen	A	3.00	0.70
2014-11-03	BEN	Franklin Resources	C	-1.84	2.00	ALL	Allstate	A	2.48	2.00
2014-11-03	MON	Monsanto	C	-1.85	1.60	DLPH	Delphi Automotive	A	2.59	1.60

Date	Ticker	Name	R	SM	W (%)	Ticker	Name	R	SM	W (%)
2014-11-03	COF	Capital One Financial	C	-1.84	2.20	DFS	Discover Financial Services	A	2.46	2.20
2014-11-03	HAL	Halliburton	C	-1.88	1.40	WMB	Williams Companies	A	2.28	1.40
2014-11-03	HOG	Harley-davidson	D	-2.85	0.50	SNA	Snap-on	A	2.46	0.50
2014-11-03	ORCL	Oracle	C	-1.85	2.30	WDC	Western Digital	A	2.50	2.30
2014-11-03	AMZN	Amazon.com	D	-2.86	2.10	LUV	Southwest Airlines	A	2.68	2.10
2014-11-03	UL	Unilever Adr	C	-1.85	1.40	GMCR	Keurig Green Mountain	A	2.44	1.40
2014-11-03	DEO	Diageo Adr	D	-2.85	2.10	GT	Goodyear Tire & Rubber	A	2.34	2.10
2014-11-03	LVS	Las Vegas Sands	D	-2.88	1.20	DIS	Walt Disney	A	2.53	1.20
2014-11-03	GM	General Motors	D	-2.86	1.60	GPC	Genuine Parts	A	2.33	1.60
2014-11-03	TEL	Te Connectivity	C	-1.84	1.90	URI	United Rentals	A	2.68	1.90
2014-11-03	GLEN	Glencore	C	-1.86	1.00	GILD	Gilead Sciences	A	3.00	1.00
2014-11-03	NWSA	News	D	-2.86	1.20	CMG	Chipotle Mexican Grill	A	2.45	1.20
2014-12-01	AFL	Aflac	D	-2.85	1.80	AMP	Ameriprise Financial	A	2.58	1.80
2014-12-01	APA	Apache	D	-2.90	1.60	HP	Helmerich & Payne	A	2.29	1.60
2014-12-01	BAX	Baxter International	C	-1.84	0.80	BIIB	Biogen	A	3.00	0.80
2014-12-01	MON	Monsanto	C	-1.84	1.60	DLPH	Delphi Automotive	A	2.62	1.60
2014-12-01	GIS	General Mills	C	-1.84	1.90	SNA	Snap-on	A	2.46	1.90
2014-12-01	HAL	Halliburton	C	-1.91	1.10					
2014-12-01	UL	Unilever Adr	C	-1.85	1.40	GMCR	Keurig Green Mountain	A	2.40	1.40
2014-12-01	CVE	Cenovus Energy	D	-2.88	0.60	ALXN	Alexion Pharmaceuticals	A	3.00	0.60
2014-12-01	LVS	Las Vegas Sands	D	-2.88	1.20	LUV	Southwest Airlines	A	2.77	1.20
2014-12-01	GM	General Motors	D	-2.86	1.60	GT	Goodyear Tire & Rubber	A	2.38	1.60
2014-12-01	GLEN	Glencore	C	-1.86	1.00	GILD	Gilead Sciences	A	2.92	1.00
2014-12-01	NWSA	News	D	-2.86	1.20	DIS	Walt Disney	A	2.53	1.20
2015-01-01	SNY	Sanofi Adr	D	-2.87	1.60	BIIB	Biogen	A	3.00	1.60
2015-01-01	APA	Apache	D	-2.90	2.60	TSO	Tesoro	A	2.26	2.60
2015-01-01	COF	Capital One Financial	C	-1.83	2.00	AMP	Ameriprise Financial	A	2.59	2.00
2015-01-01	HAL	Halliburton	D	-2.91	1.20					
2015-01-01	CHK	Chesapeake Energy	D	-2.89	1.30	KMI	Kinder Morgan	A	2.23	1.30
2015-01-01	AMZN	Amazon.com	D	-2.85	2.30	LUV	Southwest Airlines	A	2.81	2.30
2015-01-01	UL	Unilever Adr	C	-1.85	1.40	DLPH	Delphi Automotive	A	2.62	1.40
2015-01-01	LVS	Las Vegas Sands	D	-2.89	1.30	RCL	Royal Caribbean Cruises	A	2.61	1.30
2015-01-01	PFG	Principal Financial	C	-1.84	1.40	MHFI	McGraw Hill Fin	A	2.54	1.40
2015-01-01	GLEN	Glencore	D	-2.87	1.30	ALXN	Alexion Pharmaceuticals	A	3.00	1.30
2015-01-01	NWSA	News	D	-2.86	1.80	DIS	Walt Disney	A	2.54	1.80
2015-01-01	GOOGL	Alphabet	D	-2.86	2.30	HPQ	Hewlett-Packard	A	2.57	2.30
2015-02-02	SNY	Sanofi Adr	D	-2.86	1.70	BIIB	Biogen	A	3.00	1.70
2015-02-02	APA	Apache	D	-2.89	2.80	TSO	Tesoro	A	2.29	2.80
2015-02-02	COF	Capital One Financial	C	-1.85	1.90	AMP	Ameriprise Financial	A	2.57	1.90
2015-02-02	NOV	National Oilwell Varco	D	-2.89	1.20	KMI	Kinder Morgan	A	2.22	1.20
2015-02-02	GE	General Electric	D	-2.85	1.60	URI	United Rentals	A	2.52	1.60
2015-02-02	HAL	Halliburton	D	-2.91	1.30					
2015-02-02	CHK	Chesapeake Energy	D	-2.88	1.40	MPC	Marathon Petroleum	A	2.21	1.40
2015-02-02	MSFT	Microsoft	C	-1.86	1.60	HPQ	Hewlett-Packard	A	2.52	1.60
2015-02-02	QCOM	Qualcomm	D	-2.87	1.70	AVGO	Avago Technologies	A	2.50	1.70
2015-02-02	LVS	Las Vegas Sands	D	-2.90	1.30	LUV	Southwest Airlines	A	2.85	1.30
2015-02-02	PFG	Principal Financial	C	-1.85	1.40	MHFI	McGraw Hill Fin	A	2.54	1.40
2015-02-02	GLEN	Glencore	D	-2.89	1.10	ALXN	Alexion Pharmaceuticals	A	3.00	1.10
2015-02-02	NWSA	News	D	-2.86	1.80	RCL	Royal Caribbean Cruises	A	2.55	1.80
2015-02-02	GOOGL	Alphabet	D	-2.85	2.40	WDC	Western Digital	A	2.49	2.40
2015-03-02	SNY	Sanofi Adr	D	-2.86	1.60	BIIB	Biogen	A	3.00	1.60
2015-03-02	APA	Apache	D	-2.89	2.60	TSO	Tesoro	A	2.32	2.60

Date	Ticker	Name	R	SM	W (%)	Ticker	Name	R	SM	W (%)
2015-03-02	COF	Capital One Financial	C	-1.84	1.90	MHFI	McGraw Hill Fin	A	2.62	1.90
2015-03-02	NOV	National Oilwell Varco	D	-2.89	1.20	MPC	Marathon Petroleum	A	2.22	1.20
2015-03-02	HAL	Halliburton	D	-2.90	1.30					
2015-03-02	CHK	Chesapeake Energy	D	-2.91	1.10					
2015-03-02	MSFT	Microsoft	C	-1.85	1.60	AVGO	Avago Technologies	A	2.63	1.60
2015-03-02	PH	Parker-hannifin	C	-1.84	1.40	URI	United Rentals	A	2.58	1.40
2015-03-02	DEO	Diageo Adr	D	-2.84	1.60	DLPH	Delphi Automotive	A	2.68	1.60
2015-03-02	INTC	Intel	C	-1.85	2.20	WDC	Western Digital	A	2.54	2.20
2015-03-02	QCOM	Qualcomm	D	-2.85	1.80	CSC	Computer Sciences	A	2.53	1.80
2015-03-02	LVS	Las Vegas Sands	D	-2.89	1.30	LUV	Southwest Airlines	A	2.85	1.30
2015-03-02	PFG	Principal Financial	C	-1.84	1.40	AMP	Ameriprise Financial	A	2.60	1.40
2015-03-02	GLEN	Glencore	D	-2.87	1.30	ALXN	Alexion Pharmaceuticals	A	3.00	1.30
2015-04-01	AIG	American International	C	-1.84	2.40	MHFI	McGraw Hill Fin	A	2.63	2.40
2015-04-01	APA	Apache	D	-2.90	3.00					
2015-04-01	BEN	Franklin Resources	D	-2.85	1.70	AMP	Ameriprise Financial	A	2.58	1.70
2015-04-01	CAT	Caterpillar	D	-2.88	1.30	CTAS	Cintas	A	2.51	1.30
2015-04-01	COF	Capital One Financial	C	-1.84	2.00	EFX	Equifax	A	2.52	2.00
2015-04-01	NOV	National Oilwell Varco	D	-2.90	0.90					
2015-04-01	GE	General Electric	D	-2.84	2.20	FISV	Fiserv	A	2.49	2.20
2015-04-01	STT	State Street	C	-1.85	1.90	ALL	Allstate	A	2.52	1.90
2015-04-01	HAL	Halliburton	D	-2.90	1.20					
2015-04-01	HOG	Harley-davidson	D	-2.86	0.40	HBI	Hanesbrands	A	3.00	0.40
2015-04-01	CHK	Chesapeake Energy	D	-2.92	1.00					
2015-04-01	MSFT	Microsoft	C	-1.86	1.60	AVGO	Avago Technologies	A	2.61	1.60
2015-04-01	PH	Parker-hannifin	C	-1.85	1.40	LMT	Lockheed Martin	A	2.49	1.40
2015-04-01	TROW	T Rowe Price	C	-1.84	1.20	BLK	Blackrock	A	2.43	1.20
2015-04-01	DEO	Diageo Adr	D	-2.85	1.50	DLPH	Delphi Automotive	A	2.67	1.50
2015-04-01	INTC	Intel	C	-1.86	2.20	CSC	Computer Sciences	A	2.48	2.20
2015-04-01	PCP	Precision Castparts	D	-2.87	1.30	R	Ryder System	A	2.47	1.30
2015-04-01	QCOM	Qualcomm	D	-2.86	1.80	LRCX	Lam Research	A	2.37	1.80
2015-04-01	LVS	Las Vegas Sands	D	-2.90	1.30	LUV	Southwest Airlines	A	2.83	1.30
2015-04-01	PFG	Principal Financial	C	-1.84	1.40	NDAQ	Nasdaq	A	2.40	1.40
2015-04-01	GLEN	Glencore	D	-2.87	1.00	BIIB	Biogen	A	3.00	1.00
2015-05-01	BEN	Franklin Resources	D	-2.85	1.70	MHFI	McGraw Hill Fin	A	2.63	1.70
2015-05-01	CAT	Caterpillar	D	-2.87	1.40	CTAS	Cintas	A	2.50	1.40
2015-05-01	COF	Capital One Financial	C	-1.83	2.00	EFX	Equifax	A	2.55	2.00
2015-05-01	NOV	National Oilwell Varco	D	-2.89	1.00	TSO	Tesoro	A	2.32	1.00
2015-05-01	STT	State Street	C	-1.84	2.00	ALL	Allstate	A	2.51	2.00
2015-05-01	HOG	Harley-davidson	D	-2.87	0.40	HBI	Hanesbrands	A	2.96	0.40
2015-05-01	CHK	Chesapeake Energy	D	-2.91	1.20					
2015-05-01	PH	Parker-hannifin	C	-1.85	1.40	FISV	Fiserv	A	2.48	1.40
2015-05-01	TROW	T Rowe Price	C	-1.84	1.10	BLK	Blackrock	A	2.43	1.10
2015-05-01	UNP	Union Pacific	C	-1.86	1.10	R	Ryder System	A	2.48	1.10
2015-05-01	DEO	Diageo Adr	D	-2.85	1.50	DLPH	Delphi Automotive	A	2.72	1.50
2015-05-01	INTC	Intel	C	-1.85	2.30	AVGO	Avago Technologies	A	2.60	2.30
2015-05-01	PCP	Precision Castparts	D	-2.87	1.20	LMT	Lockheed Martin	A	2.46	1.20
2015-05-01	QCOM	Qualcomm	D	-2.86	1.70	CSC	Computer Sciences	A	2.48	1.70
2015-05-01	LVS	Las Vegas Sands	D	-2.85	1.20	LUV	Southwest Airlines	A	2.82	1.20
2015-05-01	PFG	Principal Financial	C	-1.84	1.40	SCHW	Charles Schwab	A	2.40	1.40
2015-06-01	AMAT	Applied Materials	D	-2.87	0.90	AVGO	Avago Technologies	A	2.72	0.90
2015-06-01	BEN	Franklin Resources	D	-2.86	1.60	MHFI	McGraw Hill Fin	A	2.63	1.60
2015-06-01	MON	Monsanto	C	-1.85	1.70	HBI	Hanesbrands	A	2.98	1.70
2015-06-01	NOV	National Oilwell Varco	D	-2.91	0.90					
2015-06-01	HOG	Harley-davidson	D	-2.87	0.30	DLPH	Delphi Automotive	A	2.74	0.30
2015-06-01	CHK	Chesapeake Energy	D	-2.92	1.00					

Date	Ticker	Name	R	SM	W (%)	Ticker	Name	R	SM	W (%)
2015-06-01	OMC	Omnicom	C	-1.85	1.60	DIS	Walt Disney	A	2.64	1.60
2015-06-01	TROW	T Rowe Price	C	-1.85	1.10	EFX	Equifax	A	2.56	1.10
2015-06-01	UNP	Union Pacific	C	-1.86	1.10	CTAS	Cintas	A	2.54	1.10
2015-06-01	DEO	Diageo ADR	D	-2.85	1.50	SNA	Snap-on	A	2.54	1.50
2015-06-01	INTC	Intel	C	-1.85	2.30	CSC	Computer Sciences	A	2.50	2.30
2015-06-01	QCOM	Qualcomm	D	-2.84	1.70	LRCX	Lam Research	A	2.44	1.70
2015-06-01	LVS	Las Vegas Sands	D	-2.86	1.10	CVS	Cvs Health	A	2.53	1.10
2015-07-01	AMAT	Applied Materials	D	-2.87	0.90	AVGO	Avago Technologies	A	2.66	0.90
2015-07-01	APA	Apache	D	-2.87	2.80	TSO	Tesoro	A	2.31	2.80
2015-07-01	AXP	American Express	D	-2.86	1.50	MHFI	McGraw Hill Fin	A	2.61	1.50
2015-07-01	BEN	Franklin Resources	D	-2.86	1.60	EFX	Equifax	A	2.55	1.60
2015-07-01	MON	Monsanto	D	-2.86	2.30	HBI	Hanesbrands	A	3.00	2.30
2015-07-01	NOV	National Oilwell Varco	D	-2.91	0.90					
2015-07-01	HOG	Harley-davidson	D	-2.87	0.70	DLPH	Delphi Automotive	A	2.73	0.70
2015-07-01	CHK	Chesapeake Energy	D	-2.94	0.80					
2015-07-01	OMC	Omnicom	C	-1.86	1.20	DIS	Walt Disney	A	2.66	1.20
2015-07-01	TROW	T Rowe Price	D	-2.85	1.10	ALL	Allstate	A	2.48	1.10
2015-07-01	TXN	Texas Instruments	C	-1.86	1.70	CSC	Computer Sciences	A	2.49	1.70
2015-07-01	UNP	Union Pacific	C	-1.87	1.10	CTAS	Cintas	A	2.53	1.10
2015-07-01	INTC	Intel	D	-2.87	2.10	LRCX	Lam Research	A	2.44	2.10
2015-07-01	QCOM	Qualcomm	D	-2.85	1.90	SWKS	Skyworks Solutions	A	2.38	1.90
2015-07-01	LVS	Las Vegas Sands	D	-2.85	1.20	CVS	Cvs Health	A	2.55	1.20
2015-07-01	GM	General Motors	C	-1.86	1.60	SNA	Snap-on	A	2.56	1.60
2015-07-01	TEL	Te Connectivity	C	-1.85	2.00	FISV	Fiserv	A	2.52	2.00
2015-07-01	NWSA	News	D	-2.86	1.80	MCK	Mckesson	A	2.50	1.80
2015-08-03	AAPL	Apple	C	-1.85	2.00	AVGO	Avago Technologies	A	2.61	2.00
2015-08-03	AFL	Aflac	C	-1.84	2.00	MHFI	McGraw Hill Fin	A	2.61	2.00
2015-08-03	AMAT	Applied Materials	D	-2.89	0.80	CSC	Computer Sciences	A	2.48	0.80
2015-08-03	APA	Apache	D	-2.89	2.30	TSO	Tesoro	A	2.34	2.30
2015-08-03	AXP	American Express	D	-2.87	1.40	EFX	Equifax	A	2.58	1.40
2015-08-03	BEN	Franklin Resources	D	-2.87	1.50	ALL	Allstate	A	2.51	1.50
2015-08-03	CAT	Caterpillar	D	-2.86	1.40	FISV	Fiserv	A	2.54	1.40
2015-08-03	MON	Monsanto	D	-2.86	2.20	DLPH	Delphi Automotive	A	2.66	2.20
2015-08-03	NOV	National Oilwell Varco	D	-2.92	0.80					
2015-08-03	GE	General Electric	C	-1.84	2.40	CTAS	Cintas	A	2.53	2.40
2015-08-03	HOG	Harley-davidson	D	-2.86	0.80	SNA	Snap-on	A	2.57	0.80
2015-08-03	CHK	Chesapeake Energy	D	-2.95	0.60					
2015-08-03	MSFT	Microsoft	C	-1.84	1.90	LRCX	Lam Research	A	2.40	1.90
2015-08-03	OMC	Omnicom	C	-1.85	1.20	DIS	Walt Disney	A	2.70	1.20
2015-08-03	TROW	T Rowe Price	D	-2.85	1.10	SCHW	Charles Schwab	A	2.45	1.10
2015-08-03	TXN	Texas Instruments	C	-1.86	1.70	SWKS	Skyworks Solutions	A	2.34	1.70
2015-08-03	UNP	Union Pacific	D	-2.87	1.10	NOC	Northrop Grumman	A	2.45	1.10
2015-08-03	INTC	Intel	D	-2.87	2.00	BRCM	Broadcom Corp	A	2.34	2.00
2015-08-03	PCP	Precision Castparts	D	-2.85	1.20	GD	General Dynamics	A	2.38	1.20
2015-08-03	QCOM	Qualcomm	D	-2.85	1.90	INTU	Intuit	A	2.30	1.90
2015-08-03	LVS	Las Vegas Sands	D	-2.84	1.30	CVS	Cvs Health	A	2.59	1.30
2015-08-03	GM	General Motors	D	-2.86	1.50	EA	Electronic Arts	A	2.56	1.50
2015-08-03	TEL	Te Connectivity	C	-1.86	1.90	VMC	Vulcan Materials Co	A	2.32	1.90
2015-08-03	GLEN	Glencore	D	-2.89	0.70	NI	Nisource	A	3.00	0.70
2015-08-03	NWSA	News	D	-2.86	1.70	ORLY	O'reilly Automotive	A	2.50	1.70
2015-08-03	BHGE	Baker Hughes, A Ge	C	-1.87	0.40	VLO	Valero Energy	A	2.24	0.40
2015-09-01	AAPL	Apple	C	-1.87	2.00	LRCX	Lam Research	A	2.37	2.00
2015-09-01	AMAT	Applied Materials	D	-2.90	0.70	BRCM	Broadcom Corp	A	2.33	0.70
2015-09-01	AON	Aon	C	-1.86	1.90	MHFI	McGraw Hill Fin	A	2.56	1.90
2015-09-01	APA	Apache	D	-2.90	2.40	TSO	Tesoro	A	2.32	2.40
2015-09-01	BEN	Franklin Resources	D	-2.89	1.40	EFX	Equifax	A	2.54	1.40
2015-09-01	CAT	Caterpillar	D	-2.86	1.50	CTAS	Cintas	A	2.52	1.50
2015-09-01	MON	Monsanto	D	-2.87	2.30	DLPH	Delphi Automotive	A	2.61	2.30
2015-09-01	NOV	National Oilwell Varco	D	-2.92	0.80					
2015-09-01	GE	General Electric	C	-1.86	2.50	FISV	Fiserv	A	2.51	2.50
2015-09-01	STT	State Street	C	-1.86	2.00	ALL	Allstate	A	2.42	2.00

Date	Ticker	Name	R	SM	W (%)	Ticker	Name	R	SM	W (%)
2015-09-01	HAL	Halliburton	D	-2.87	1.10	CAM	Cameron International Corp.	A	2.26	1.10
2015-09-01	CHK	Chesapeake Energy	D	-2.96	0.60					
2015-09-01	MDT	Medtronic	C	-1.85	1.90	BIIB	Biogen	A	3.00	1.90
2015-09-01	MSFT	Microsoft	C	-1.86	1.80	FB	Facebook	A	2.26	1.80
2015-09-01	PH	Parker-hannifin	D	-2.86	1.40	NOC	Northrop Grumman	A	2.41	1.40
2015-09-01	OMC	Omnicom	C	-1.87	1.20	DIS	Walt Disney	A	2.57	1.20
2015-09-01	TROW	T Rowe Price	D	-2.87	1.10	NDAQ	Nasdaq	A	2.39	1.10
2015-09-01	TXN	Texas Instruments	C	-1.87	1.70	RHT	Red Hat	A	2.25	1.70
2015-09-01	UNP	Union Pacific	D	-2.89	1.10	GD	General Dynamics	A	2.35	1.10
2015-09-01	INTC	Intel	D	-2.88	2.10	INTU	Intuit	A	2.24	2.10
2015-09-01	QCOM	Qualcomm	D	-2.87	1.80	FFIV	F5 Networks	A	2.24	1.80
2015-09-01	GM	General Motors	D	-2.88	1.50	SNA	Snap-on	A	2.54	1.50
2015-09-01	TEL	Te Connectivity	C	-1.87	1.90	VMC	Vulcan Materials Co	A	2.32	1.90
2015-09-01	GLEN	Glencore	D	-2.93	0.50					
2015-09-01	NWSA	News	D	-2.88	1.70	CVS	Cvs Health	A	2.52	1.70
2015-09-01	BHGE	Baker Hughes, A Ge	D	-2.87	0.40	PSX	Phillips 66	A	2.22	0.40
2015-10-01	AAPL	Apple	C	-1.86	2.20	BRCM	Broadcom Corp	A	2.34	2.20
2015-10-01	AMAT	Applied Materials	D	-2.90	0.70					
2015-10-01	AON	Aon	C	-1.86	1.80	EFX	Equifax	A	2.55	1.80
2015-10-01	APA	Apache	D	-2.91	2.10					
2015-10-01	APC	Anadarko Petroleum	D	-2.89	1.10	TSO	Tesoro	A	2.35	1.10
2015-10-01	AXP	American Express	D	-2.85	2.20	MHFI	McGraw Hill Fin	A	2.53	2.20
2015-10-01	BEN	Franklin Resources	D	-2.89	1.30	ALL	Allstate	A	2.43	1.30
2015-10-01	CAT	Caterpillar	D	-2.88	1.80	FISV	Fiserv	A	2.54	1.80
2015-10-01	MON	Monsanto	D	-2.89	2.20	DLPH	Delphi Automotive	A	2.66	2.20
2015-10-01	COF	Capital One Financial	D	-2.87	1.90	NDAQ	Nasdaq	A	2.41	1.90
2015-10-01	CMI	Cummins	D	-2.88	1.30	CTAS	Cintas	A	2.53	1.30
2015-10-01	FDX	Fedex	D	-2.87	2.10	NOC	Northrop Grumman	A	2.43	2.10
2015-10-01	NOV	National Oilwell Varco	D	-2.93	0.80					
2015-10-01	GE	General Electric	D	-2.85	2.50	GD	General Dynamics	A	2.35	2.50
2015-10-01	STT	State Street	D	-2.86	2.10	SCHW	Charles Schwab	A	2.37	2.10
2015-10-01	HAL	Halliburton	D	-2.88	1.50	CAM	Cameron International Corp.	A	2.24	1.50
2015-10-01	CHK	Chesapeake Energy	D	-2.96	0.60					
2015-10-01	MDT	Medtronic	C	-1.86	1.80	BIIB	Biogen	A	3.00	1.80
2015-10-01	MSFT	Microsoft	C	-1.85	1.90	FB	Facebook	A	2.27	1.90
2015-10-01	ORCL	Oracle	D	-2.87	2.20	VRSN	Verisign	A	2.25	2.20
2015-10-01	PH	Parker-hannifin	D	-2.87	1.40	VMC	Vulcan Materials Co	A	2.33	1.40
2015-10-01	OMC	Omnicom	D	-2.86	0.70	DIS	Walt Disney	A	2.59	0.70
2015-10-01	TROW	T Rowe Price	D	-2.87	1.00	CB	Chubb	A	2.26	1.00
2015-10-01	TXN	Texas Instruments	D	-2.87	2.00	CTSH	Cognizant Technology Solutions	A	2.24	2.00
2015-10-01	UNP	Union Pacific	D	-2.88	1.10	TSS	Total System Services	A	2.26	1.10
2015-10-01	WFC	Wells Fargo	C	-1.85	1.80	PSA	Public Storage	A	2.24	1.80
2015-10-01	DEO	Diageo Adr	D	-2.85	1.60	EA	Electronic Arts	A	2.53	1.60
2015-10-01	INTC	Intel	D	-2.87	2.20	ALTR	Altera Corp.	A	2.24	2.20
2015-10-01	GS	Goldman Sachs	C	-1.87	2.00	MAC	Macerich	A	2.23	2.00
2015-10-01	QCOM	Qualcomm	D	-2.88	1.70	FFIV	F5 Networks	A	2.24	1.70
2015-10-01	UNH	Unitedhealth	C	-1.85	1.90	ALXN	Alexion Pharmaceuticals	A	3.00	1.90
2015-10-01	JPM	Jpmorgan Chase	C	-1.85	2.70	HIG	The Hartford Financial Services	A	2.23	2.70
2015-10-01	C	Citigroup	C	-1.86	2.90	CB	Chubb Corp	A	2.23	2.90
2015-10-01	GM	General Motors	D	-2.87	1.60	SNA	Snap-on	A	2.52	1.60
2015-10-01	TEL	Te Connectivity	C	-1.86	1.90	SEE	Sealed Air	A	2.26	1.90
2015-10-01	NWSA	News	D	-2.88	1.60	ORLY	O'reilly Automotive	A	2.53	1.60
2015-11-02	AAPL	Apple	C	-1.85	2.20	BRCM	Broadcom Corp	A	2.35	2.20
2015-11-02	AMAT	Applied Materials	D	-2.89	0.70	FB	Facebook	A	2.30	0.70
2015-11-02	AON	Aon	C	-1.85	1.70	EFX	Equifax	A	2.61	1.70

Date	Ticker	Name	R	SM	W (%)	Ticker	Name	R	SM	W (%)
2015-11-02	APA	Apache	D	-2.89	2.30	TSO	Tesoro	A	2.39	2.30
2015-11-02	APC	Anadarko Petroleum	D	-2.88	1.10	CAM	Cameron International Corp.	A	2.27	1.10
2015-11-02	AXP	American Express	D	-2.85	2.00	MHFI	McGraw Hill Fin	A	2.56	2.00
2015-11-02	BEN	Franklin Resources	D	-2.88	1.30	NDAQ	Nasdaq	A	2.47	1.30
2015-11-02	CAT	Caterpillar	D	-2.86	1.90	FISV	Fiserv	A	2.60	1.90
2015-11-02	MON	Monsanto	D	-2.88	2.20	DLPH	Delphi Automotive	A	2.72	2.20
2015-11-02	COF	Capital One Financial	D	-2.85	1.90	SCHW	Charles Schwab	A	2.41	1.90
2015-11-02	CMI	Cummins	D	-2.88	1.20	CTAS	Cintas	A	2.58	1.20
2015-11-02	FDX	Fedex	D	-2.86	2.00	NOC	Northrop Grumman	A	2.49	2.00
2015-11-02	NOV	National Oilwell Varco	D	-2.93	0.80					
2015-11-02	STT	State Street	D	-2.86	2.00	CB	Chubb	A	2.29	2.00
2015-11-02	HAL	Halliburton	D	-2.87	1.60	PSX	Phillips 66	A	2.26	1.60
2015-11-02	HOG	Harley-davidson	D	-2.86	0.90	SNA	Snap-on	A	2.58	0.90
2015-11-02	CHK	Chesapeake Energy	D	-2.96	0.50					
2015-11-02	MDT	Medtronic	C	-1.84	1.90	HSIC	Henry Schein	A	2.50	1.90
2015-11-02	ORCL	Oracle	D	-2.86	2.20	VRSN	Verisign	A	2.29	2.20
2015-11-02	PH	Parker-hannifin	D	-2.86	1.40	GD	General Dynamics	A	2.38	1.40
2015-11-02	TROW	T Rowe Price	D	-2.86	1.00	PSA	Public Storage	A	2.26	1.00
2015-11-02	UNP	Union Pacific	D	-2.88	1.00	VMC	Vulcan Materials Co	A	2.34	1.00
2015-11-02	WFC	Wells Fargo	D	-2.84	1.70	MAC	Macerich	A	2.26	1.70
2015-11-02	WHR	Whirlpool	D	-2.88	1.30	EA	Electronic Arts	A	2.57	1.30
2015-11-02	GS	Goldman Sachs	D	-2.86	1.90	PGR	Progressive	A	2.24	1.90
2015-11-02	QCOM	Qualcomm	D	-2.86	1.70	CTSH	Cognizant Technology Solutions	A	2.26	1.70
2015-11-02	UNH	Unitedhealth	C	-1.84	1.80	HUM	Humana	A	2.47	1.80
2015-11-02	JPM	Jpmorgan Chase	C	-1.84	2.60	CB	Chubb Corp	A	2.24	2.60
2015-11-02	C	Citigroup	D	-2.84	2.80	ICE	Intercontinental Exchange	A	2.24	2.80
2015-11-02	PFG	Principal Financial	D	-2.85	1.40	HIG	The Hartford Financial Services	A	2.23	1.40
2015-11-02	QVCA	Liberty Interactive	D	-2.85	1.90	AIZ	Assurant	A	2.23	1.90
2015-11-02	TEL	Te Connectivity	C	-1.85	1.90	TSS	Total System Services	A	2.30	1.90
2015-11-02	FCA	Fiat Chrysler Automobiles	C	-1.86	1.40	NI	Nisource	A	3.00	1.40
2015-12-01	AAPL	Apple	C	-1.85	2.10	BRCM	Broadcom Corp	A	2.37	2.10
2015-12-01	AON	Aon	D	-2.85	1.70	EFX	Equifax	A	2.63	1.70
2015-12-01	APC	Anadarko Petroleum	D	-2.89	1.00	TSO	Tesoro	A	2.41	1.00
2015-12-01	AXP	American Express	D	-2.85	1.90	MHFI	McGraw Hill Fin	A	2.59	1.90
2015-12-01	BEN	Franklin Resources	D	-2.88	1.30	NDAQ	Nasdaq	A	2.46	1.30
2015-12-01	CAT	Caterpillar	D	-2.87	1.80	FISV	Fiserv	A	2.60	1.80
2015-12-01	MON	Monsanto	D	-2.87	2.20	DLPH	Delphi Automotive	A	2.75	2.20
2015-12-01	COF	Capital One Financial	D	-2.84	1.90	SCHW	Charles Schwab	A	2.44	1.90
2015-12-01	CMI	Cummins	D	-2.89	1.00	CTAS	Cintas	A	2.58	1.00
2015-12-01	FDX	Fedex	D	-2.86	2.10	NOC	Northrop Grumman	A	2.48	2.10
2015-12-01	NOV	National Oilwell Varco	D	-2.93	0.80					
2015-12-01	GIS	General Mills	C	-1.84	2.00	ATVI	Activision Blizzard	A	2.61	2.00
2015-12-01	STT	State Street	D	-2.85	2.10	CB	Chubb	A	2.30	2.10
2015-12-01	HAL	Halliburton	D	-2.86	1.60	CAM	Cameron International Corp.	A	2.27	1.60
2015-12-01	HOG	Harley-davidson	D	-2.86	0.90	SNA	Snap-on	A	2.60	0.90
2015-12-01	CHK	Chesapeake Energy	D	-2.97	0.40					
2015-12-01	MDT	Medtronic	C	-1.84	1.90	HSIC	Henry Schein	A	2.52	1.90
2015-12-01	PH	Parker-hannifin	D	-2.86	1.30	VMC	Vulcan Materials Co	A	2.37	1.30
2015-12-01	TROW	T Rowe Price	D	-2.85	1.10	PSA	Public Storage	A	2.27	1.10
2015-12-01	UL	Unilever Adr	C	-1.84	1.40	EA	Electronic Arts	A	2.55	1.40
2015-12-01	UNP	Union Pacific	D	-2.89	1.00	TSS	Total System Services	A	2.33	1.00
2015-12-01	WHR	Whirlpool	D	-2.87	1.30	MNST	Monster Beverage	A	2.51	1.30
2015-12-01	QCOM	Qualcomm	D	-2.88	1.40	VRSN	Verisign	A	2.32	1.40

Date	Ticker	Name	R	SM	W (%)	Ticker	Name	R	SM	W (%)
2015-12-01	UNH	Unitedhealth	C	-1.85	1.80	HUM	Humana	A	2.45	1.80
2015-12-01	JPM	Jpmorgan Chase	C	-1.84	2.70	CB	Chubb Corp	A	2.24	2.70
2015-12-01	QVCA	Liberty Interactive	D	-2.86	1.90	AIZ	Assurant	A	2.24	1.90
2015-12-01	TEL	Te Connectivity	C	-1.85	2.00	MAS	Masco	A	2.28	2.00
2015-12-01	FCA	Fiat Chrysler Automobiles	C	-1.86	1.40	NI	Nisource	A	3.00	1.40
2016-01-01	AAPL	Apple	C	-1.87	2.20	BRCM	Broadcom Corp	A	2.39	2.20
2016-01-01	SNY	Sanofi Adr	D	-2.87	1.50	HSIC	Henry Schein	A	2.51	1.50
2016-01-01	AON	Aon	D	-2.85	1.80	EFX	Equifax	A	2.63	1.80
2016-01-01	ALLY	Ally Financial	D	-2.86	1.20	NDAQ	Nasdaq	A	2.46	1.20
2016-01-01	APC	Anadarko Petroleum	D	-2.91	1.50					
2016-01-01	AXP	American Express	D	-2.86	2.10	SCHW	Charles Schwab	A	2.43	2.10
2016-01-01	BEN	Franklin Resources	D	-2.90	1.20	CB	Chubb	A	2.30	1.20
2016-01-01	CAT	Caterpillar	D	-2.87	1.90	CTAS	Cintas	A	2.56	1.90
2016-01-01	COF	Capital One Financial	D	-2.85	1.90	PSA	Public Storage	A	2.27	1.90
2016-01-01	CMI	Cummins	D	-2.90	1.70	FISV	Fiserv	A	2.56	1.70
2016-01-01	FDX	Fedex	D	-2.87	2.10	NOC	Northrop Grumman	A	2.49	2.10
2016-01-01	NOV	National Oilwell Varco	D	-2.94	0.70					
2016-01-01	STT	State Street	D	-2.86	2.20	CB	Chubb Corp	A	2.24	2.20
2016-01-01	HAL	Halliburton	D	-2.88	1.50	TSO	Tesoro	A	2.37	1.50
2016-01-01	HOG	Harley-davidson	D	-2.87	0.90	DLPH	Delphi Automotive	A	2.73	0.90
2016-01-01	CHK	Chesapeake Energy	D	-2.97	0.30					
2016-01-01	PH	Parker-hannifin	D	-2.87	1.50	VMC	Vulcan Materials Co	A	2.34	1.50
2016-01-01	TROW	T Rowe Price	D	-2.86	1.10	MAC	Macerich	A	2.24	1.10
2016-01-01	UNP	Union Pacific	D	-2.89	1.40	TSS	Total System Services	A	2.29	1.40
2016-01-01	WHR	Whirlpool	D	-2.89	1.80	ATVI	Activision Blizzard	A	2.61	1.80
2016-01-01	GS	Goldman Sachs	D	-2.85	2.00	ICE	Intercontinental Exchange	A	2.23	2.00
2016-01-01	QCOM	Qualcomm	D	-2.88	1.50	VRSN	Verisign	A	2.31	1.50
2016-01-01	UNH	Unitedhealth	C	-1.84	1.90	HUM	Humana	A	2.46	1.90
2016-01-01	PFG	Principal Financial	D	-2.86	1.30	TRV	Travelers Companies	A	2.23	1.30
2016-01-01	QVCA	Liberty Interactive	D	-2.85	2.00	PGR	Progressive	A	2.23	2.00
2016-01-01	TEL	Te Connectivity	C	-1.85	2.00	ALLE	Allegion	A	2.27	2.00
2016-01-01	FCA	Fiat Chrysler Automobiles	C	-1.86	1.40	NI	Nisource	A	3.00	1.40
2016-02-01	AAPL	Apple	D	-2.88	2.20	FB	Facebook	A	2.34	2.20
2016-02-01	SNY	Sanofi Adr	D	-2.87	1.60	HSIC	Henry Schein	A	2.50	1.60
2016-02-01	AON	Aon	D	-2.86	1.80	EXR	Extra Space Storage	A	2.84	1.80
2016-02-01	APA	Apache	D	-2.87	2.30	TSO	Tesoro	A	2.31	2.30
2016-02-01	ALLY	Ally Financial	D	-2.88	1.10	EFX	Equifax	A	2.60	1.10
2016-02-01	APC	Anadarko Petroleum	D	-2.93	1.30					
2016-02-01	AXP	American Express	D	-2.89	1.80	NDAQ	Nasdaq	A	2.48	1.80
2016-02-01	BAC	Bank Of America	C	-1.87	3.40	SCHW	Charles Schwab	A	2.33	3.40
2016-02-01	BEN	Franklin Resources	D	-2.90	1.20					
2016-02-01	CAT	Caterpillar	D	-2.88	1.90	FISV	Fiserv	A	2.58	1.90
2016-02-01	CM-CSA	Comcast	C	-1.86	1.10	DIS	Walt Disney	A	2.55	1.10
2016-02-01	COF	Capital One Financial	D	-2.87	1.80	CB	Chubb	A	2.29	1.80
2016-02-01	CMI	Cummins	D	-2.89	1.90	NOC	Northrop Grumman	A	2.49	1.90
2016-02-01	FDX	Fedex	D	-2.88	2.00	VMC	Vulcan Materials Co	A	2.31	2.00
2016-02-01	NOV	National Oilwell Varco	D	-2.94	0.80					
2016-02-01	GIS	General Mills	C	-1.84	1.60	DLPH	Delphi Automotive	A	2.56	1.60
2016-02-01	STT	State Street	D	-2.89	1.90	PSA	Public Storage	A	2.28	1.90
2016-02-01	HAL	Halliburton	D	-2.89	1.50	FSLR	First Solar	A	2.28	1.50
2016-02-01	HOG	Harley-davidson	D	-2.89	0.80	SNA	Snap-on	A	2.56	0.80
2016-02-01	CHK	Chesapeake Energy	D	-2.98	0.30					
2016-02-01	ORCL	Oracle	D	-2.85	2.30	VRSN	Verisign	A	2.27	2.30
2016-02-01	PH	Parker-hannifin	D	-2.87	1.70	ALLE	Allegion	A	2.25	1.70
2016-02-01	TROW	T Rowe Price	D	-2.87	1.20	ICE	Intercontinental Exchange	A	2.24	1.20

Date	Ticker	Name	R	SM	W (%)	Ticker	Name	R	SM	W (%)
2016-02-01	TXN	Texas Instruments	C	-1.85	2.30	SNDK	Sandisk Corp	A	2.26	2.30
2016-02-01	UL	Unilever Adr	D	-2.83	1.70	ATVI	Activision Blizzard	A	2.55	1.70
2016-02-01	UNP	Union Pacific	D	-2.90	1.50					
2016-02-01	WHR	Whirlpool	D	-2.90	1.80	HRL	Hormel Foods	A	2.48	1.80
2016-02-01	GS	Goldman Sachs	D	-2.87	1.90	AIZ	Assurant	A	2.23	1.90
2016-02-01	QCOM	Qualcomm	D	-2.89	1.50	NVDA	Nvidia	A	2.25	1.50
2016-02-01	UNH	Unitedhealth	C	-1.84	2.00	HUM	Humana	A	2.43	2.00
2016-02-01	JPM	Jpmorgan Chase	C	-1.85	2.70	O	Realty Income	A	2.22	2.70
2016-02-01	MA	Mastercard	C	-1.85	2.70	TRV	Travelers Companies	A	2.22	2.70
2016-02-01	C	Citigroup	D	-2.87	2.60	FRT	Federal Realty Investment Trust	A	2.20	2.60
2016-02-01	ADP	Automatic Data Processing	C	-1.85	2.40	MAS	Masco	A	2.24	2.40
2016-02-01	PFG	Principal Financial	D	-2.88	1.20	KIM	Kimco Realty	A	2.20	1.20
2016-02-01	QVCA	Liberty Interactive	D	-2.86	2.10	HIG	The Hartford Financial Services	A	2.20	2.10
2016-02-01	TEL	Te Connectivity	C	-1.87	2.00	TSS	Total System Services	A	2.23	2.00
2016-02-01	NWSA	News	D	-2.86	1.70	AMZN	Amazon.com	A	2.33	1.70
2016-02-01	FCA	Fiat Chrysler Automobiles	D	-2.90	1.10	NI	Nisource	A	3.00	1.10
2016-03-01	AAPL	Apple	D	-2.87	2.20	FB	Facebook	A	2.32	2.20
2016-03-01	SNY	Sanofi Adr	D	-2.88	1.50	HSIC	Henry Schein	A	2.55	1.50
2016-03-01	AIG	American International	C	-1.87	2.50	EXR	Extra Space Storage	A	2.79	2.50
2016-03-01	AON	Aon	D	-2.85	2.00	EFX	Equifax	A	2.60	2.00
2016-03-01	APA	Apache	D	-2.87	2.10	TSO	Tesoro	A	2.29	2.10
2016-03-01	ALLY	Ally Financial	D	-2.87	1.20	NDAQ	Nasdaq	A	2.50	1.20
2016-03-01	APC	Anadarko Petroleum	D	-2.93	1.30					
2016-03-01	AXP	American Express	D	-2.88	1.80	CB	Chubb	A	2.30	1.80
2016-03-01	BAC	Bank Of America	D	-2.88	3.10	PSA	Public Storage	A	2.28	3.10
2016-03-01	BEN	Franklin Resources	D	-2.90	1.30	EQIX	Equinix Inc	A	2.24	1.30
2016-03-01	BK	Bank Of New York Mellon	D	-2.86	1.60	O	Realty Income	A	2.23	1.60
2016-03-01	CAT	Caterpillar	D	-2.87	2.00	FISV	Fiserv	A	2.61	2.00
2016-03-01	CM- CSA	Comcast	D	-2.85	1.20	AMZN	Amazon.com	A	2.34	1.20
2016-03-01	COF	Capital One Financial	D	-2.86	1.90	TRV	Travelers Companies	A	2.22	1.90
2016-03-01	CMI	Cummins	D	-2.88	2.00	NOC	Northrop Grumman	A	2.50	2.00
2016-03-01	FDX	Fedex	D	-2.87	2.10	MAS	Masco	A	2.27	2.10
2016-03-01	NOV	National Oilwell Varco	D	-2.94	0.70					
2016-03-01	STT	State Street	D	-2.88	2.00	HIG	The Hartford Financial Services	A	2.22	2.00
2016-03-01	HAL	Halliburton	D	-2.89	1.50	FSLR	First Solar	A	2.28	1.50
2016-03-01	HOG	Harley-davidson	D	-2.88	0.90	SNA	Snap-on	A	2.52	0.90
2016-03-01	CHK	Chesapeake Energy	D	-2.98	0.20					
2016-03-01	MDT	Medtronic	D	-2.84	2.10	EW	Edwards Lifesciences	A	2.46	2.10
2016-03-01	ORCL	Oracle	D	-2.84	2.40	VRSN	Verisign	A	2.31	2.40
2016-03-01	PH	Parker-hannifin	D	-2.86	1.80	ALLE	Allegion	A	2.27	1.80
2016-03-01	TROW	T Rowe Price	D	-2.86	1.20	CINF	Cincinnati Financial	A	2.21	1.20
2016-03-01	TXN	Texas Instruments	C	-1.85	2.30	NVDA	Nvidia	A	2.28	2.30
2016-03-01	UL	Unilever Adr	D	-2.83	1.70	ATVI	Activision Blizzard	A	2.51	1.70
2016-03-01	UNP	Union Pacific	D	-2.89	1.60	TSS	Total System Services	A	2.26	1.60
2016-03-01	WFC	Wells Fargo	D	-2.85	1.70	ICE	Intercontinental Exchange	A	2.21	1.70
2016-03-01	WHR	Whirlpool	D	-2.88	2.10	HRL	Hormel Foods	A	2.50	2.10
2016-03-01	DEO	Diageo Adr	D	-2.85	1.60	RAI	Reynolds American	A	2.42	1.60
2016-03-01	GS	Goldman Sachs	D	-2.87	1.80	AIZ	Assurant	A	2.20	1.80
2016-03-01	QCOM	Qualcomm	D	-2.88	1.70	KLAC	Kla-tencor	A	2.25	1.70
2016-03-01	UNH	Unitedhealth	D	-2.83	2.10	BCR	C R Bard	A	2.33	2.10
2016-03-01	JPM	Jpmorgan Chase	D	-2.85	2.70	KIM	Kimco Realty	A	2.20	2.70
2016-03-01	MA	Mastercard	C	-1.85	2.70	FRT	Federal Realty Investment Trust	A	2.20	2.70
2016-03-01	C	Citigroup	D	-2.88	2.50	AVB	Avalonbay Communities	A	2.19	2.50

Date	Ticker	Name	R	SM	W (%)	Ticker	Name	R	SM	W (%)
2016-03-01	ADP	Automatic Data Processing	C	-1.84	2.50	RTN	Raytheon	A	2.22	2.50
2016-03-01	GM	General Motors	D	-2.86	1.60	GMCR	Keurig Green Mountain	A	2.38	1.60
2016-03-01	PFG	Principal Financial	D	-2.87	1.20	WSH	Willis Group Holdings	A	2.18	1.20
2016-03-01	QVCA	Liberty Interactive	D	-2.86	2.10	CCI	Crown Castle Intl Corp	A	2.18	2.10
2016-03-01	V	Visa	C	-1.85	2.60	AIV	Apartment Investment & Management	A	2.17	2.60
2016-03-01	TEL	Te Connectivity	D	-2.87	2.00	FAST	Fastenal	A	2.21	2.00
2016-03-01	NWSA	News	D	-2.89	1.40	CVC	Cablevision Systems Corp	A	2.31	1.40
2016-03-01	FCA	Fiat Chrysler Automobiles	D	-2.89	1.20	NI	Nisource	A	3.00	1.20
2016-04-01	AAPL	Apple	D	-2.86	2.40	FB	Facebook	A	2.34	2.40
2016-04-01	SNY	Sanofi Adr	D	-2.88	1.50	HSIC	Henry Schein	A	2.56	1.50
2016-04-01	AIG	American International	D	-2.86	2.70	EXR	Extra Space Storage	A	2.88	2.70
2016-04-01	ALLY	Ally Financial	D	-2.86	2.00	EFX	Equifax	A	2.66	2.00
2016-04-01	APC	Anadarko Petroleum	D	-2.92	1.60					
2016-04-01	BAC	Bank Of America	D	-2.88	3.20	NDAQ	Nasdaq	A	2.52	3.20
2016-04-01	BEN	Franklin Resources	D	-2.89	1.40	CB	Chubb	A	2.31	1.40
2016-04-01	BK	Bank Of New York Mellon	D	-2.86	1.60	PSA	Public Storage	A	2.30	1.60
2016-04-01	MON	Monsanto	D	-2.85	1.70	SNA	Snap-on	A	2.55	1.70
2016-04-01	COF	Capital One Financial	D	-2.86	2.30	UDR	Udr	A	2.27	2.30
2016-04-01	FDX	Fedex	D	-2.85	2.20	FISV	Fiserv	A	2.64	2.20
2016-04-01	NOV	National Oilwell Varco	D	-2.94	0.60					
2016-04-01	STT	State Street	D	-2.88	2.40	EQIX	Equinix Inc	A	2.25	2.40
2016-04-01	HAL	Halliburton	D	-2.88	1.60	FSLR	First Solar	A	2.28	1.60
2016-04-01	TROW	T Rowe Price	D	-2.86	1.20	O	Realty Income	A	2.24	1.20
2016-04-01	TXN	Texas Instruments	C	-1.84	2.40	VRSN	Verisign	A	2.32	2.40
2016-04-01	WFC	Wells Fargo	D	-2.85	1.70	TRV	Travelers Companies	A	2.24	1.70
2016-04-01	DEO	Diageo Adr	D	-2.85	1.70	ATVI	Activision Blizzard	A	2.54	1.70
2016-04-01	GS	Goldman Sachs	D	-2.87	1.90	HIG	The Hartford Financial Services	A	2.23	1.90
2016-04-01	JPM	Jpmorgan Chase	D	-2.85	2.60	CINF	Cincinnati Financial	A	2.22	2.60
2016-04-01	C	Citigroup	D	-2.87	2.80	VTR	Ventas	A	2.22	2.80
2016-04-01	GM	General Motors	D	-2.86	1.60	HRL	Hormel Foods	A	2.51	1.60
2016-04-01	PFG	Principal Financial	D	-2.87	1.50	AIZ	Assurant	A	2.22	1.50
2016-04-01	QVCA	Liberty Interactive	D	-2.86	2.00	ICE	Intercontinental Exchange	A	2.21	2.00
2016-04-01	V	Visa	C	-1.84	2.70	KIM	Kimco Realty	A	2.21	2.70
2016-04-01	TEL	Te Connectivity	D	-2.86	2.10	NOC	Northrop Grumman	A	2.52	2.10
2016-04-01	NWSA	News	D	-2.86	1.70	AMZN	Amazon.com	A	2.35	1.70
2016-04-01	FCA	Fiat Chrysler Automobiles	D	-2.89	1.30	NI	Nisource	A	3.00	1.30
2016-05-02	AAPL	Apple	D	-2.88	2.00	FB	Facebook	A	2.35	2.00
2016-05-02	SNY	Sanofi Adr	D	-2.87	1.50	HSIC	Henry Schein	A	2.56	1.50
2016-05-02	AIG	American International	D	-2.85	2.70	EXR	Extra Space Storage	A	2.82	2.70
2016-05-02	ALLY	Ally Financial	D	-2.87	1.90	EFX	Equifax	A	2.68	1.90
2016-05-02	APC	Anadarko Petroleum	D	-2.91	1.80					
2016-05-02	BAC	Bank Of America	D	-2.87	3.40	NDAQ	Nasdaq	A	2.49	3.40
2016-05-02	COF	Capital One Financial	D	-2.85	2.30	CB	Chubb	A	2.31	2.30
2016-05-02	NOV	National Oilwell Varco	D	-2.93	0.70					
2016-05-02	STT	State Street	D	-2.87	2.50	PSA	Public Storage	A	2.28	2.50
2016-05-02	WFC	Wells Fargo	D	-2.85	1.70	EQIX	Equinix Inc	A	2.26	1.70
2016-05-02	DEO	Diageo Adr	D	-2.84	1.60	ATVI	Activision Blizzard	A	2.55	1.60
2016-05-02	INTC	Intel	D	-2.86	2.40	VRSN	Verisign	A	2.31	2.40
2016-05-02	GS	Goldman Sachs	D	-2.86	1.90	UDR	Udr	A	2.25	1.90
2016-05-02	JPM	Jpmorgan Chase	D	-2.84	2.70	WY	Weyerhaeuser	A	2.24	2.70
2016-05-02	C	Citigroup	D	-2.86	3.00	AIZ	Assurant	A	2.24	3.00
2016-05-02	GM	General Motors	D	-2.85	1.60	RAI	Reynolds American	A	2.41	1.60

Date	Ticker	Name	R	SM	W (%)	Ticker	Name	R	SM	W (%)
2016-05-02	PFG	Principal Financial	D	-2.86	1.60	O	Realty Income	A	2.23	1.60
2016-05-02	NWSA	News	D	-2.87	1.60	ULTA	Ulta Beauty	A	2.41	1.60
2016-05-02	FCA	Fiat Chrysler Automobiles	D	-2.89	1.30	NI	Nisource	A	3.00	1.30
2016-06-01	AAPL	Apple	D	-2.88	2.10	NVDA	Nvidia	A	2.40	2.10
2016-06-01	SNY	Sanofi Adr	D	-2.88	1.50	HSIC	Henry Schein	A	2.56	1.50
2016-06-01	AIG	American International	D	-2.85	2.70	EXR	Extra Space Storage	A	2.87	2.70
2016-06-01	ALLY	Ally Financial	D	-2.87	1.90	EFX	Equifax	A	2.71	1.90
2016-06-01	APC	Anadarko Petroleum	D	-2.91	1.80					
2016-06-01	BAC	Bank Of America	D	-2.87	3.40	NDAQ	Nasdaq	A	2.51	3.40
2016-06-01	COF	Capital One Financial	D	-2.85	2.30	CB	Chubb	A	2.33	2.30
2016-06-01	NOV	National Oilwell Varco	D	-2.94	0.70					
2016-06-01	STT	State Street	D	-2.87	2.50	PSA	Public Storage	A	2.28	2.50
2016-06-01	WFC	Wells Fargo	D	-2.85	1.70	EQIX	Equinix Inc	A	2.28	1.70
2016-06-01	DEO	Diageo Adr	D	-2.84	1.60	ATVI	Activision Blizzard	A	2.61	1.60
2016-06-01	GS	Goldman Sachs	D	-2.87	1.80	NAVI	Navient	A	2.27	1.80
2016-06-01	JPM	Jpmorgan Chase	D	-2.84	2.80	DLR	Digital Realty Trust	A	2.25	2.80
2016-06-01	C	Citigroup	D	-2.86	3.00	UDR	Udr	A	2.25	3.00
2016-06-01	GM	General Motors	D	-2.86	1.50	RAI	Reynolds American	A	2.42	1.50
2016-06-01	PFG	Principal Financial	D	-2.86	1.60	ICE	Intercontinental Exchange	A	2.24	1.60
2016-06-01	NWSA	News	D	-2.87	1.50	ALK	Alaska Air	A	2.68	1.50
2016-06-01	FCA	Fiat Chrysler Automobiles	D	-2.90	1.10					
2016-07-01	AAPL	Apple	D	-2.88	2.20	NVDA	Nvidia	A	2.40	2.20
2016-07-01	SNY	Sanofi Adr	D	-2.87	1.60	HSIC	Henry Schein	A	2.58	1.60
2016-07-01	AIG	American International	D	-2.86	2.60	EXR	Extra Space Storage	A	2.85	2.60
2016-07-01	ALLY	Ally Financial	D	-2.88	1.80	EFX	Equifax	A	2.72	1.80
2016-07-01	BAC	Bank Of America	D	-2.88	3.00	CB	Chubb	A	2.34	3.00
2016-07-01	COF	Capital One Financial	D	-2.87	2.10	EQIX	Equinix Inc	A	2.30	2.10
2016-07-01	NOV	National Oilwell Varco	D	-2.93	0.90					
2016-07-01	STT	State Street	D	-2.89	2.20	DLR	Digital Realty Trust	A	2.29	2.20
2016-07-01	HOG	Harley-davidson	D	-2.82	1.30	ATVI	Activision Blizzard	A	2.63	1.30
2016-07-01	MSFT	Microsoft	C	-1.85	2.20	FB	Facebook	A	2.34	2.20
2016-07-01	WFC	Wells Fargo	D	-2.86	1.70	O	Realty Income	A	2.27	1.70
2016-07-01	GS	Goldman Sachs	D	-2.88	1.80	UDR	Udr	A	2.26	1.80
2016-07-01	JPM	Jpmorgan Chase	D	-2.85	2.60	VTR	Ventas	A	2.25	2.60
2016-07-01	C	Citigroup	D	-2.87	2.90	IRM	Iron Mountain	A	2.25	2.90
2016-07-01	GM	General Motors	D	-2.87	1.60	RAI	Reynolds American	A	2.45	1.60
2016-07-01	LNKD	Linkedin	D	-2.88	1.70	FISV	Fiserv	A	2.67	1.70
2016-07-01	TEL	Te Connectivity	D	-2.85	2.00	NOC	Northrop Grumman	A	2.57	2.00
2016-07-01	NWSA	News	D	-2.88	1.40	ULTA	Ulta Beauty	A	2.48	1.40
2016-07-01	FCA	Fiat Chrysler Automobiles	D	-2.91	1.10					
2016-08-01	SNY	Sanofi Adr	D	-2.87	1.60	EW	Edwards Lifesciences	A	2.59	1.60
2016-08-01	BAC	Bank Of America	D	-2.87	3.20	EXR	Extra Space Storage	A	2.81	3.20
2016-08-01	COF	Capital One Financial	D	-2.86	2.10	EFX	Equifax	A	2.74	2.10
2016-08-01	GS	Goldman Sachs	D	-2.87	1.80	CB	Chubb	A	2.32	1.80
2016-08-01	C	Citigroup	D	-2.87	2.80	EQIX	Equinix Inc	A	2.29	2.80
2016-08-01	FCA	Fiat Chrysler Automobiles	D	-2.91	1.00					
2016-09-01	SNY	Sanofi Adr	D	-2.88	1.40	EW	Edwards Lifesciences	A	2.60	1.40
2016-09-01	TROW	T Rowe Price	C	-1.85	1.10	EXR	Extra Space Storage	A	2.76	1.10
2016-09-01	QVCA	Liberty Interactive	D	-2.87	1.60	EFX	Equifax	A	2.75	1.60
2016-09-01	FCA	Fiat Chrysler Automobiles	D	-2.90	1.10					
2016-10-03	SNY	Sanofi Adr	D	-2.88	0.90	EW	Edwards Lifesciences	A	2.62	0.90

Date	Ticker	Name	R	SM	W (%)	Ticker	Name	R	SM	W (%)
2016-10-03	NOV	National Oilwell Varco	C	-1.83	1.10	CHK	Chesapeake Energy	A	2.67	1.10
2016-10-03	TROW	T Rowe Price	D	-2.86	0.80	EFX	Equifax	A	2.76	0.80
2016-10-03	WFC	Wells Fargo	D	-2.86	1.60	EXR	Extra Space Storage	A	2.73	1.60
2016-10-03	QVCA	Liberty Interactive	D	-2.87	1.60	CB	Chubb	A	2.32	1.60
2016-10-03	FCA	Fiat Chrysler Automobiles	D	-2.91	1.30					
2016-11-01	SNY	Sanofi Adr	D	-2.88	0.90	EW	Edwards Lifesciences	A	2.48	0.90
2016-11-01	CM-CSA	Comcast	C	-1.85	1.30	ULTA	Ulta Beauty	A	2.47	1.30
2016-11-01	ORCL	Oracle	C	-1.85	2.40	NVDA	Nvidia	A	2.60	2.40
2016-11-01	TROW	T Rowe Price	D	-2.86	0.70	EFX	Equifax	A	2.70	0.70
2016-11-01	WFC	Wells Fargo	D	-2.85	1.70	CB	Chubb	A	2.32	1.70
2016-11-01	WHR	Whirlpool	C	-1.87	1.90	ATVI	Activision Blizzard	A	2.67	1.90
2016-11-01	QVCA	Liberty Interactive	D	-2.89	1.50	CMA	Comerica	A	2.28	1.50
2016-12-01	SNY	Sanofi Adr	D	-2.88	0.80	EW	Edwards Lifesciences	A	2.42	0.80
2016-12-01	ORCL	Oracle	C	-1.85	2.20	NVDA	Nvidia	A	2.76	2.20
2016-12-01	UL	Unilever Adr	C	-1.87	0.60	ATVI	Activision Blizzard	A	2.56	0.60
2016-12-01	WHR	Whirlpool	C	-1.86	1.90	RAI	Reynolds American	A	2.45	1.90
2016-12-01	QVCA	Liberty Interactive	D	-2.87	1.60	EFX	Equifax	A	2.63	1.60
2017-01-02	AN	Autonation	D	-2.84	0.40	ULTA	Ulta Beauty	A	2.50	0.40
2017-01-02	MDT	Medtronic	C	-1.87	0.80	EW	Edwards Lifesciences	A	2.49	0.80
2017-01-02	ORCL	Oracle	C	-1.85	2.30	NVDA	Nvidia	A	2.92	2.30
2017-01-02	UL	Unilever Adr	D	-2.86	2.10	ATVI	Activision Blizzard	A	2.57	2.10
2017-01-02	DEO	Diageo Adr	D	-2.85	2.20	RAI	Reynolds American	A	2.47	2.20
2017-01-02	QVCA	Liberty Interactive	D	-2.88	1.70	CMA	Comerica	A	2.37	1.70
2017-02-01	MDT	Medtronic	D	-2.86	0.80	EW	Edwards Lifesciences	A	2.51	0.80
2017-02-01	UL	Unilever Adr	D	-2.86	2.10	ATVI	Activision Blizzard	A	2.64	2.10
2017-02-01	QVCA	Liberty Interactive	D	-2.88	1.60	LNC	Lincoln National	A	2.37	1.60
2017-03-01	APA	Apache	C	-1.87	2.30	WMB	Williams Companies	A	2.43	2.30
2017-03-01	QVCA	Liberty Interactive	D	-2.88	1.50	CMA	Comerica	A	2.40	1.50
2017-04-03	APA	Apache	C	-1.87	2.40	WMB	Williams Companies	A	2.45	2.40
2017-04-03	APC	Anadarko Petroleum	C	-1.86	2.00	KMI	Kinder Morgan	A	2.30	2.00
2017-04-03	GE	General Electric	D	-2.85	2.70	URI	United Rentals	A	2.48	2.70
2017-04-03	CHK	Chesapeake Energy	C	-1.88	0.70	CXO	Concho Resources	A	2.30	0.70
2017-04-03	QVCA	Liberty Interactive	D	-2.88	1.40	CMA	Comerica	A	2.37	1.40
2017-05-01	AIG	American International	C	-1.85	2.70	CMA	Comerica	A	2.38	2.70
2017-05-01	AN	Autonation	D	-2.87	1.30	ULTA	Ulta Beauty	A	2.55	1.30
2017-05-01	APA	Apache	D	-2.88	2.30	WMB	Williams Companies	A	2.46	2.30
2017-05-01	APC	Anadarko Petroleum	C	-1.87	1.80	CXO	Concho Resources	A	2.29	1.80
2017-05-01	GE	General Electric	D	-2.85	2.60	URI	United Rentals	A	2.42	2.60
2017-05-01	CHK	Chesapeake Energy	C	-1.89	0.70	HAL	Halliburton	A	2.27	0.70
2017-05-01	WHR	Whirlpool	C	-1.84	2.00	ATVI	Activision Blizzard	A	2.83	2.00
2017-05-01	GM	General Motors	C	-1.85	1.50	RAI	Reynolds American	A	2.54	1.50
2017-06-01	AIG	American International	C	-1.84	2.70	CB	Chubb	A	2.37	2.70
2017-06-01	AN	Autonation	D	-2.87	1.20	ULTA	Ulta Beauty	A	2.60	1.20
2017-06-01	APA	Apache	D	-2.88	2.20	WMB	Williams Companies	A	2.43	2.20
2017-06-01	ALLY	Ally Financial	C	-1.87	2.00	CMA	Comerica	A	2.37	2.00
2017-06-01	APC	Anadarko Petroleum	C	-1.88	1.60	CXO	Concho Resources	A	2.29	1.60
2017-06-01	COF	Capital One Financial	C	-1.86	2.10	LNC	Lincoln National	A	2.36	2.10
2017-06-01	NOV	National Oilwell Varco	C	-1.87	1.10	MPC	Marathon Petroleum	A	2.25	1.10
2017-06-01	GE	General Electric	D	-2.86	2.40	MTD	Mettler Toledo International	A	2.44	2.40
2017-06-01	HOG	Harley-davidson	C	-1.86	1.10	ATVI	Activision Blizzard	A	2.94	1.10

Date	Ticker	Name	R	SM	W (%)	Ticker	Name	R	SM	W (%)
2017-06-01	CHK	Chesapeake Energy	C	-1.89	0.60	BHI	Baker Hughes	A	2.24	0.60
2017-06-01	WFC	Wells Fargo	C	-1.85	1.60	ZION	Zions Bancorp	A	2.34	1.60
2017-06-01	GM	General Motors	C	-1.85	1.50	RAI	Reynolds American	A	2.56	1.50
2017-07-03	AN	Autonation	D	-2.87	0.90	AMZN	Amazon.com	A	2.55	0.90
2017-07-03	APA	Apache	D	-2.88	2.40	WMB	Williams Companies	A	2.46	2.40
2017-07-03	ALLY	Ally Financial	C	-1.85	2.20	CMA	Comerica	A	2.40	2.20
2017-07-03	APC	Anadarko Petroleum	D	-2.89	0.90	CXO	Concho Resources	A	2.29	0.90
2017-07-03	COF	Capital One Financial	C	-1.86	2.30	CB	Chubb	A	2.38	2.30
2017-07-03	NOV	National Oilwell Varco	C	-1.86	1.30	MPC	Marathon Petroleum	A	2.25	1.30
2017-07-03	GE	General Electric	D	-2.86	2.50	MTD	Mettler Toledo International	A	2.44	2.50
2017-07-03	HOG	Harley-davidson	C	-1.85	1.20	ATVI	Activision Blizzard	A	2.89	1.20
2017-07-03	CHK	Chesapeake Energy	D	-2.89	0.90	TSO	Tesoro	A	2.19	0.90
2017-07-03	WFC	Wells Fargo	C	-1.84	2.20	ZION	Zions Bancorp	A	2.37	2.20
2017-07-03	QCOM	Qualcomm	C	-1.87	1.40	NVDA	Nvidia	A	3.00	1.40
2017-07-03	GM	General Motors	C	-1.85	1.50	RAI	Reynolds American	A	2.54	1.50
2017-08-01	AN	Autonation	D	-2.87	0.80	AMZN	Amazon.com	A	2.58	0.80
2017-08-01	APA	Apache	D	-2.88	2.40	WMB	Williams Companies	A	2.47	2.40
2017-08-01	APC	Anadarko Petroleum	D	-2.90	0.90	CXO	Concho Resources	A	2.30	0.90
2017-08-01	NOV	National Oilwell Varco	D	-2.87	1.20	MPC	Marathon Petroleum	A	2.27	1.20
2017-08-01	GE	General Electric	D	-2.87	2.30	URI	United Rentals	A	2.45	2.30
2017-08-01	HOG	Harley-davidson	C	-1.87	1.00	ATVI	Activision Blizzard	A	2.98	1.00
2017-08-01	CHK	Chesapeake Energy	D	-2.90	0.90					
2017-08-01	WFC	Wells Fargo	C	-1.85	2.10	LNC	Lincoln National	A	2.40	2.10
2017-08-01	QCOM	Qualcomm	C	-1.87	1.40	NVDA	Nvidia	A	3.00	1.40
2017-09-01	APA	Apache	D	-2.90	1.90					
2017-09-01	APC	Anadarko Petroleum	D	-2.90	0.80					
2017-09-01	NOV	National Oilwell Varco	D	-2.88	1.20	WMB	Williams Companies	A	2.45	1.20
2017-09-01	GE	General Electric	D	-2.87	2.20	URI	United Rentals	A	2.46	2.20
2017-09-01	HOG	Harley-davidson	D	-2.87	1.00	ATVI	Activision Blizzard	A	3.00	1.00
2017-09-01	CHK	Chesapeake Energy	D	-2.92	0.70					
2017-09-01	WFC	Wells Fargo	C	-1.86	2.00	LNC	Lincoln National	A	2.37	2.00
2017-09-01	INTC	Intel	D	-2.84	2.10	NVDA	Nvidia	A	3.00	2.10
2017-09-01	QCOM	Qualcomm	D	-2.88	1.30	AMD	Advanced Micro Devices	A	3.00	1.30
2017-10-02	APA	Apache	D	-2.89	2.00	WMB	Williams Companies	A	2.45	2.00
2017-10-02	APC	Anadarko Petroleum	D	-2.89	1.40	MPC	Marathon Petroleum	A	2.26	1.40
2017-10-02	GE	General Electric	D	-2.87	2.80	URI	United Rentals	A	2.54	2.80
2017-10-02	HOG	Harley-davidson	D	-2.87	1.00	ATVI	Activision Blizzard	A	3.00	1.00
2017-10-02	CHK	Chesapeake Energy	D	-2.91	0.50					
2017-10-02	WFC	Wells Fargo	C	-1.85	2.30	CMA	Comerica	A	2.41	2.30
2017-10-02	QCOM	Qualcomm	D	-2.88	1.30	NVDA	Nvidia	A	3.00	1.30
2017-11-01	APA	Apache	D	-2.90	1.80	MPC	Marathon Petroleum	A	2.29	1.80
2017-11-01	APC	Anadarko Petroleum	D	-2.89	1.40	TSO	Tesoro	A	2.22	1.40
2017-11-01	CM-CSA	Comcast	C	-1.86	1.50	AMZN	Amazon.com	A	2.64	1.50
2017-11-01	GE	General Electric	D	-2.90	2.20	URI	United Rentals	A	2.55	2.20
2017-11-01	HOG	Harley-davidson	D	-2.87	0.90	ATVI	Activision Blizzard	A	3.00	0.90
2017-11-01	CHK	Chesapeake Energy	D	-2.92	0.40					
2017-11-01	QCOM	Qualcomm	D	-2.87	1.30	NVDA	Nvidia	A	3.00	1.30
2017-12-01	APA	Apache	D	-2.89	1.90	MPC	Marathon Petroleum	A	2.30	1.90
2017-12-01	APC	Anadarko Petroleum	D	-2.89	1.40	MRO	Marathon Oil	A	2.23	1.40

Date	Ticker	Name	R	SM	W (%)	Ticker	Name	R	SM	W (%)
2017-12-01	CM-CSA	Comcast	C	-1.85	1.50	AMZN	Amazon.com	A	2.68	1.50
2017-12-01	GE	General Electric	D	-2.91	2.00					
2017-12-01	HOG	Harley-davidson	D	-2.87	1.00	ATVI	Activision Blizzard	A	2.98	1.00
2017-12-01	CHK	Chesapeake Energy	D	-2.92	0.50					
2017-12-01	MDT	Medtronic	C	-1.85	1.10	ALGN	Align Technology	A	2.72	1.10
2017-12-01	WHR	Whirlpool	D	-2.86	1.60	STZ	Constellation Brands	A	2.44	1.60
2017-12-01	CHTR	Charter Communications	C	-1.86	1.10	MAR	Marriott International	A	2.35	1.10
2018-01-01	APA	Apache	D	-2.90	2.00	MPC	Marathon Petroleum	A	2.31	2.00
2018-01-01	CM-CSA	Comcast	C	-1.84	2.30	AMZN	Amazon.com	A	2.68	2.30
2018-01-01	CVS	Cvs Health	D	-2.85	1.10	BBY	Best Buy	A	2.39	1.10
2018-01-01	NOV	National Oilwell Varco	D	-2.83	1.10	MRO	Marathon Oil	A	2.26	1.10
2018-01-01	GE	General Electric	D	-2.91	1.90					
2018-01-01	HOG	Harley-davidson	D	-2.87	1.00	ATVI	Activision Blizzard	A	3.00	1.00
2018-01-01	CHK	Chesapeake Energy	D	-2.92	0.40					
2018-01-01	MDT	Medtronic	C	-1.85	1.40	ALGN	Align Technology	A	2.63	1.40
2018-01-01	WHR	Whirlpool	D	-2.86	0.70	STZ	Constellation Brands	A	2.46	0.70
2018-01-01	CHTR	Charter Communications	C	-1.86	2.20	MAR	Marriott International	A	2.37	2.20
2018-02-01	APA	Apache	D	-2.89	2.00	MPC	Marathon Petroleum	A	2.32	2.00
2018-02-01	CVS	Cvs Health	D	-2.84	1.10	AMZN	Amazon.com	A	2.81	1.10
2018-02-01	GE	General Electric	D	-2.92	1.70					
2018-02-01	CHK	Chesapeake Energy	D	-2.93	0.40					
2018-02-01	WHR	Whirlpool	D	-2.85	0.70	ATVI	Activision Blizzard	A	3.00	0.70
2018-03-01	AIG	American International	D	-2.85	2.50	CMA	Comerica	A	2.52	2.50
2018-03-01	APA	Apache	D	-2.92	1.60					
2018-03-01	GE	General Electric	D	-2.93	1.50					
2018-03-01	CHK	Chesapeake Energy	D	-2.94	0.30					
2018-03-01	UL	Unilever Adr	C	-1.86	1.90	ATVI	Activision Blizzard	A	3.00	1.90
2018-03-01	WHR	Whirlpool	D	-2.87	0.70	STZ	Constellation Brands	A	2.44	0.70
2018-03-30	AIG	American International	D	-2.86	2.50	CMA	Comerica	A	2.52	2.50
2018-03-30	GE	General Electric	D	-2.93	1.50					
2018-03-30	CHK	Chesapeake Energy	D	-2.94	0.30					
2018-03-30	UL	Unilever Adr	C	-1.85	2.20	ATVI	Activision Blizzard	A	3.00	2.20
2018-03-30	WHR	Whirlpool	D	-2.87	0.70	STZ	Constellation Brands	A	2.46	0.70