



## Carillon Eagle Growth and Income Fund (HRCVX) - Trend Capture Overlay

January 31, 2018

## Executive Summary

---

### Overview

Superior performance on a consistent basis comes from the ability to be in synchrony with major price trends. The ability to capture a large part of bull trends and to avoid most of the bear trends in individual stocks and sectors can dramatically impact returns across market cycles and deliver superior long term performance. The Trendrating solution is designed to improve this ability by providing intelligent analytics that can complement and enhance the investment decision process and produce tangible results.

We can demonstrate Trendrating's ability to materially influence portfolio performance through a historical overlay of its trend capture model on the actual holdings of a portfolio. Through this analysis we demonstrate that induction can seamlessly integrate into the existing workflow of an investment strategy and have a material impact on the performance of the investment strategy.

Trendrating's trend capture model has the unique ability to identify and score the prevailing price trend of a security with high accuracy. The ability to distinguish between securities based on their respective price trend should be of paramount importance to every portfolio no matter the type of its investment strategy. Every investment manager should infuse the decision making process with information that facilitates the selection of securities whose prices are trending, rather than ones whose price trends are disconnected from their fundamentals.

### Trendrating Model

The Trendrating model assigns each security a directional rating; uptrends (**A** or **B**) and downtrends (**C** or **D**). A continuous absolute rating scale, **Smart Momentum (SM)**, is constructed to facilitate relative ranking of a universe of securities. The discrete rating distinguishes between securities in uptrends and downtrends, whilst the continuous rating allows ranking within the same rating bucket. In tandem, the two rating frameworks facilitate a flexible and robust framework for security selection and portfolio construction.

### Analysis Framework

- Select holdings history for which constituent history is complete and for which there are very few missing periods in the history selected for the analysis
- The universe of stocks in the benchmark associated with the investment fund is used as a buy universe from which to find alternative securities. In absence of a named benchmark, an appropriate buy universe is assigned for the analysis
- In each rebalancing period in the holdings history of the portfolio:
  - Identify all **C** & **D** rated securities
  - Amongst the **C** & **D** rated securities, identify stocks with extreme negative SM scores<sup>1</sup> whilst in a negative price trend, are quite susceptible to sharp upward price swings during and post market shocks. Good risk management practice advocates a robust mechanism for identifying outliers and then implementing a framework of insulating the investment portfolio from their erratic behaviour. In this analysis, we do not alter positions with extreme SM scores
  - Reallocate weight of **C** & **D** rated securities into an **A** or **B** rated security with the highest SM score in the same region/country, industry/sector, and currency<sup>2</sup>
- Returns for the Fund, Trend Capture Portfolio<sup>3</sup>, and Benchmark are price returns calculated from the individual constituent level for each of the three portfolios

---

<sup>1</sup>Our empirical research shows that an SM scores of -2.90 is a valid extreme threshold value

<sup>2</sup>User determined parameters that are relaxed in hierarchal order if no optimal match is found

<sup>3</sup>The portfolio generated as a result of the trend capture overlay on the holdings of the investment fund

## Report Description

- Trend Overlay Summary Data
  - Key info: Provides information on analysis history, fund benchmark, and the analysis rebalancing frequency
  - The two bar charts respectively compare the annual return and annual volatility of the original fund and of the trend capture portfolio
  - The line chart captures the cumulative return of the fund, of the trend capture portfolio, and of the benchmark if applicable
  - Summary Metrics: This table provides key performance and risk metrics of the original fund and of the trend capture portfolio
- Risk-Return Profile
  - Comparative Analysis
    - Annualised Excess Return analysis: The comparisons of the excess return of the trend capture portfolio vs the fund, and if applicable, of the fund vs the benchmark and of the trend capture portfolio vs the benchmark
    - Annualised Tracking Error analysis: The tracking error between the trend capture fund and the original fund captures the magnitude of the differences between the overlay portfolio and the original portfolio. It should be different enough without departing from the original investment strategy. The comparisons of the tracking errors versus the benchmark, if applicable, validates the fact that the overlay strategy does not change the investment mandate
  - Annual Tables
    - The first set of columns tabulate the year by year returns of the trend capture portfolio and its excess return over the original fund and its benchmark
    - The next set of columns present the volatility comparison where the key message is that the volatility of the trend capture portfolio should not differ materially from that of the original fund
    - The third set of results illustrates the reduction in drawdowns that can be achieved through the trend capture overlay. Reduction in downside risk during market declines is perhaps the most important benefit a model can provide
  - TCR Analysis
    - TCR (Trend Capture Rating) is a forward-looking risk metric of an aggregate<sup>4</sup> calculated from the constituent level weights and ratings from the Trendrating model
    - The trend capture overlay should raise the TCR of the original portfolio
    - Portfolios that maintain a higher TCR tend to outperform and periods with higher TCR tend to deliver superior returns
    - Trendrating's recommendation to clients is to endeavour to maintain a high TCR to improve consistency of portfolio returns
- Historical Portfolio Details
  - The top section provides information on the number of number and weight of the **C** & **D** rated constituents that have been switched on a chosen rebalance period<sup>5</sup>
  - Transaction Table: Tabulates all the matched trades performed in the latest rebalancing period and contains the Ticker, Name, Weight, Rating, and Smart Momentum score of each security traded in the given holding period
- Allocation
  - Regional allocation for the latest rebalance period
  - Sector allocation for the latest rebalance period
- Appendix
  - Contains the full history of trades performed in the analysis presented by rebalance period and identifies all trades securities and matched trades

---

<sup>4</sup>Portfolio, Index, Sector etc.

<sup>5</sup>The default is the latest rebalance period

# Trend Overlay Summary

## Key info

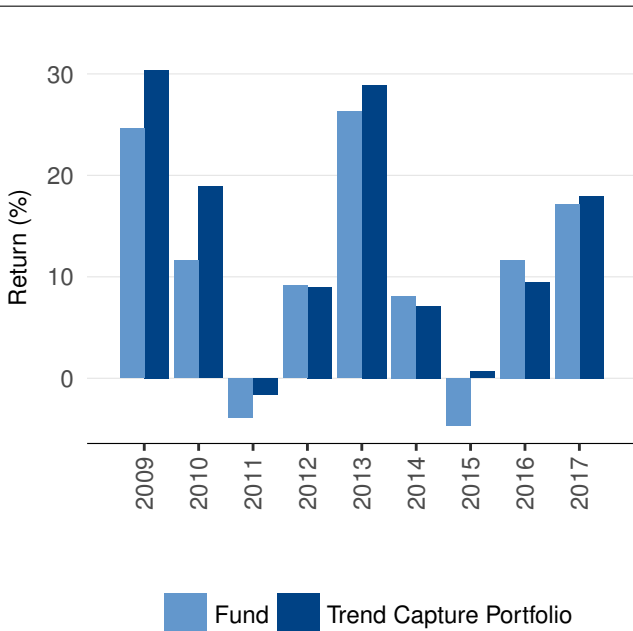
## Data Range

2009-01-01 to 2017-12-29

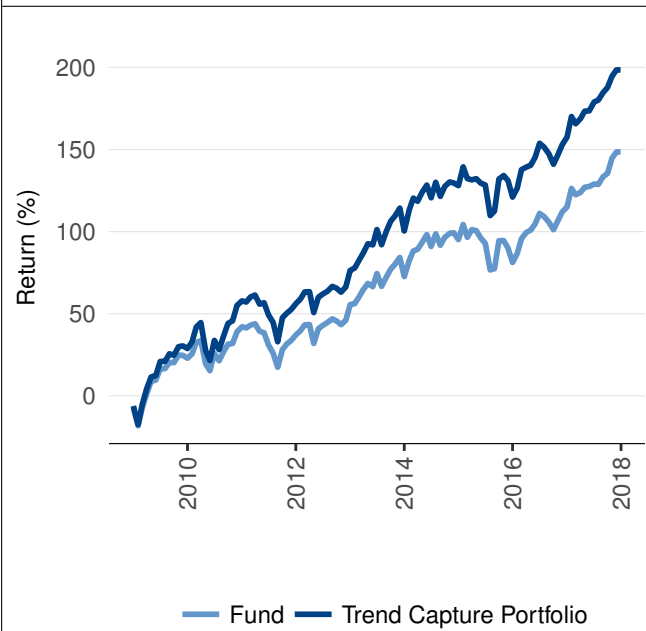
## Rebalancing

Monthly

### Return



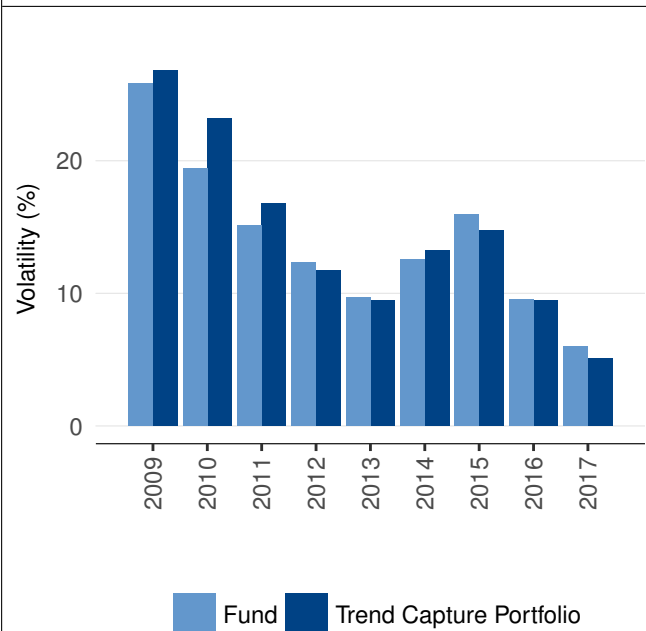
### Cumulative return



## Summary Metrics

	Fund	TC Portfolio	Diff
<b>PERFORMANCE</b>			
Annualised (%)	10.51	12.47	1.96
Monthly Avg (%)	0.92	1.07	0.15
Hit Rate (%)	68.52	68.52	0.00
<b>RISK</b>			
Annualised volatility (%)	15.05	15.26	0.21
Max Drawdown (%)	-18.30	-16.98	1.32
Skewness	-0.32	-0.02	0.30
Kurtosis	1.23	2.28	1.05
<b>KEY RATIOS</b>			
Information Ratio	0.70	0.82	0.12
Sortino Ratio	0.36	0.43	0.08
<b>WEIGHT SWITCHED</b>			
Monthly Avg (%)		11.01	

## Volatility



	Fund	TC Portfolio	Diff	Diff (%)
Cumulative Return (%)	145.84	187.95	42.11	28.88
Avg Drawdown (%)	-5.74	-5.67	0.08	1.35
Avg TCR	B	A		

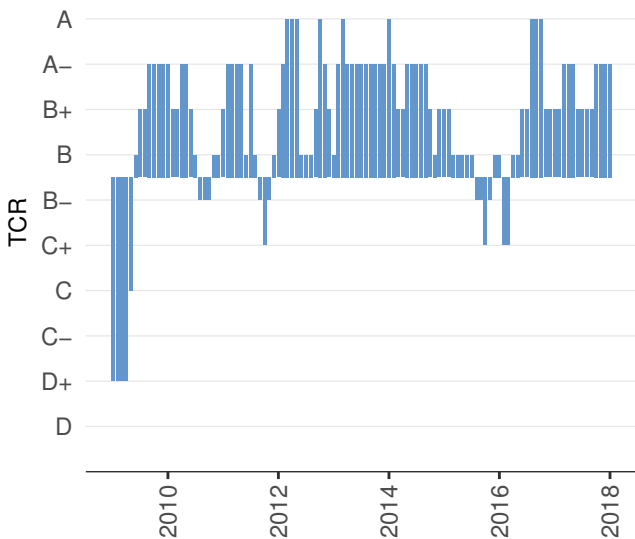
## Risk-Return Profile

### Comparative Analysis

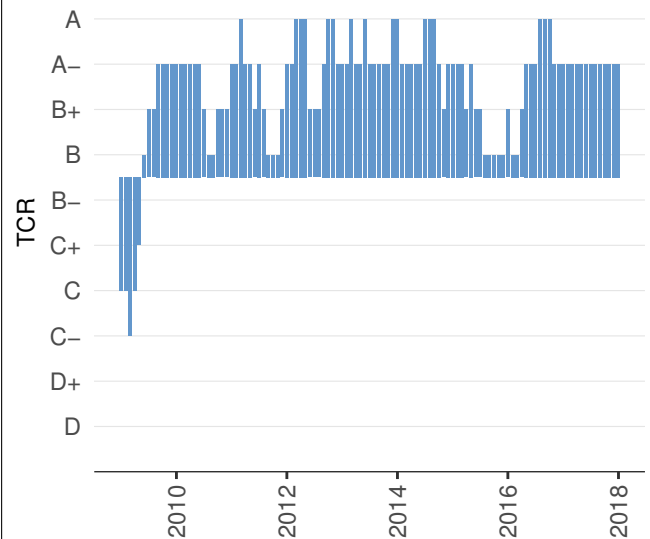
	Fund	Fund
Annualised Excess Return (%)		Annualised Tracking Error (%)
Trend Capture Portfolio	1.80	Trend Capture Portfolio
		2.69

Year	Return (%) TC Port	Excess over Fund	Volatility (%) TC Port	Excess over Fund	Max Drawdown (%) TC Port	Excess over Fund
2017	17.98	0.79	5.07	-0.90	-1.63	0.06
2016	9.48	-2.17	9.43	-0.11	-5.04	-0.34
2015	0.65	5.32	14.76	-1.22	-12.39	1.15
2014	7.13	-1.00	13.21	0.65	-6.51	-0.15
2013	28.90	2.61	9.47	-0.23	-4.61	-0.13
2012	8.99	-0.15	11.76	-0.57	-7.78	0.24
2011	-1.61	2.25	16.79	1.64	-17.64	0.80
2010	18.89	7.30	23.17	3.72	-15.97	-2.34
2009	30.41	5.77	26.85	1.05	-17.56	0.74

### Fund TCR



### Trend Capture Portfolio TCR



## Historical Portfolio Details

Holding period: 2017-12-01 to 2017-12-28

	Fund	TC Port
Number of holdings	37	37
Number of C & D rated holdings - switched	6	-
Weight of C & D rated holdings - switched (%)	10.36	-

## Transaction table

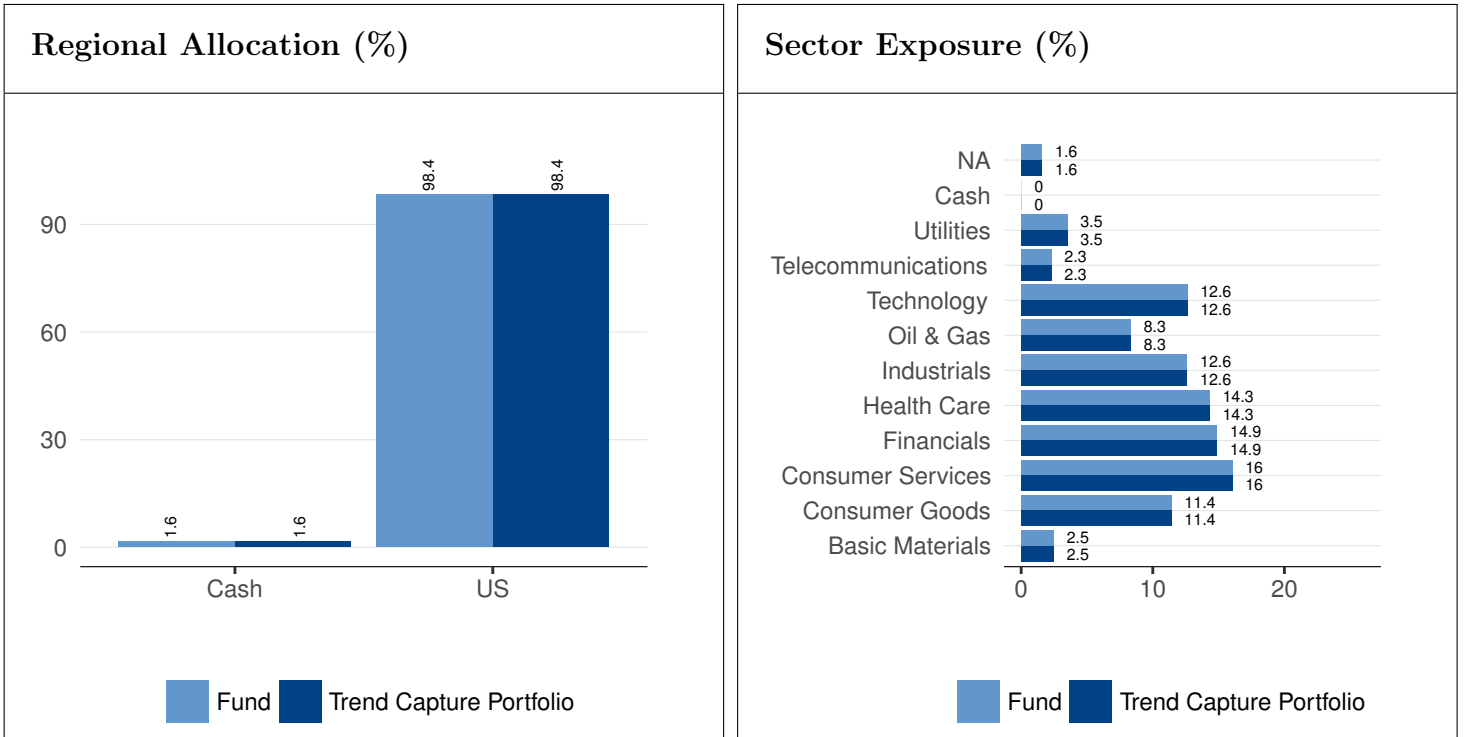
The table shows the fund portfolio C & D rated positions at the beginning of the holding period. These positions have been switched with A and B rated stocks near by mkt cap, market and sector in respect to the original fund positions.

### Switched positions

Ticker	Name	R	SM	W (%)	C (%)	Ticker	Name	R	SM	W (%)	C (%)
SPG	Simon Property	D	-2.88	0.85	0.05	EQIX	Equinix Inc	A	2.36	0.85	-0.03
MDT	Medtronic	C	-1.85	1.68	-0.01	ALGN	Align Technology	A	2.72	1.68	-0.21
MO	Altria	D	-2.85	2.61	0.11	ATVI	Activision Blizzard	A	2.98	2.61	0.06
MRK	Merck & Co	D	-2.86	2.22	0.02	ISRG	Intuitive Surgical	A	2.40	2.22	-0.18
PCG	Pg&e	C	-1.87	1.51	-0.26	NRG	Nrg Energy	A	2.47	1.51	0.03
NLSN	Nielsen	D	-2.86	1.48	0.01	NWSA	News	A	2.26	1.48	0.00

R - Rating, SM - Smart Momentum, W - Weight, C - Contribution to Return

## Allocation



## Appendix

### Switched positions (Fund vs Trend Capture Portfolio)

Date	Ticker	Name	R	SM	W (%)	Ticker	Name	R	SM	W (%)
2009-01-01	AAPL	Apple	D	-2.92	1.70					
2009-01-01	NOKIA	Nokia	D	-2.94	2.80					
2009-01-01	OPAP	Opap Br	D	-2.87	4.10	BMY	Bristol-myers Squibb	A	2.20	4.10
2009-01-01	KKR	Kkr	D	-2.98	0.40					
2009-01-01	388	Hong Kong Exchanges And Clearing	D	-2.95	1.90					
2009-01-01	DELL	Dell	D	-2.93	3.20					
2009-01-01	FITB	Fifth Third Bancorp	D	-2.97	1.40					
2009-01-01	KO	Coca-cola	D	-2.88	3.30	ADM	Archer Daniels Midland	B	1.31	3.30
2009-01-01	BME	Bolsas Y Mercados Espanoles Shmsf	D	-2.94	1.50					
2009-01-01	LLY	Eli Lilly	D	-2.89	4.90	AMGN	Amgen	A	2.24	4.90
2009-01-01	MCD	Mcdonald's	C	-1.84	7.30	FDO	Family Dollar Stores	A	2.27	7.30
2009-01-01	MO	Altria	D	-2.90	1.60	UST	UST Inc	A	2.22	1.60
2009-01-01	MSFT	Microsoft	D	-2.90	3.90	MFE	McAfee	B	1.22	3.90
2009-01-01	CB	Chubb	D	-2.87	3.50	TRV	Travelers Companies	B	1.20	3.50
2009-01-01	T	At&t	D	-2.88	5.70	ROH	Rohm & Haas	A	2.23	5.70
2009-01-01	SY Y	Sysco	D	-2.89	2.60	APOL	Apollo Educat Grp	A	2.29	2.60
2009-01-01	VAR	Varian Medical Systems	D	-2.91	1.40					
2009-01-01	INTC	Intel	D	-2.90	2.60					
2009-01-01	ETR	Entergy	D	-2.89	4.60	PCG	Pg&e	B	1.19	4.60
2009-01-01	TEF	Telefonica	D	-2.89	6.10	FHN	First Horizon National	B	1.36	6.10
2009-01-01	DOX	Amdocs	D	-2.92	2.20					
2009-01-01	GS	Goldman Sachs	D	-2.92	1.90					
2009-01-01	VOD	Vodafone	D	-2.88	2.60	SUN	Sunoco	B	1.30	2.60
2009-01-01	JPM	Jpmorgan Chase	D	-2.89	1.20	CEPH	Cephalon	A	2.22	1.20
2009-01-01	DO	Diamond Offshore Drilling	D	-2.93	2.90					
2009-01-01	LVLT	Level 3 Communications	D	-2.97	3.10					
2009-01-01		Cdn Oil Trust Uts	D	-2.94	2.50					
2009-01-01	CIM	Chimera Investment	D	-2.97	1.70					
2009-01-01	SREN	Swiss Re	D	-2.91	2.60					
2009-01-01	MDLZ	Mondelez International	D	-2.87	1.80	WMT	Wal-mart Stores	A	2.22	1.80
2009-02-02	AAPL	Apple	D	-2.92	2.00					
2009-02-02	NOKIA	Nokia	D	-2.94	2.60					
2009-02-02	KKR	Kkr	D	-2.99	0.30					
2009-02-02	388	Hong Kong Exchanges And Clearing	D	-2.96	1.80					
2009-02-02	DELL	Dell	D	-2.94	3.10					
2009-02-02	FITB	Fifth Third Bancorp	D	-2.99	0.40					
2009-02-02	KO	Coca-cola	D	-2.89	3.30	ADM	Archer Daniels Midland	B	1.30	3.30
2009-02-02	BME	Bolsas Y Mercados Espanoles Shmsf	D	-2.87	1.40	FDO	Family Dollar Stores	A	2.29	1.40
2009-02-02	LLY	Eli Lilly	D	-2.90	4.90	UNH	Unitedhealth	A	2.30	4.90
2009-02-02	MCD	Mcdonald's	C	-1.85	7.30	DRI	Darden Restaurants	B	1.32	7.30
2009-02-02	MO	Altria	D	-2.89	1.90	PHM	Pultegroup	B	1.17	1.90
2009-02-02	MSFT	Microsoft	D	-2.91	3.80					
2009-02-02	CB	Chubb	D	-2.89	3.10	SUN	Sunoco	A	2.30	3.10
2009-02-02	T	At&t	D	-2.90	5.50	QWST	Qwest Communications	B	1.25	5.50
2009-02-02	SY Y	Sysco	D	-2.89	2.80	APOL	Apollo Educat Grp	A	2.33	2.80



Date	Ticker	Name	R	SM	W (%)	Ticker	Name	R	SM	W (%)
2009-02-02	VAR	Varian Medical Systems	D	-2.91	1.60					
2009-02-02	INTC	Intel	D	-2.91	2.60					
2009-02-02	ETR	Entergy	D	-2.90	4.40					
2009-02-02	TEF	Telefonica	D	-2.90	5.70					
2009-02-02	DOX	Amdocs	D	-2.93	2.20					
2009-02-02	GS	Goldman Sachs	D	-2.93	2.10					
2009-02-02	JPM	Jpmorgan Chase	D	-2.92	1.00					
2009-02-02	ORA	Orange	D	-2.86	0.70	AMGN	Amgen	A	2.23	0.70
2009-02-02	DO	Diamond Offshore Drilling	D	-2.93	3.30					
2009-02-02	LVLT	Level 3 Communications	D	-2.96	4.70					
2009-02-02		Cdn Oil Trust Uts	D	-2.94	2.40					
2009-02-02	CIM	Chimera Investment	D	-2.97	1.80					
2009-02-02	SREN	Swiss Re	D	-2.95	1.60					
2009-02-02	MDLZ	Mondelez International	D	-2.87	2.00	TAP	Molson Coors Brewing	B	1.19	2.00
2009-03-02	AAPL	Apple	D	-2.92	2.20					
2009-03-02	NOKIA	Nokia	D	-2.96	2.20					
2009-03-02	KKR	Kkr	D	-2.99	0.30					
2009-03-02	CINF	Cincinnati Financial	D	-2.89	1.00	TRV	Travelers Companies	B	1.16	1.00
2009-03-02	388	Hong Kong Exchanges And Clearing	D	-2.96	1.80					
2009-03-02	DELL	Dell	D	-2.95	3.20					
2009-03-02	FITB	Fifth Third Bancorp	D	-2.99	0.40					
2009-03-02	KO	Coca-cola	D	-2.90	3.60	ADM	Archer Daniels Midland	A	2.28	3.60
2009-03-02	BME	Bolsas Y Mercados Espanoles Shmsf	D	-2.89	1.40	FDO	Family Dollar Stores	A	2.29	1.40
2009-03-02	LLY	Eli Lilly	D	-2.92	4.10					
2009-03-02	MCD	Mcdonald's	C	-1.87	7.50	DRI	Darden Restaurants	B	1.32	7.50
2009-03-02	MO	Altria	D	-2.90	2.00	DHI	D.r. Horton	B	1.23	2.00
2009-03-02	MSFT	Microsoft	D	-2.92	3.90					
2009-03-02	CB	Chubb	D	-2.91	2.90					
2009-03-02	T	At&t	D	-2.91	5.70					
2009-03-02	SYU	Sysco	D	-2.90	2.90					
2009-03-02	VAR	Varian Medical Systems	D	-2.93	1.40					
2009-03-02	INTC	Intel	D	-2.92	2.60					
2009-03-02	ETR	Entergy	D	-2.91	4.40					
2009-03-02	TEF	Telefonica	D	-2.90	6.80	APOL	Apollo Educat Grp	A	2.27	6.80
2009-03-02	DOX	Amdocs	D	-2.93	2.40					
2009-03-02	GS	Goldman Sachs	D	-2.92	2.40					
2009-03-02	JPM	Jpmorgan Chase	D	-2.93	1.00					
2009-03-02	ORA	Orange	D	-2.86	0.80	SUN	Sunoco	A	2.21	0.80
2009-03-02	DO	Diamond Offshore Drilling	D	-2.93	3.50					
2009-03-02	LVLT	Level 3 Communications	D	-2.97	4.10					
2009-03-02		Cdn Oil Trust Uts	D	-2.94	2.60					
2009-03-02	CIM	Chimera Investment	D	-2.98	1.70					
2009-03-02	SREN	Swiss Re	D	-2.98	0.90					
2009-03-02	MDLZ	Mondelez International	D	-2.89	1.80	TAP	Molson Coors Brewing	B	1.17	1.80
2009-04-01	NOKIA	Nokia	D	-2.95	2.10					
2009-04-01	BB	Blackberry	D	-2.94	1.20					
2009-04-01	CS	Axa	D	-2.94	0.40					
2009-04-01	BA	Boeing	D	-2.93	1.20					
2009-04-01	CINF	Cincinnati Financial	D	-2.88	0.60	TRV	Travelers Companies	B	1.18	0.60
2009-04-01	CM-CSA	Comcast	D	-2.90	2.30	IPG	Interpublic Group Of Companies	B	1.28	2.30
2009-04-01	388	Hong Kong Exchanges And Clearing	D	-2.95	1.80					
2009-04-01	DELL	Dell	D	-2.94	2.90					

Date	Ticker	Name	R	SM	W (%)	Ticker	Name	R	SM	W (%)
2009-04-01	FITB	Fifth Third Bancorp	D	-2.99	0.90					
2009-04-01	FITB	Fifth Third Bancorp	D	-2.99	0.80					
2009-04-01	KO	Coca-cola	D	-2.89	3.20	ADM	Archer Daniels Midland	A	2.31	3.20
2009-04-01	BME	Bolsas Y Mercados Espanoles Shmsf	D	-2.85	1.30	NEM	Newmont Mining	A	2.37	1.30
2009-04-01	LLY	Eli Lilly	D	-2.91	4.00					
2009-04-01	MCD	Mcdonald's	D	-2.86	4.50	DRI	Darden Restaurants	A	2.43	4.50
2009-04-01	MSFT	Microsoft	D	-2.90	4.00	JAVA	Sun Microsystems	B	1.47	4.00
2009-04-01	COP	Conocophillips	D	-2.93	1.80					
2009-04-01	CB	Chubb	D	-2.90	3.70	MYL	Mylan N.V.	A	2.39	3.70
2009-04-01	T	At&t	D	-2.89	1.80	S	Sprint Nextel	B	1.48	1.80
2009-04-01	SCHW	Charles Schwab	D	-2.90	2.40					
2009-04-01	TLS	Telstra	D	-2.89	3.50	FDO	Family Dollar Stores	A	2.35	3.50
2009-04-01	ALL	Allstate	D	-2.94	1.30					
2009-04-01	VAR	Varian Medical Systems	D	-2.92	1.20					
2009-04-01	941	China Mobile	D	-2.93	2.30					
2009-04-01	ETR	Entergy	D	-2.91	2.50					
2009-04-01	FP	Total	D	-2.89	1.30	ROH	Rohm & Haas	A	2.29	1.30
2009-04-01	TEF	Telefonica	D	-2.89	4.80	WYE	Wyeth	A	2.24	4.80
2009-04-01	DOX	Amdocs	D	-2.92	3.00					
2009-04-01	VOD	Vodafone	D	-2.86	2.30	AZO	Autozone	A	2.24	2.30
2009-04-01	JPM	Jpmorgan Chase	D	-2.91	2.70					
2009-04-01	ORA	Orange	D	-2.86	0.60	UNH	Unitedhealth	A	2.21	0.60
2009-04-01	DO	Diamond Offshore Drilling	D	-2.93	0.60					
2009-04-01	ENI	Eni	D	-2.91	1.70					
2009-04-01	LVL	Level 3 Communications	D	-2.96	3.80					
2009-04-01	PM	Philip Morris International	D	-2.89	3.20	DHI	D.r. Horton	B	1.28	3.20
2009-04-01	CIM	Chimera Investment	D	-2.97	1.70					
2009-04-01	MDLZ	Mondelez International	D	-2.89	1.20	TSN	Tyson Foods	B	1.37	1.20
2009-05-01	NOKIA	Nokia	D	-2.94	2.30					
2009-05-01	BB	Blackberry	D	-2.90	1.60					
2009-05-01	CS	Axa	D	-2.91	0.50					
2009-05-01	BA	Boeing	D	-2.92	1.20					
2009-05-01	CINF	Cincinnati Financial	D	-2.86	0.50	PGR	Progressive	B	1.26	0.50
2009-05-01	CM-CSA	Comcast	D	-2.88	2.50	IPG	Interpublic Group Of Companies	B	1.40	2.50
2009-05-01	FITB	Fifth Third Bancorp	D	-2.99	1.00					
2009-05-01	FITB	Fifth Third Bancorp	D	-2.99	1.00					
2009-05-01	KO	Coca-cola	D	-2.89	2.80	TSN	Tyson Foods	B	1.40	2.80
2009-05-01	LLY	Eli Lilly	D	-2.91	3.70					
2009-05-01	MCD	Mcdonald's	D	-2.87	3.90	DRI	Darden Restaurants	A	2.44	3.90
2009-05-01	COP	Conocophillips	D	-2.93	1.80					
2009-05-01	T	At&t	D	-2.89	1.60	QWST	Qwest Communications	A	2.31	1.60
2009-05-01	TLS	Telstra	D	-2.88	3.50	F	Ford Motor	A	2.75	3.50
2009-05-01	SY	Sysco	D	-2.83	2.50	AN	Autonation	A	2.69	2.50
2009-05-01	ALL	Allstate	D	-2.93	1.30					
2009-05-01	VAR	Varian Medical Systems	D	-2.91	1.20					
2009-05-01	941	China Mobile	D	-2.93	2.20					
2009-05-01	ETR	Entergy	D	-2.91	2.20					
2009-05-01	FP	Total	D	-2.89	1.20	JAVA	Sun Microsystems	A	2.54	1.20
2009-05-01	TEF	Telefonica	D	-2.90	4.20	DNR	Denbury Resources	A	2.50	4.20
2009-05-01	DOX	Amdocs	D	-2.91	3.10					
2009-05-01	ORA	Orange	D	-2.86	0.50	MU	Micron Technology	A	2.48	0.50
2009-05-01	ENI	Eni	D	-2.90	1.80	MS	Morgan Stanley	A	2.47	1.80
2009-05-01	LVL	Level 3 Communications	D	-2.95	4.20					
2009-05-01	PM	Philip Morris International	D	-2.89	3.00	DHI	D.r. Horton	A	2.35	3.00

Date	Ticker	Name	R	SM	W (%)	Ticker	Name	R	SM	W (%)
2009-05-01	MDLZ	Mondelez International	D	-2.89	1.10	PBG	Pepsi Bottling	B	1.32	1.10
2009-06-01	LLY	Eli Lilly	D	-2.90	3.50					
2009-06-01	COP	Conocophillips	D	-2.92	1.90					
2009-06-01	T	At&t	D	-2.90	1.40	S	Sprint Nextel	A	2.61	1.40
2009-06-01	TLS	Telstra	D	-2.89	3.00	GNW	Genworth Financial	A	3.00	3.00
2009-06-01	SY Y	Sysco	D	-2.83	2.30	AN	Autonation	A	2.67	2.30
2009-06-01	VAR	Varian Medical Systems	D	-2.90	1.30					
2009-06-01	ETR	Entergy	D	-2.90	2.40	AES	Aes	A	2.36	2.40
2009-06-01	GILD	Gilead Sciences	D	-2.86	3.30	CI	Cigna	A	2.44	3.30
2009-06-01	ORA	Orange	D	-2.86	0.50	F	Ford Motor	A	2.81	0.50
2009-06-01	LVLT	Level 3 Communications	D	-2.96	3.80					
2009-06-01	MDLZ	Mondelez International	D	-2.87	1.20	TSN	Tyson Foods	A	2.50	1.20
2009-07-01	CINF	Cincinnati Financial	D	-2.84	0.40	GNW	Genworth Financial	A	3.00	0.40
2009-07-01	LLY	Eli Lilly	D	-2.90	3.30					
2009-07-01	T	At&t	D	-2.90	1.30	S	Sprint Nextel	A	2.56	1.30
2009-07-01	TLS	Telstra	D	-2.88	3.40	F	Ford Motor	A	2.78	3.40
2009-07-01	SY Y	Sysco	D	-2.84	2.00	AN	Autonation	A	2.70	2.00
2009-07-01	VAR	Varian Medical Systems	D	-2.92	1.00					
2009-07-01	VOD	Vodafone	D	-2.85	2.00	WYN	Wyndham Worldwide	A	2.70	2.00
2009-07-01	ORA	Orange	D	-2.87	0.50	IP	International Paper	A	2.62	0.50
2009-08-03	OPAP	Opap Br	D	-2.88	2.40	F	Ford Motor	A	3.00	2.40
2009-08-03	LLY	Eli Lilly	D	-2.90	3.10					
2009-08-03	SY Y	Sysco	D	-2.83	2.00	AN	Autonation	A	2.82	2.00
2009-08-03	VAR	Varian Medical Systems	D	-2.91	1.10					
2009-08-03	FP	Total	C	-1.84	1.10	GNW	Genworth Financial	A	3.00	1.10
2009-08-03	MTU	Mitsubishi Ufj Financial Adr	C	-1.84	2.20	CMA	Comerica	A	2.34	2.20
2009-09-01	NOKIA	Nokia	D	-2.86	1.70	GNW	Genworth Financial	A	3.00	1.70
2009-09-01	OPAP	Opap Br	D	-2.88	2.30	F	Ford Motor	A	2.96	2.30
2009-09-01	LLY	Eli Lilly	D	-2.91	2.90					
2009-09-01	MTU	Mitsubishi Ufj Financial Adr	C	-1.84	2.10	0R01	Citigroup	A	2.74	2.10
2009-10-01	OPAP	Opap Br	D	-2.88	2.50	THC	Tenet Healthcare	A	3.00	2.50
2009-10-01	KEY	Keycorp	D	-2.89	1.00	BAC	Bank Of America	A	2.86	1.00
2009-10-01	LLY	Eli Lilly	D	-2.91	2.90					
2009-10-01	NUF	Nufarm	C	-1.85	1.20	GNW	Genworth Financial	A	3.00	1.20
2009-10-01	MTU	Mitsubishi Ufj Financial Adr	C	-1.88	1.40	0R01	Citigroup	A	2.74	1.40
2009-11-02	NOKIA	Nokia	D	-2.87	1.40	F	Ford Motor	A	3.00	1.40
2009-11-02	OPAP	Opap Br	D	-2.88	2.60	GNW	Genworth Financial	A	3.00	2.60
2009-11-02	KEY	Keycorp	D	-2.90	0.90	BAC	Bank Of America	A	2.78	0.90
2009-11-02	TLS	Telstra	D	-2.85	3.20	WYN	Wyndham Worldwide	A	2.97	3.20
2009-11-02	941	China Mobile	C	-1.87	1.70	IP	International Paper	A	2.92	1.70
2009-11-02	GILD	Gilead Sciences	D	-2.85	3.50	THC	Tenet Healthcare	A	2.98	3.50
2009-11-02	MTU	Mitsubishi Ufj Financial Adr	C	-1.87	1.60	0R01	Citigroup	A	2.65	1.60
2009-12-01	NOKIA	Nokia	D	-2.86	1.40	IP	International Paper	A	3.00	1.40
2009-12-01	OPAP	Opap Br	D	-2.88	2.40	F	Ford Motor	A	3.00	2.40
2009-12-01	KEY	Keycorp	D	-2.89	1.00	BAC	Bank Of America	A	2.84	1.00
2009-12-01	941	China Mobile	C	-1.87	1.60	GNW	Genworth Financial	A	3.00	1.60
2009-12-01	MTU	Mitsubishi Ufj Financial Adr	D	-2.86	1.60	0R01	Citigroup	A	2.67	1.60
2010-01-01	BJ-TOTO	Berjaya Sports Toto	D	-2.85	1.00	IP	International Paper	A	3.00	1.00
2010-01-01	DELL	Dell	C	-1.86	3.40	MU	Micron Technology	A	3.00	3.40
2010-01-01	KEY	Keycorp	D	-2.90	0.90	BAC	Bank Of America	A	2.80	0.90

Date	Ticker	Name	R	SM	W (%)	Ticker	Name	R	SM	W (%)
2010-01-01	941	China Mobile	C	-1.87	1.00	SCN	Prologis	A	3.00	1.00
2010-01-01	NUF	Nufarm	C	-1.85	0.90	F	Ford Motor	A	3.00	0.90
2010-01-01	MTU	Mitsubishi Ufj Financial Adr	D	-2.88	1.10	HBAN	Huntington Bancshares	A	2.60	1.10
2010-01-01	ORA	Orange	C	-1.84	0.70	GNW	Genworth Financial	A	3.00	0.70
2010-01-01	ATLN	Actelion N	C	-1.86	0.90	WYN	Wyndham Worldwide	A	3.00	0.90
2010-02-01	CS	Axa	C	-1.87	1.30	F	Ford Motor	A	3.00	1.30
2010-02-01	BJ-TOTO	Berjaya Sports Toto	D	-2.84	1.00	THC	Tenet Healthcare	A	3.00	1.00
2010-02-01	DELL	Dell	C	-1.87	3.10	MU	Micron Technology	A	2.90	3.10
2010-02-01	ECLP	Eclipsys Corp	C	-1.87	1.80	SNDK	Sandisk Corp	A	2.82	1.80
2010-02-01	CB	Chubb	C	-1.85	2.80	GNW	Genworth Financial	A	3.00	2.80
2010-02-01	MTS	Metcash	C	-1.85	1.50	WYN	Wyndham Worldwide	A	3.00	1.50
2010-02-01	941	China Mobile	C	-1.86	1.00	SCN	Prologis	A	2.95	1.00
2010-02-01	NUF	Nufarm	C	-1.86	0.80	LNC	Lincoln National	A	2.83	0.80
2010-02-01	MTU	Mitsubishi Ufj Financial Adr	D	-2.87	1.20	BAC	Bank Of America	A	2.82	1.20
2010-02-01	JPM	Jpmorgan Chase	C	-1.86	1.90	COF	Capital One Financial	A	2.74	1.90
2010-02-01	ORA	Orange	C	-1.85	0.70	JBL	Jabil Circuit	A	2.81	0.70
2010-02-01	ATLN	Actelion N	C	-1.85	1.00	HBAN	Huntington Bancshares	A	2.80	1.00
2010-02-01	PM	Philip Morris International	C	-1.85	2.40	WHR	Whirlpool	A	2.65	2.40
2010-02-01		Cdn Oil Trust Uts	C	-1.86	0.90	DOW	Dow Chemical	A	2.76	0.90
2010-03-01	CS	Axa	C	-1.87	1.30	F	Ford Motor	A	3.00	1.30
2010-03-01	DELL	Dell	C	-1.87	3.10	SNDK	Sandisk Corp	A	3.00	3.10
2010-03-01	LLY	Eli Lilly	C	-1.85	2.40	THC	Tenet Healthcare	A	2.98	2.40
2010-03-01	ECLP	Eclipsys Corp	C	-1.85	2.10	JDSU	JDS Uniphase Corporation	A	2.85	2.10
2010-03-01	CB	Chubb	C	-1.85	2.80	GNW	Genworth Financial	A	3.00	2.80
2010-03-01	MTS	Metcash	C	-1.85	1.40	WYN	Wyndham Worldwide	A	3.00	1.40
2010-03-01	NUF	Nufarm	C	-1.86	0.80	SCN	Prologis	A	2.94	0.80
2010-03-01	MTU	Mitsubishi Ufj Financial Adr	D	-2.87	1.20	BAC	Bank Of America	A	2.89	1.20
2010-03-01	DO	Diamond Offshore Drilling	C	-1.86	0.70	PXD	Pioneer Natural Resources	A	2.65	0.70
2010-03-01	ATLN	Actelion N	C	-1.88	0.80	LNC	Lincoln National	A	2.85	0.80
2010-03-01	PM	Philip Morris International	C	-1.84	2.50	HAR	Harman Ind Inc	A	2.77	2.50
2010-03-01		Cdn Oil Trust Uts	C	-1.86	0.90	PCLN	The Priceline	A	2.84	0.90
2010-04-01	CS	Axa	C	-1.86	1.10	LNC	Lincoln National	A	3.00	1.10
2010-04-01	LLY	Eli Lilly	C	-1.84	2.00	THC	Tenet Healthcare	A	3.00	2.00
2010-04-01	MTS	Metcash	C	-1.85	1.20	F	Ford Motor	A	3.00	1.20
2010-04-01	TLS	Telstra	D	-2.86	1.90	SNDK	Sandisk Corp	A	3.00	1.90
2010-04-01	MTU	Mitsubishi Ufj Financial Adr	D	-2.87	1.00	BAC	Bank Of America	A	2.96	1.00
2010-04-01	DO	Diamond Offshore Drilling	C	-1.86	1.10	PXD	Pioneer Natural Resources	A	2.81	1.10
2010-04-01	BVMF3	Bmf Bovespa Nm	C	-1.85	0.90	GNW	Genworth Financial	A	3.00	0.90
2010-04-01	ATLN	Actelion N	D	-2.88	0.60	WYN	Wyndham Worldwide	A	3.00	0.60
2010-04-01	XOM	Exxon Mobil	D	-2.85	2.10	FTI	Fmc Technologies	A	2.54	2.10
2010-05-03	LLY	Eli Lilly	C	-1.84	1.90	THC	Tenet Healthcare	A	3.00	1.90
2010-05-03	MTS	Metcash	D	-2.86	1.10	HBAN	Huntington Bancshares	A	3.00	1.10
2010-05-03	TLS	Telstra	D	-2.85	2.00	LNC	Lincoln National	A	3.00	2.00
2010-05-03	FP	Total	C	-1.85	0.70	F	Ford Motor	A	3.00	0.70
2010-05-03	GILD	Gilead Sciences	C	-1.87	1.30	ISRG	Intuitive Surgical	A	2.73	1.30
2010-05-03	DO	Diamond Offshore Drilling	C	-1.88	1.00	PXD	Pioneer Natural Resources	A	2.91	1.00
2010-05-03	ENI	Eni	C	-1.85	0.80	SNDK	Sandisk Corp	A	3.00	0.80
2010-05-03	BVMF3	Bmf Bovespa Nm	C	-1.87	0.80	GNW	Genworth Financial	A	3.00	0.80
2010-05-03	ATLN	Actelion N	D	-2.89	0.60	WYN	Wyndham Worldwide	A	3.00	0.60
2010-05-03	XOM	Exxon Mobil	D	-2.85	2.10	FTI	Fmc Technologies	A	2.56	2.10
2010-05-03	GOOGL	Alphabet	C	-1.86	1.90	JDSU	JDS Uniphase Corporation	A	3.00	1.90

Date	Ticker	Name	R	SM	W (%)	Ticker	Name	R	SM	W (%)
2010-06-01	LLY	Eli Lilly	C	-1.86	2.00	THC	Tenet Healthcare	A	2.87	2.00
2010-06-01	MTS	Metcash	D	-2.86	1.20	F	Ford Motor	A	3.00	1.20
2010-06-01	TLS	Telstra	D	-2.86	2.10	GNW	Genworth Financial	A	3.00	2.10
2010-06-01	FP	Total	C	-1.86	0.70	HBAN	Huntington Bancshares	A	2.97	0.70
2010-06-01	GILD	Gilead Sciences	D	-2.88	1.30	MYL	Mylan N.V.	A	2.55	1.30
2010-06-01	DO	Diamond Offshore Drilling	D	-2.91	0.80					
2010-06-01	ENI	Eni	D	-2.86	0.80	WYNN	Wynn Resorts	A	2.88	0.80
2010-06-01	BVMF3	Bmf Bovespa Nm	C	-1.86	0.90	LNC	Lincoln National	A	2.85	0.90
2010-06-01	ATLN	Actelion N	D	-2.89	0.60	WHR	Whirlpool	A	2.85	0.60
2010-06-01	XOM	Exxon Mobil	D	-2.87	2.00	PXD	Pioneer Natural Resources	A	2.85	2.00
2010-06-01	LVLT	Level 3 Communications	C	-1.88	0.00	QWST	Qwest Communications	A	2.40	0.00
2010-06-01	NOVN	Novartis	C	-1.86	1.80	JWN	Nordstrom	A	2.84	1.80
2010-06-01	GOOGL	Alphabet	C	-1.87	2.00	SNDK	Sandisk Corp	A	3.00	2.00
2010-07-01	AB	Alliancebernstein	C	-1.88	1.90	COF	Capital One Financial	A	2.79	1.90
2010-07-01	388	Hong Kong Exchanges And Clearing	D	-2.87	2.10	F	Ford Motor	A	3.00	2.10
2010-07-01	LLY	Eli Lilly	C	-1.85	1.90	THC	Tenet Healthcare	A	2.80	1.90
2010-07-01	ECLP	Eclipsys Corp	C	-1.86	1.00	SNDK	Sandisk Corp	A	3.00	1.00
2010-07-01	PAYX	Paychex	C	-1.87	2.40	CMI	Cummins	A	2.61	2.40
2010-07-01	X	United States Steel	C	-1.91	1.50					
2010-07-01	TEVA	Teva Pharmaceutical Industries Adr	C	-1.86	2.10	HSP	Hospira	A	2.45	2.10
2010-07-01	ETR	Entergy	D	-2.86	2.40	OKE	Oneok	A	2.39	2.40
2010-07-01	TEF	Telefonica	D	-2.87	1.20	GNW	Genworth Financial	A	3.00	1.20
2010-07-01	VOD	Vodafone	C	-1.85	1.10	WYNN	Wynn Resorts	A	2.82	1.10
2010-07-01	GILD	Gilead Sciences	D	-2.88	2.30	MIL	Millipore	A	2.40	2.30
2010-07-01	USB	Us Bancorp	C	-1.87	2.30	HBAN	Huntington Bancshares	A	2.89	2.30
2010-07-01	ENI	Eni	D	-2.87	1.80	PRU	Prudential Financial	A	2.80	1.80
2010-07-01	BVMF3	Bmf Bovespa Nm	C	-1.86	0.80	LNC	Lincoln National	A	2.79	0.80
2010-07-01	ATLN	Actelion N	D	-2.90	0.50	SCN	Prologis	A	2.75	0.50
2010-07-01	XOM	Exxon Mobil	D	-2.88	1.80	PXD	Pioneer Natural Resources	A	2.81	1.80
2010-07-01	LVLT	Level 3 Communications	D	-2.91	0.00					
2010-07-01	NOVN	Novartis	C	-1.86	2.10	WFM	Whole Foods Market	A	2.72	2.10
2010-07-01	GOOGL	Alphabet	C	-1.88	1.70	JDSU	JDS Uniphase Corporation	A	2.73	1.70
2010-08-02	AB	Alliancebernstein	C	-1.87	1.80	AMP	Ameriprise Financial	A	2.59	1.80
2010-08-02	BAC	Bank Of America	D	-2.88	1.70	HBAN	Huntington Bancshares	A	3.00	1.70
2010-08-02	BJ-TOTO	Berjaya Sports Toto	D	-2.85	0.80	SCN	Prologis	A	2.83	0.80
2010-08-02	388	Hong Kong Exchanges And Clearing	D	-2.86	2.00	WFM	Whole Foods Market	A	2.79	2.00
2010-08-02	DELL	Dell	D	-2.87	3.00	SNDK	Sandisk Corp	A	3.00	3.00
2010-08-02	FITB	Fifth Third Bancorp	C	-1.85	1.10	WYNN	Wynn Resorts	A	2.97	1.10
2010-08-02	FITB	Fifth Third Bancorp	C	-1.85	2.10	WYNN	Wynn Resorts	A	2.97	2.10
2010-08-02	ENEL	Enel	D	-2.85	1.90	DOW	Dow Chemical	A	2.75	1.90
2010-08-02	LLY	Eli Lilly	C	-1.84	1.90	HSP	Hospira	A	2.41	1.90
2010-08-02	ECLP	Eclipsys Corp	C	-1.84	1.00	CRM	Salesforce.com	A	2.77	1.00
2010-08-02	COP	Conocophillips	C	-1.84	1.80	FTI	Fmc Technologies	A	2.53	1.80
2010-08-02	PAYX	Paychex	D	-2.87	2.20	CMI	Cummins	A	2.76	2.20
2010-08-02	SIVB	Svb Financial	C	-1.86	1.80	CMA	Comerica	A	2.53	1.80
2010-08-02	X	United States Steel	C	-1.89	1.60	TIE	Titanium Metals	A	2.92	1.60
2010-08-02	TEVA	Teva Pharmaceutical Industries Adr	C	-1.87	1.90	ESRX	Express Scripts Holding	A	2.35	1.90

Date	Ticker	Name	R	SM	W (%)	Ticker	Name	R	SM	W (%)
2010-08-02	LMT	Lockheed Martin	C	-1.85	1.60	CAT	Caterpillar	A	2.53	1.60
2010-08-02	VOD	Vodafone	C	-1.84	1.10	AFL	Aflac	A	2.74	1.10
2010-08-02	GILD	Gilead Sciences	D	-2.88	2.20	HUM	Humana	A	2.30	2.20
2010-08-02	USB	Us Bancorp	C	-1.86	2.40	MTB	M&t Bank	A	2.49	2.40
2010-08-02	ENI	Eni	D	-2.86	1.80	HST	Host Hotels & Resorts	A	2.73	1.80
2010-08-02	BVMF3	Bmf Bovespa Nm	C	-1.84	0.90	RHT	Red Hat	A	2.69	0.90
2010-08-02	ATLN	Actelion N	D	-2.89	0.50	TSN	Tyson Foods Cameron	A	2.67	0.50
2010-08-02	XOM	Exxon Mobil	D	-2.87	1.80	CAM	International Corp.	A	2.41	1.80
2010-08-02	LVLT	Level 3 Communications	D	-2.89	0.00	PCS	T-Mobile US Inc.	A	2.27	0.00
2010-08-02	NOVN	Novartis	C	-1.86	2.00	STI	Suntrust Banks	A	2.66	2.00
2010-08-02		Cdn Oil Trust Uts	D	-2.86	1.30	DISCA	Discovery Communications	A	2.64	1.30
2010-08-02	GOOGL	Alphabet	C	-1.87	1.70	NTAP	Netapp	A	2.71	1.70
2010-09-01	AB	Alliancebernstein	C	-1.88	1.80	AMP	Ameriprise Financial	A	2.62	1.80
2010-09-01	BAC	Bank Of America	D	-2.89	1.60	HBAN	Huntington Bancshares	A	2.89	1.60
2010-09-01	BJ-TOTO	Berjaya Sports Toto	D	-2.85	0.80	DOW	Dow Chemical	A	2.68	0.80
2010-09-01	DELL	Dell	D	-2.88	2.80	CRM	Salesforce.com	A	2.88	2.80
2010-09-01	FITB	Fifth Third Bancorp	C	-1.87	1.00	WYNN	Wynn Resorts	A	2.89	1.00
2010-09-01	FITB	Fifth Third Bancorp	C	-1.87	1.90	WYNN	Wynn Resorts	A	2.89	1.90
2010-09-01	ENEL	Enel	D	-2.85	2.00	DISCA	Discovery Communications	A	2.63	2.00
2010-09-01	MSFT	Microsoft	D	-2.87	2.60	RHT	Red Hat	A	2.75	2.60
2010-09-01	COP	Conocophillips	C	-1.85	1.80	FTI	Fmc Technologies	A	2.53	1.80
2010-09-01	PAYX	Paychex	D	-2.87	2.30	CMI	Cummins	A	2.75	2.30
2010-09-01	SIVB	Svb Financial	D	-2.87	1.70	MTB	M&t Bank	A	2.48	1.70
2010-09-01	SYX	Sysco	C	-1.85	2.40	WFM	Whole Foods Market	A	2.72	2.40
2010-09-01	X	United States Steel	D	-2.89	1.60	TIE	Titanium Metals	A	2.77	1.60
2010-09-01	TEVA	Pharmaceutical Industries Adr	C	-1.87	2.00	HSP	Hospira	A	2.41	2.00
2010-09-01	LMT	Lockheed Martin	C	-1.87	1.60	CAT	Caterpillar	A	2.51	1.60
2010-09-01	GILD	Gilead Sciences	D	-2.89	2.20	ESRX	Express Scripts Holding	A	2.33	2.20
2010-09-01	JPM	Jpmorgan Chase	D	-2.85	2.50	DFS	Discover Financial Services	A	2.52	2.50
2010-09-01	MCY	Mercury General	C	-1.86	0.10	AFL	Aflac	A	2.72	0.10
2010-09-01	USB	Us Bancorp	C	-1.87	2.20	HST	Host Hotels & Resorts	A	2.67	2.20
2010-09-01	ENI	Eni	D	-2.86	1.90	AMZN	Amazon.com	A	2.63	1.90
2010-09-01	HIG	The Hartford Financial Services	D	-2.88	1.40	TMK	Torchmark	A	2.50	1.40
2010-09-01	XOM	Exxon Mobil	D	-2.87	1.90	HAL	Halliburton	A	2.37	1.90
2010-09-01	LVLT	Level 3 Communications	D	-2.90	0.00	PCS	T-Mobile US Inc.	A	2.28	0.00
2010-09-01	NOVN	Novartis	C	-1.85	2.20	TSN	Tyson Foods	A	2.63	2.20
2010-09-01		Cdn Oil Trust Uts	D	-2.87	1.30	CCE	Coca-Cola Enterprises	A	2.63	1.30
2010-09-01	GOOGL	Alphabet	D	-2.88	1.70	NTAP	Netapp	A	2.67	1.70
2010-10-01	AB	Alliancebernstein	D	-2.87	1.70	AMP	Ameriprise Financial	A	2.64	1.70
2010-10-01	BAC	Bank Of America	D	-2.89	2.30	HBAN	Huntington Bancshares	A	2.93	2.30
2010-10-01	DELL	Dell	D	-2.88	2.40	RHT	Red Hat	A	2.87	2.40
2010-10-01	FITB	Fifth Third Bancorp	C	-1.87	1.00	WYNN	Wynn Resorts	A	2.94	1.00
2010-10-01	FITB	Fifth Third Bancorp	C	-1.87	2.10	WYNN	Wynn Resorts	A	2.94	2.10
2010-10-01	MSFT	Microsoft	D	-2.87	3.00	CRM	Salesforce.com	A	2.85	3.00
2010-10-01	PAYX	Paychex	D	-2.86	2.20	CMI	Cummins	A	2.86	2.20
2010-10-01	SIVB	Svb Financial	D	-2.86	1.80	WFM	Whole Foods Market	A	2.75	1.80
2010-10-01	TLS	Telstra	D	-2.87	1.90	TIE	Titanium Metals	A	2.82	1.90



Date	Ticker	Name	R	SM	W (%)	Ticker	Name	R	SM	W (%)
2010-10-01	TEVA	Teva Pharmaceutical Industries Adr	C	-1.86	2.50	HSP	Hospira	A	2.44	2.50
2010-10-01	INTC	Intel	D	-2.87	2.70	NTAP	Netapp	A	2.78	2.70
2010-10-01	LMT	Lockheed Martin	D	-2.87	2.10	CAT	Caterpillar	A	2.59	2.10
2010-10-01	USB	Us Bancorp	D	-2.87	3.00	DOW	Dow Chemical	A	2.74	3.00
2010-10-01	HIG	The Hartford Financial Services	D	-2.87	2.30	AFL	Aflac	A	2.76	2.30
2010-10-01	XOM	Exxon Mobil	D	-2.86	2.10	FTI	Fmc Technologies	A	2.57	2.10
2010-10-01		Cdn Oil Trust Uts	D	-2.86	2.00	AMZN	Amazon.com	A	2.73	2.00
2010-11-01	AB	Alliancebernstein	D	-2.88	1.50	AMP	Ameriprise Financial	A	2.69	1.50
2010-11-01	BAC	Bank Of America	D	-2.90	1.90					
2010-11-01	PERSON	Pearson	C	-1.85	1.00	WYNN	Wynn Resorts	A	3.00	1.00
2010-11-01	FITB	Fifth Third Bancorp	C	-1.87	1.00	STI	Suntrust Banks	A	2.61	1.00
2010-11-01	FITB	Fifth Third Bancorp	C	-1.87	2.10	STI	Suntrust Banks	A	2.61	2.10
2010-11-01	TLS	Telstra	D	-2.87	1.80	CRM	Salesforce.com	A	2.86	1.80
2010-11-01	SY Y	Sysco	C	-1.84	2.90	WFM	Whole Foods Market	A	2.81	2.90
2010-11-01	X	United States Steel Teva	D	-2.84	2.00	TIE	Titanium Metals	A	2.79	2.00
2010-11-01	TEVA	Pharmaceutical Industries Adr	D	-2.87	2.30	HSP	Hospira	A	2.46	2.30
2010-11-01	INTC	Intel	D	-2.86	2.80	RHT	Red Hat	A	2.90	2.80
2010-11-01	LMT	Lockheed Martin	D	-2.86	2.10	CMI	Cummins	A	2.83	2.10
2010-11-01	JPM	Jpmorgan Chase	D	-2.85	2.50	DFS	Discover Financial Services	A	2.61	2.50
2010-11-01	ENI	Eni	D	-2.84	1.70	NTAP	Netapp	A	2.85	1.70
2010-11-01		Cdn Oil Trust Uts	D	-2.87	1.90	DOW	Dow Chemical	A	2.82	1.90
2010-12-01	AB	Alliancebernstein	D	-2.89	1.50	AMP	Ameriprise Financial	A	2.71	1.50
2010-12-01	BAC	Bank Of America	D	-2.90	1.90					
2010-12-01	PERSON	Pearson	C	-1.85	1.00	CRM	Salesforce.com	A	3.00	1.00
2010-12-01	FITB	Fifth Third Bancorp	C	-1.87	1.00	STI	Suntrust Banks	A	2.60	1.00
2010-12-01	FITB	Fifth Third Bancorp	C	-1.87	2.00	STI	Suntrust Banks	A	2.60	2.00
2010-12-01	KEY	Keycorp	C	-1.86	1.90	WFC	Wells Fargo	B	1.20	1.90
2010-12-01	TLS	Telstra	D	-2.86	1.90	WYNN	Wynn Resorts	A	3.00	1.90
2010-12-01	SY Y	Sysco	C	-1.84	2.80	WFM	Whole Foods Market	A	2.97	2.80
2010-12-01	TEVA	Teva Pharmaceutical Industries Adr	D	-2.87	2.20	HSP	Hospira	A	2.44	2.20
2010-12-01	LMT	Lockheed Martin	D	-2.87	2.00	CMI	Cummins	A	2.94	2.00
2010-12-01	ETR	Entergy	D	-2.85	2.00	TEG	Integrays Energy	A	2.41	2.00
2010-12-01	JPM	Jpmorgan Chase	D	-2.84	2.60	DFS	Discover Financial Services	A	2.64	2.60
2011-01-03	AB	Alliancebernstein	D	-2.88	1.70	AMP	Ameriprise Financial	A	2.80	1.70
2011-01-03	KMB	Kimberly-clark	C	-1.84	1.00	JCI	Johnson Controls	A	2.76	1.00
2011-01-03	TLS	Telstra	D	-2.86	2.10	CRM	Salesforce.com	A	3.00	2.10
2011-01-03	SY Y	Sysco	C	-1.84	2.90	WFM	Whole Foods Market	A	3.00	2.90
2011-01-03	TEVA	Teva Pharmaceutical Industries Adr	D	-2.86	2.40	HSP	Hospira	A	2.43	2.40
2011-01-03	LMT	Lockheed Martin	D	-2.87	2.10	CMI	Cummins	A	3.00	2.10
2011-01-03	ETR	Entergy	D	-2.85	2.00	TEG	Integrays Energy	A	2.41	2.00
2011-02-01	AB	Alliancebernstein	D	-2.89	1.50	AMP	Ameriprise Financial	A	2.85	1.50
2011-02-01	KMB	Kimberly-clark	C	-1.84	1.00	JCI	Johnson Controls	A	2.74	1.00
2011-02-01	LLY	Eli Lilly	D	-2.83	0.50	ESRX	Express Scripts Holding	A	2.44	0.50
2011-02-01	TLS	Telstra	D	-2.86	2.00	CMI	Cummins	A	3.00	2.00
2011-02-01	ETR	Entergy	D	-2.85	2.00	TEG	Integrays Energy	A	2.40	2.00
2011-02-01	NOVN	Novartis	C	-1.85	2.00	WFM	Whole Foods Market	A	3.00	2.00
2011-03-01	AB	Alliancebernstein	D	-2.89	1.60	AMP	Ameriprise Financial	A	2.85	1.60
2011-03-01	LLY	Eli Lilly	D	-2.84	0.50	ESRX	Express Scripts Holding	A	2.42	0.50
2011-03-01	TLS	Telstra	D	-2.86	2.10	WFM	Whole Foods Market	A	3.00	2.10

Date	Ticker	Name	R	SM	W (%)	Ticker	Name	R	SM	W (%)
2011-03-01	ETR	Entergy	D	-2.85	2.00	TEG	Integrays Energy	A	2.41	2.00
2011-03-01	NOVN	Novartis	C	-1.85	2.00	WYNN	Wynn Resorts	A	3.00	2.00
2011-04-01	BAC	Bank Of America	C	-1.85	1.40	STI	Suntrust Banks	A	2.73	1.40
2011-04-01	TLS	Telstra	D	-2.86	1.90	CMI	Cummins	A	3.00	1.90
2011-04-01	SY Y	Sysco	D	-2.85	2.40	WFM	Whole Foods Market	A	3.00	2.40
2011-04-01	NESN	Nestle	D	-2.84	2.10	DOW	Dow Chemical	A	3.00	2.10
2011-04-01	NATU3	Natura Cosmetics	C	-1.84	1.60	CRM	Salesforce.com	A	3.00	1.60
2011-04-01	NOVN	Novartis	D	-2.85	1.70	WYNN	Wynn Resorts	A	3.00	1.70
2011-05-02	BAC	Bank Of America	C	-1.86	1.30	STI	Suntrust Banks	A	2.70	1.30
2011-05-02	FITB	Fifth Third Bancorp	C	-1.86	0.80	CMI	Cummins	A	3.00	0.80
2011-05-02	ENGI	Engie	C	-1.85	1.00	DOW	Dow Chemical	A	3.00	1.00
2011-05-02	X	United States Steel	C	-1.88	1.70	BTU	Peabody Energy Corp	A	2.44	1.70
2011-05-02	TEVA	Teva Pharmaceutical Industries Adr	D	-2.86	2.00	EW	Edwards Lifesciences	A	2.64	2.00
2011-05-02	NATU3	Natura Cosmetics	C	-1.85	1.50	WFM	Whole Foods Market	A	3.00	1.50
2011-05-02	NOVN	Novartis	D	-2.85	1.70	WYNN	Wynn Resorts	A	3.00	1.70
2011-05-02	GOOGL	Alphabet	C	-1.86	2.00	CRM	Salesforce.com	A	3.00	2.00
2011-06-01	ALV	Allianz	C	-1.85	1.00	WYNN	Wynn Resorts	A	3.00	1.00
2011-06-01	BAC	Bank Of America	C	-1.87	1.20	MI	Marshall & Ilsley	A	2.28	1.20
2011-06-01	FITB	Fifth Third Bancorp	C	-1.87	0.80	WFM	Whole Foods Market	A	3.00	0.80
2011-06-01	ENGI	Engie	C	-1.86	1.00	NFLX	Netflix	A	3.00	1.00
2011-06-01	MSFT	Microsoft	D	-2.86	2.70	CRM	Salesforce.com	A	3.00	2.70
2011-06-01	X	United States Steel	C	-1.88	1.70	BTU	Peabody Energy Corp	A	2.39	1.70
2011-06-01	TEVA	Teva Pharmaceutical Industries Adr	D	-2.85	2.20	EW	Edwards Lifesciences	A	2.65	2.20
2011-06-01	ETR	Entergy	D	-2.85	1.70	TEG	Integrays Energy	A	2.43	1.70
2011-06-01	TEF	Telefonica	C	-1.86	1.50	CMG	Chipotle Mexican Grill	A	3.00	1.50
2011-06-01	VOD	Vodafone	C	-1.85	1.30	CMI	Cummins	A	2.94	1.30
2011-06-01	AINV	Apollo Investment	C	-1.87	1.70	DFS	Discover Financial Services	A	2.80	1.70
2011-06-01	NATU3	Natura Cosmetics	C	-1.86	1.40	DOW	Dow Chemical	A	2.93	1.40
2011-06-01	JPM	Jpmorgan Chase	C	-1.85	2.10	AMP	Ameriprise Financial	A	2.79	2.10
2011-06-01	USB	Us Bancorp	C	-1.86	2.80	MTB	M&t Bank	A	2.20	2.80
2011-06-01	ENI	Eni	C	-1.85	1.30	AMZN	Amazon.com	A	2.92	1.30
2011-06-01	HIG	The Hartford Financial Services Och-ziff Capital Management Group Llc	C	-1.86	2.00	TMK	Torchmark	A	2.63	2.00
2011-06-01	OZM	Management Group Llc	C	-1.86	0.70	MCO	Moody's	A	2.35	0.70
2011-06-01	GOOGL	Alphabet	C	-1.86	2.00	NTAP	Netapp	A	2.85	2.00
2011-07-01	CBE	Cooper Industries	C	-1.85	2.60	CMI	Cummins	A	3.00	2.60
2011-07-01	RGC	Regal Entertainment	D	-2.86	2.00	WYNN	Wynn Resorts	A	3.00	2.00
2011-07-01	CTL	Centurylink	C	-1.85	2.70	PCS	T-Mobile US Inc.	A	2.54	2.70
2011-07-01	HD	The Home Depot	C	-1.84	3.30	WFM	Whole Foods Market	A	3.00	3.30
2011-07-01	BMO	Bank Of Montreal	C	-1.84	3.00	CRM	Salesforce.com	A	3.00	3.00
2011-07-01	JPM	Jpmorgan Chase	C	-1.86	2.90	DFS	Discover Financial Services	A	2.90	2.90
2011-08-01	CBE	Cooper Industries	C	-1.87	2.40	CAT	Caterpillar	A	2.76	2.40
2011-08-01	RGC	Regal Entertainment	D	-2.85	2.20	WYNN	Wynn Resorts	A	3.00	2.20
2011-08-01	CTL	Centurylink	C	-1.87	2.60	S	Sprint Nextel	A	2.17	2.60
2011-08-01	DD	E.i. Du Pont De Nemours	C	-1.85	3.20	CF	Cf Industries	A	2.42	3.20
2011-08-01	EMR	Emerson Electric	C	-1.86	3.30	GR	Goodrich	A	2.59	3.30
2011-08-01	HCP	Hcp	C	-1.86	1.10	EQR	Equity Residential	A	2.61	1.10
2011-08-01	HD	The Home Depot	C	-1.85	3.20	AMZN	Amazon.com	A	3.00	3.20
2011-08-01	MRK	Merck & Co	C	-1.85	2.50	EW	Edwards Lifesciences	A	2.52	2.50
2011-08-01	PG	Procter & Gamble	C	-1.85	3.00	RAI	Reynolds American	A	2.36	3.00



Date	Ticker	Name	R	SM	W (%)	Ticker	Name	R	SM	W (%)
2011-08-01	T	At&t	C	-1.85	2.50	CRM	Salesforce.com	A	3.00	2.50
2011-08-01	BMO	Bank Of Montreal	C	-1.84	3.10	WFM	Whole Foods Market	A	3.00	3.10
2011-08-01	PEP	Pepsico	C	-1.85	2.80	MJN	Mead Johnson Nutrition	A	2.45	2.80
2011-08-01	JPM	Jpmorgan Chase	C	-1.86	3.00	DFS	Discover Financial Services	A	2.87	3.00
2011-08-01	HON	Honeywell International	C	-1.86	3.20	UNP	Union Pacific	A	2.50	3.20
2011-09-01	ABT	Abbott Laboratories	C	-1.84	3.20	EW	Edwards Lifesciences	A	2.55	3.20
2011-09-01	CBE	Cooper Industries	C	-1.89	2.10	GR	Goodrich	A	2.55	2.10
2011-09-01	CTL	Centurylink	D	-2.88	2.50	WYNN	Wynn Resorts	A	3.00	2.50
2011-09-01	DD	E.i. Du Pont De Nemours	C	-1.86	3.10	CF	Cf Industries	A	2.49	3.10
2011-09-01	EMR	Emerson Electric	D	-2.87	3.20	UNP	Union Pacific	A	2.45	3.20
2011-09-01	GIS	General Mills	C	-1.84	3.60	MJN	Mead Johnson Nutrition	A	2.45	3.60
2011-09-01	HD	The Home Depot	C	-1.86	3.20	AMZN	Amazon.com	A	3.00	3.20
2011-09-01	MRK	Merck & Co	C	-1.85	2.50	HUM	Humana	A	2.47	2.50
2011-09-01	COP	Conocophillips	C	-1.86	3.10	FTI	Fmc Technologies	A	2.71	3.10
2011-09-01	PFE	Pfizer	C	-1.85	2.60	BIIB	Biogen	A	2.34	2.60
2011-09-01	PG	Procter & Gamble	C	-1.84	3.20	RL	Ralph Lauren	A	2.31	3.20
2011-09-01	T	At&t	C	-1.85	2.50	CMG	Chipotle Mexican Grill	A	3.00	2.50
2011-09-01	SYY	Sysco	C	-1.86	3.20	WFM	Whole Foods Market	A	3.00	3.20
2011-09-01	BMO	Bank Of Montreal	C	-1.84	3.30	CRM	Salesforce.com	A	2.96	3.30
2011-09-01	PEP	Pepsico	C	-1.85	3.00	HRL	Hormel Foods	A	2.36	3.00
2011-09-01	JPM	Jpmorgan Chase	C	-1.87	2.80	DFS	Discover Financial Services	A	2.85	2.80
2011-09-01	HON	Honeywell International	C	-1.87	2.90	BLL	Ball	A	2.42	2.90
2011-09-01	NGG	National Grid Adr	C	-1.84	2.50	NI	Nisource	A	2.45	2.50
2011-09-01	DLR	Digital Realty Trust	C	-1.85	2.60	EQR	Equity Residential	A	2.60	2.60
2011-10-03	ABT	Abbott Laboratories	C	-1.85	3.40	EW	Edwards Lifesciences	A	2.51	3.40
2011-10-03	RGC	Regal Entertainment	D	-2.85	2.40	CMG	Chipotle Mexican Grill	A	3.00	2.40
2011-10-03	CTL	Centurylink	D	-2.89	2.50	CRM	Salesforce.com	A	2.85	2.50
2011-10-03	DD	E.i. Du Pont De Nemours	C	-1.89	2.70	CF	Cf Industries	A	2.33	2.70
2011-10-03	EMR	Emerson Electric	D	-2.88	3.20	GR	Goodrich	A	2.75	3.20
2011-10-03	HCP	Hcp	C	-1.85	1.30	VNO	Vornado Realty Trust	A	2.41	1.30
2011-10-03	HD	The Home Depot	C	-1.86	3.40	AMZN	Amazon.com	A	3.00	3.40
2011-10-03	JNJ	Johnson & Johnson	C	-1.85	3.60	BIIB	Biogen	A	2.32	3.60
2011-10-03	MAT	Mattel	C	-1.85	1.60	RL	Ralph Lauren	A	2.29	1.60
2011-10-03		Minnesota Mng.& Mfg	D	-2.88	3.20	UNP	Union Pacific	A	2.40	3.20
2011-10-03	COP	Conocophillips	C	-1.87	3.10	FTI	Fmc Technologies	A	2.59	3.10
2011-10-03	PFE	Pfizer	C	-1.87	2.40	CEPH	Cephalon	A	2.25	2.40
2011-10-03	PG	Procter & Gamble	C	-1.84	3.60	VFC	Vf	A	2.28	3.60
2011-10-03	BXP	Boston Properties	C	-1.87	1.40	PSA	Public Storage	A	2.37	1.40
2011-10-03	T	At&t	C	-1.85	2.70	AAPL	Apple	A	2.80	2.70
2011-10-03	SYY	Sysco	D	-2.87	3.00	WFM	Whole Foods Market	A	3.00	3.00
2011-10-03	BMO	Bank Of Montreal	D	-2.85	3.10	TWC	Time Warner Cable Inc.	A	2.47	3.10
2011-10-03	CFR	Cullen/frost Bankers	D	-2.88	1.30	TDC	Teradata	A	2.74	1.30
2011-10-03	PEP	Pepsico	D	-2.86	3.00	MJN	Mead Johnson Nutrition	A	2.43	3.00
2011-10-03	JPM	Jpmorgan Chase	D	-2.90	2.20					
2011-10-03	HON	Honeywell International	C	-1.89	2.50	BLL	Ball	A	2.36	2.50
2011-10-03	DLR	Digital Realty Trust	C	-1.86	2.70	KIM	Kimco Realty	A	2.34	2.70
2011-11-01	AMB	Prologis	D	-2.88	1.20	PSA	Public Storage	A	2.44	1.20
2011-11-01	BDX	Becton Dickinson	D	-2.86	2.00	BIIB	Biogen	A	2.41	2.00
2011-11-01	CTL	Centurylink	D	-2.88	2.50	WFM	Whole Foods Market	A	3.00	2.50
2011-11-01	DD	E.i. Du Pont De Nemours	D	-2.86	3.10	CF	Cf Industries	A	2.43	3.10

Date	Ticker	Name	R	SM	W (%)	Ticker	Name	R	SM	W (%)
2011-11-01	EMR	Emerson Electric	D	-2.86	3.50	GR	Goodrich	A	2.77	3.50
2011-11-01	JNJ	Johnson & Johnson	C	-1.84	3.40	ISRG	Intuitive Surgical	A	2.29	3.40
2011-11-01		Minnesota Mng.& Mfg	D	-2.87	3.10	BLL	Ball	A	2.40	3.10
2011-11-01	COP	Conocophillips	C	-1.86	3.20	HAL	Halliburton	A	2.44	3.20
2011-11-01	PFE	Pfizer	C	-1.85	2.40	AGN	Allergan	A	2.24	2.40
2011-11-01	BXP	Boston Properties	C	-1.86	1.50	VTR	Ventas	B	1.19	1.50
2011-11-01	T	At&t	D	-2.84	2.50	CMG	Chipotle Mexican Grill	A	3.00	2.50
2011-11-01	SYU	Sysco	D	-2.86	2.90	AMZN	Amazon.com	A	3.00	2.90
2011-11-01	UTX	United Technologies	D	-2.86	3.00	ACN	Accenture Cl A	A	2.36	3.00
2011-11-01	BMO	Bank Of Montreal	D	-2.84	2.90	TDC	Teradata	A	2.83	2.90
2011-11-01	CFR	Cullen/frost Bankers	D	-2.87	1.30	PBCT	People's United Financial	B	1.18	1.30
2011-11-01	PEP	Pepsico	D	-2.86	2.90	MJN	Mead Johnson Nutrition	A	2.45	2.90
2011-11-01	JPM	Jpmorgan Chase	D	-2.89	2.30	MA	Mastercard	A	2.29	2.30
2011-11-01	HON	Honeywell International	D	-2.86	2.80	GWW	Ww Grainger	A	2.29	2.80
2011-11-01	DLR	Digital Realty Trust	C	-1.84	2.80	AAPL	Apple	A	2.85	2.80
2011-12-01	AMB	Prologis	D	-2.88	1.20	PSA	Public Storage	A	2.45	1.20
2011-12-01	BDX	Becton Dickinson	D	-2.86	1.90	BIIB	Biogen	A	2.42	1.90
2011-12-01	DD	E.i. Du Pont De Nemours	D	-2.86	3.00	PX	Praxair	A	2.21	3.00
2011-12-01	JNJ	Johnson & Johnson	C	-1.84	3.40	ISRG	Intuitive Surgical	A	2.29	3.40
2011-12-01	KO	Coca-cola	C	-1.84	3.00	MJN	Mead Johnson Nutrition	A	2.48	3.00
2011-12-01		Minnesota Mng.& Mfg	D	-2.86	3.20	GR	Goodrich	A	2.77	3.20
2011-12-01	COP	Conocophillips	C	-1.85	3.30	MRO	Marathon Oil	A	2.39	3.30
2011-12-01	BXP	Boston Properties	C	-1.86	1.40	VTR	Ventas	B	1.18	1.40
2011-12-01	UTX	United Technologies	D	-2.86	3.00	ACN	Accenture Cl A	A	2.36	3.00
2011-12-01	BMO	Bank Of Montreal	D	-2.84	2.90	WFM	Whole Foods Market	A	3.00	2.90
2011-12-01	CFR	Cullen/frost Bankers	D	-2.87	1.30	USB	Us Bancorp	A	2.19	1.30
2011-12-01	JPM	Jpmorgan Chase	D	-2.89	2.10	MA	Mastercard	A	2.33	2.10
2012-01-02	BDX	Becton Dickinson	D	-2.86	1.90	BIIB	Biogen	A	2.40	1.90
2012-01-02	KO	Coca-cola	C	-1.84	3.10	MJN	Mead Johnson Nutrition	A	2.44	3.10
2012-01-02		Minnesota Mng.& Mfg	D	-2.86	3.20	GR	Goodrich	A	2.78	3.20
2012-01-02	BXP	Boston Properties	C	-1.85	1.50	PSA	Public Storage	A	2.47	1.50
2012-01-02	UTX	United Technologies	D	-2.87	2.90	ACN	Accenture Cl A	A	2.33	2.90
2012-01-02	BMO	Bank Of Montreal	D	-2.85	2.80	WFM	Whole Foods Market	A	3.00	2.80
2012-01-02	JPM	Jpmorgan Chase	D	-2.88	2.30	MA	Mastercard	A	2.32	2.30
2012-02-01	RGC	Regal Entertainment	C	-1.85	2.20	CMG	Chipotle Mexican Grill	A	3.00	2.20
2012-02-01	NGG	National Grid Adr	C	-1.84	2.50	NI	Nisource	A	2.50	2.50
2012-03-01	RGC	Regal Entertainment	C	-1.84	2.30	CMG	Chipotle Mexican Grill	A	3.00	2.30
2012-04-02	RGC	Regal Entertainment	C	-1.84	2.20	CMG	Chipotle Mexican Grill	A	3.00	2.20
2012-05-01	BDX	Becton Dickinson	C	-1.83	1.70	BIIB	Biogen	A	2.48	1.70
2012-05-01	SYU	Sysco	C	-1.84	2.70	WFM	Whole Foods Market	A	3.00	2.70
2012-06-01	BDX	Becton Dickinson	C	-1.85	1.80	ALXN	Alexion Pharmaceuticals	A	2.89	1.80
2012-06-01	EMR	Emerson Electric	D	-2.86	3.10	GR	Goodrich	A	2.79	3.10
2012-06-01	MCD	Mcdonald's	C	-1.86	2.30	CMG	Chipotle Mexican Grill	A	3.00	2.30
2012-06-01		Minnesota Mng.& Mfg	C	-1.85	3.20	GWW	Ww Grainger	A	2.32	3.20
2012-06-01	NSC	Norfolk Southern	D	-2.86	1.90	ROP	Roper Technologies	A	2.30	1.90
2012-06-01	COP	Conocophillips	D	-2.86	2.90	SUN	Sunoco	A	2.31	2.90
2012-06-01	PG	Procter & Gamble	C	-1.85	3.10	FOSL	Fossil	A	3.00	3.10
2012-06-01	SYU	Sysco	C	-1.85	2.80	WFM	Whole Foods Market	A	3.00	2.80

Date	Ticker	Name	R	SM	W (%)	Ticker	Name	R	SM	W (%)
2012-06-01	UTX	United Technologies	C	-1.86	2.80	CBE	Cooper Industries	A	2.26	2.80
2012-06-01	BMO	Bank Of Montreal	D	-2.85	2.70	AAPL	Apple	A	3.00	2.70
2012-06-01	TOT	Total Adr	D	-2.88	1.70	WMB	Williams Companies	A	2.25	1.70
2012-06-01	CVX	Chevron	C	-1.86	3.60	KMI	Kinder Morgan	A	2.23	3.60
2012-07-02	BDX	Becton Dickinson	C	-1.84	1.70	ALXN	Alexion Pharmaceuticals	A	3.00	1.70
2012-07-02	EMR	Emerson Electric	D	-2.86	2.90	GR	Goodrich	A	2.80	2.90
2012-07-02	MCD	Mcdonald's	C	-1.86	2.10	CMG	Chipotle Mexican Grill	A	3.00	2.10
2012-07-02		Minnesota Mng.& Mfg	C	-1.83	3.20	GWW	Ww Grainger	A	2.32	3.20
2012-07-02	COP	Conocophillips	D	-2.85	3.00	SUN	Sunoco	A	2.32	3.00
2012-07-02	PG	Procter & Gamble	C	-1.85	2.90	PHM	Pultegroup	A	2.51	2.90
2012-07-02	SY Y	Sysco	C	-1.84	2.80	WFM	Whole Foods Market	A	3.00	2.80
2012-07-02	UTX	United Technologies	D	-2.86	2.70	ROP	Roper Technologies	A	2.30	2.70
2012-07-02	BMO	Bank Of Montreal	D	-2.84	2.60	AAPL	Apple	A	3.00	2.60
2012-07-02	TOT	Total Adr	D	-2.87	2.90	WMB	Williams Companies	A	2.25	2.90
2012-07-02	JPM	Jpmorgan Chase	C	-1.87	3.30	MA	Mastercard	A	2.38	3.30
2012-07-02	HON	Honeywell International	C	-1.85	2.70	TXT	Textron	A	2.27	2.70
2012-07-02	CVX	Chevron	C	-1.84	3.70	TSO	Tesoro	A	2.23	3.70
2012-08-01	RGC	Regal Entertainment	C	-1.84	2.20	EXPE	Expedia	A	2.36	2.20
2012-08-01	DD	E.i. Du Pont De Nemours	C	-1.85	2.80	CF	Cf Industries	A	2.25	2.80
2012-08-01	EMR	Emerson Electric	D	-2.85	3.00	GWW	Ww Grainger	A	2.35	3.00
2012-08-01	GSK	Glaxosmithkline Adr	C	-1.84	2.60	ALXN	Alexion Pharmaceuticals	A	3.00	2.60
2012-08-01	MCD	Mcdonald's	C	-1.85	2.10	WYN	Wyndham Worldwide	A	2.32	2.10
2012-08-01	PG	Procter & Gamble	C	-1.84	2.90	PHM	Pultegroup	A	2.52	2.90
2012-08-01	PNC	Pnc Financial Services	C	-1.85	2.90	RF	Regions Financial	A	2.38	2.90
2012-08-01	SY Y	Sysco	C	-1.84	2.70	WFM	Whole Foods Market	A	3.00	2.70
2012-08-01	UTX	United Technologies	D	-2.86	2.60	ROP	Roper Technologies	A	2.31	2.60
2012-08-01	TOT	Total Adr	D	-2.86	2.90	SUN	Sunoco	A	2.32	2.90
2012-08-01	JPM	Jpmorgan Chase	C	-1.87	3.20	MA	Mastercard	A	2.37	3.20
2012-08-01	HON	Honeywell International	C	-1.84	2.80	TXT	Textron	A	2.28	2.80
2012-08-01	NGG	National Grid Adr	C	-1.84	2.40	NI	Nisource	A	2.54	2.40
2012-09-03	RGC	Regal Entertainment	C	-1.84	2.20	EXPE	Expedia	A	2.33	2.20
2012-09-03	DD	E.i. Du Pont De Nemours	C	-1.85	2.80	CF	Cf Industries	A	2.27	2.80
2012-09-03	MCD	Mcdonald's	D	-2.85	2.10	WYN	Wyndham Worldwide	A	2.32	2.10
2012-09-03	PNC	Pnc Financial Services	C	-1.85	3.00	RF	Regions Financial	A	2.38	3.00
2012-09-03	JPM	Jpmorgan Chase	C	-1.87	3.30	MA	Mastercard	A	2.37	3.30
2012-09-03	HON	Honeywell International	C	-1.84	2.80	GWW	Ww Grainger	A	2.35	2.80
2012-10-01	DLR	Digital Realty Trust	C	-1.86	1.40	PSA	Public Storage	A	2.48	1.40
2012-11-01	KO	Coca-cola	C	-1.85	2.90	MJN	Mead Johnson Nutrition	A	2.41	2.90
2012-11-01	NSC	Norfolk Southern	D	-2.86	1.60	GWW	Ww Grainger	A	2.34	1.60
2012-11-01	DLR	Digital Realty Trust	C	-1.87	1.30	WY	Weyerhaeuser	A	2.30	1.30
2012-12-03	AMAT	Applied Materials	D	-2.85	3.10	AKAM	Akamai Technologies	A	2.32	3.10
2012-12-03	DD	E.i. Du Pont De Nemours	D	-2.86	2.40	CF	Cf Industries	A	2.27	2.40
2012-12-03	KO	Coca-cola	C	-1.85	3.00	STZ	Constellation Brands	A	2.33	3.00
2012-12-03	NSC	Norfolk Southern	D	-2.87	1.60	ROP	Roper Technologies	A	2.34	1.60
2012-12-03	PNC	Pnc Financial Services	C	-1.86	2.70	BAC	Bank Of America	A	2.33	2.70

Date	Ticker	Name	R	SM	W (%)	Ticker	Name	R	SM	W (%)
2012-12-03	WFC	Wells Fargo	C	-1.85	2.50	STI	Suntrust Banks	A	2.28	2.50
2012-12-03	PEP	Pepsico	C	-1.84	2.80	BF.B	Brown-forman	A	2.27	2.80
2012-12-03	DLR	Digital Realty Trust	D	-2.86	1.40	WY	Weyerhaeuser	A	2.30	1.40
2013-01-01	DD	E.i. Du Pont De Nemours	D	-2.86	2.50	EMN	Eastman Chemical	A	2.26	2.50
2013-01-01	GSK	Glaxosmithkline Adr	D	-2.85	3.10	ALXN	Alexion Pharmaceuticals	A	2.96	3.10
2013-01-01	KO	Coca-cola	C	-1.85	2.80	STZ	Constellation Brands	A	2.33	2.80
2013-01-01	MCD	Mcdonald's	D	-2.84	2.10	EXPE	Expedia	A	2.40	2.10
2013-01-01	NSC	Norfolk Southern	D	-2.86	1.60	GWW	Ww Grainger	A	2.35	1.60
2013-01-01	PNC	Pnc Financial Services	D	-2.85	1.70	BAC	Bank Of America	A	2.39	1.70
2013-01-01	WFC	Wells Fargo	C	-1.84	3.40	STI	Suntrust Banks	A	2.30	3.40
2013-01-01	PEP	Pepsico	C	-1.84	2.70	HSY	The Hershey	A	2.26	2.70
2013-01-01	STJ	St Jude Medical Inc	D	-2.86	3.30	BIIB	Biogen	A	2.53	3.30
2013-01-01	ACC	American Campus Communities	C	-1.84	1.60	CCI	Crown Castle Intl Corp	A	2.31	1.60
2013-01-01	DLR	Digital Realty Trust	D	-2.86	1.40	WY	Weyerhaeuser	A	2.30	1.40
2013-02-01	DD	E.i. Du Pont De Nemours	D	-2.85	2.50	CF	Cf Industries	A	2.30	2.50
2013-02-01	KO	Coca-cola	C	-1.85	2.70	STZ	Constellation Brands	A	2.30	2.70
2013-02-01	WFC	Wells Fargo	C	-1.84	3.20	BAC	Bank Of America	A	2.39	3.20
2013-03-01	DD	E.i. Du Pont De Nemours	D	-2.85	2.50	LYB	Lyondellbasell Industries	A	2.27	2.50
2013-04-01	AAPL	Apple	D	-2.90	3.90	CSC	Computer Sciences	A	2.36	3.90
2013-04-01	DD	E.i. Du Pont De Nemours	D	-2.84	2.50	PPG	Ppg Industries	A	2.31	2.50
2013-04-01	ACC	American Campus Communities	C	-1.84	1.40	WY	Weyerhaeuser	A	2.34	1.40
2013-05-01	AAPL	Apple	D	-2.90	3.80	CSC	Computer Sciences	A	2.34	3.80
2013-05-01	CTL	Centurylink	D	-2.86	2.00	S	Sprint Nextel	A	2.56	2.00
2013-05-01	COP	Conocophillips	C	-1.84	2.50	FSLR	First Solar	A	2.65	2.50
2013-05-01	TOT	Total Adr	C	-1.85	2.50	TSO	Tesoro	A	2.47	2.50
2013-05-01	ACC	American Campus Communities	C	-1.85	1.30	CCI	Crown Castle Intl Corp	A	2.33	1.30
2013-06-03	AAPL	Apple	D	-2.89	3.90	MU	Micron Technology	A	2.36	3.90
2013-06-03	CTL	Centurylink	D	-2.87	1.80	S	Sprint Nextel	A	2.57	1.80
2013-06-03	TOT	Total Adr	C	-1.85	2.50	FSLR	First Solar	A	2.76	2.50
2013-06-03	ACC	American Campus Communities	D	-2.85	1.20	WY	Weyerhaeuser	A	2.32	1.20
2013-07-01	AAPL	Apple	D	-2.90	3.50	S	Sprint Nextel	A	2.56	1.90
2013-07-01	CTL	Centurylink	D	-2.86	1.90	FSLR	First Solar	A	2.66	2.40
2013-07-01	TOT	Total Adr	C	-1.85	2.40	CCI	Crown Castle Intl Corp	A	2.31	1.20
2013-07-01	ACC	American Campus Communities	D	-2.86	1.20	WY	Weyerhaeuser	A	2.30	2.00
2013-07-01	DLR	Digital Realty Trust	D	-2.86	2.00	WY	Weyerhaeuser	A	2.30	2.00
2013-08-01	AAPL	Apple	D	-2.89	3.80	MU	Micron Technology	A	2.41	3.80
2013-08-01	AMB	Prologis	C	-1.86	1.20	WY	Weyerhaeuser	A	2.30	1.20
2013-08-01	CTL	Centurylink	D	-2.86	1.90	VZ	Verizon Communications	A	2.20	1.90
2013-08-01	SPG	Simon Property	C	-1.85	1.90	AMT	American Tower	A	2.25	1.90
2013-08-01	T	At&t	C	-1.85	2.20	ALXN	Alexion Pharmaceuticals	A	3.00	2.20
2013-08-01	ACC	American Campus Communities	D	-2.87	1.10	PCL	Plum Creek Timber Co	A	2.24	1.10
2013-08-01	DLR	Digital Realty Trust	D	-2.87	1.80	VTR	Ventas	A	2.23	1.80
2013-09-02	AMB	Prologis	C	-1.87	1.20	WY	Weyerhaeuser	A	2.29	1.20
2013-09-02	CTL	Centurylink	D	-2.87	1.80	FTR	Frontier Communications	A	2.19	1.80
2013-09-02	SPG	Simon Property	C	-1.87	1.80	AMT	American Tower	A	2.24	1.80
2013-09-02	HD	The Home Depot	C	-1.85	2.90	NFLX	Netflix	A	2.88	2.90
2013-09-02	KO	Coca-cola	C	-1.85	2.60	STZ	Constellation Brands	A	2.50	2.60
2013-09-02	T	At&t	D	-2.86	2.20	ALXN	Alexion Pharmaceuticals	A	3.00	2.20
2013-09-02	ACC	American Campus Communities	D	-2.88	1.00	VTR	Ventas	A	2.22	1.00
2013-09-02	DLR	Digital Realty Trust	D	-2.87	1.90	VNO	Vornado Realty Trust	A	2.18	1.90

Date	Ticker	Name	R	SM	W (%)	Ticker	Name	R	SM	W (%)
2013-10-01	CTL	Centurylink	D	-2.88	1.60	FTR	Frontier Communications	A	2.19	1.60
2013-10-01	SPG	Simon Property	C	-1.86	1.00	WY	Weyerhaeuser	A	2.31	1.00
2013-10-01	KO	Coca-cola	C	-1.85	2.60	STZ	Constellation Brands	A	2.54	2.60
2013-10-01	MAT	Mattel	C	-1.85	3.00	WHR	Whirlpool	A	2.44	3.00
2013-10-01	T	At&t	D	-2.85	2.20	WIN	Windstream Holdings	B	1.18	2.20
2013-10-01	ACC	American Campus Communities	D	-2.88	1.70	VTR	Ventas	A	2.22	1.70
2013-10-01	DLR	Digital Realty Trust	D	-2.88	1.80	CBG	Cbre	A	2.19	1.80
2013-11-01	CTL	Centurylink	D	-2.87	1.70	FTR	Frontier Communications	A	2.20	1.70
2013-11-01	SPG	Simon Property	D	-2.86	1.00	WY	Weyerhaeuser	A	2.33	1.00
2013-11-01	KO	Coca-cola	C	-1.85	2.60	STZ	Constellation Brands	A	2.61	2.60
2013-11-01	MAT	Mattel	C	-1.84	3.00	WHR	Whirlpool	A	2.45	3.00
2013-11-01	PEP	Pepsico	C	-1.84	2.70	HSY	The Hershey	A	2.36	2.70
2013-11-01	CVX	Chevron	C	-1.85	3.20	PXD	Pioneer Natural Resources	A	2.43	3.20
2013-11-01	ACC	American Campus Communities	D	-2.88	1.70	AMB	Prologis	A	2.19	1.70
2013-11-01	DLR	Digital Realty Trust	D	-2.89	1.50	HST	Host Hotels & Resorts	A	2.19	1.50
2013-12-02	CTL	Centurylink	D	-2.88	1.50	FTR	Frontier Communications	A	2.20	1.50
2013-12-02	SPG	Simon Property	D	-2.86	1.00	WY	Weyerhaeuser	A	2.32	1.00
2013-12-02	CVX	Chevron	C	-1.84	3.20	PXD	Pioneer Natural Resources	A	2.38	3.20
2013-12-02	ACC	American Campus Communities	D	-2.89	1.50	CCI	Crown Castle Intl Corp	A	2.19	1.50
2013-12-02	DLR	Digital Realty Trust	D	-2.89	1.40	HST	Host Hotels & Resorts	A	2.18	1.40
2014-01-01	CVX	Chevron	C	-1.84	3.30	PXD	Pioneer Natural Resources	A	2.39	3.30
2014-01-01	ACC	American Campus Communities	D	-2.89	1.50	WY	Weyerhaeuser	A	2.34	1.50
2014-02-03	SPG	Simon Property	D	-2.84	1.00	WY	Weyerhaeuser	A	2.32	1.00
2014-02-03	GIS	General Mills	C	-1.85	2.10	STZ	Constellation Brands	A	2.70	2.10
2014-02-03	COP	Conocophillips	C	-1.86	2.50	HP	Helmerich & Payne	A	2.37	2.50
2014-02-03	T	At&t	D	-2.85	2.00	FTR	Frontier Communications	A	2.19	2.00
2014-02-03	PEP	Pepsico	C	-1.85	2.60	TSN	Tyson Foods	A	2.40	2.60
2014-02-03	CVX	Chevron	C	-1.86	3.10	EQT	Eq	A	2.35	3.10
2014-02-03	ACC	American Campus Communities	D	-2.88	1.70	CBG	Cbre	A	2.20	1.70
2014-03-03	GIS	General Mills	C	-1.84	2.20	STZ	Constellation Brands	A	2.75	2.20
2014-03-03	MCD	McDonald's	D	-2.85	1.80	TRIP	Tripadvisor	A	2.68	1.80
2014-03-03	OXY	Occidental Petroleum	C	-1.84	3.30	HP	Helmerich & Payne	A	2.42	3.30
2014-03-03	COP	Conocophillips	C	-1.85	2.50	EQT	Eq	A	2.38	2.50
2014-03-03	PG	Procter & Gamble	C	-1.85	2.80	KORS	Michael Kors	A	2.68	2.80
2014-03-03	T	At&t	D	-2.85	1.90	FTR	Frontier Communications	A	2.21	1.90
2014-03-03	PEP	Pepsico	C	-1.85	2.50	TSN	Tyson Foods	A	2.43	2.50
2014-03-03	CVX	Chevron	C	-1.85	3.00	EOG	Eog Resources	A	2.38	3.00
2014-04-01	EMR	Emerson Electric	C	-1.84	2.70	ADS	Alliance Data Systems	A	2.77	2.70
2014-04-01	KO	Coca-cola	D	-2.85	2.40	STZ	Constellation Brands	A	2.79	2.40
2014-04-01	MAT	Mattel	D	-2.86	2.60	KORS	Michael Kors	A	2.66	2.60
2014-04-01	COP	Conocophillips	C	-1.84	2.60	HP	Helmerich & Payne	A	2.46	2.60
2014-04-01	PG	Procter & Gamble	C	-1.84	2.80	MHK	Mohawk Industries	A	2.56	2.80
2014-04-01	PEP	Pepsico	C	-1.84	2.60	TSN	Tyson Foods	A	2.48	2.60
2014-04-01	CVX	Chevron	D	-2.84	3.10	EOG	Eog Resources	A	2.39	3.10
2014-05-01	RGC	Regal Entertainment	C	-1.85	3.20	DAL	Delta Air Lines	A	2.72	3.20
2014-05-01	EMR	Emerson Electric	C	-1.84	2.70	IR	Ingersoll-rand	A	2.49	2.70
2014-05-01	MAT	Mattel	D	-2.86	2.50	KORS	Michael Kors	A	2.64	2.50
2014-06-02	RGC	Regal Entertainment	C	-1.84	3.30	DAL	Delta Air Lines	A	2.79	3.30



Date	Ticker	Name	R	SM	W (%)	Ticker	Name	R	SM	W (%)
2014-06-02	HD	The Home Depot	C	-1.84	2.70	SWY	Safeway Inc	A	2.43	2.70
2014-06-02	MAT	Mattel	D	-2.87	2.40	KORS	Michael Kors	A	2.65	2.40
2014-06-02	PFE	Pfizer	C	-1.85	2.80	BIIB	Biogen	A	3.00	2.80
2014-07-01	HD	The Home Depot	C	-1.84	2.60	SWY	Safeway Inc	A	2.43	2.60
2014-07-01	MAT	Mattel	D	-2.86	2.40	KORS	Michael Kors	A	2.62	2.40
2014-07-01	PFE	Pfizer	C	-1.85	2.70	BIIB	Biogen	A	3.00	2.70
2014-08-01	MAT	Mattel	D	-2.88	2.20	KORS	Michael Kors	A	2.57	2.20
2014-08-01	MCD	Mcdonald's	C	-1.85	1.70	DAL	Delta Air Lines	A	2.73	1.70
2014-08-01	PFE	Pfizer	C	-1.85	2.70	BIIB	Biogen	A	3.00	2.70
2014-08-01	PG	Procter & Gamble	C	-1.84	2.60	WHR	Whirlpool	A	2.44	2.60
2014-09-01	MAT	Mattel	D	-2.88	2.10	KORS	Michael Kors	A	2.55	2.10
2014-09-01	MCD	Mcdonald's	C	-1.85	1.60	LUV	Southwest Airlines	A	2.61	1.60
2014-09-01	PFE	Pfizer	C	-1.85	2.70	BIIB	Biogen	A	3.00	2.70
2014-09-01	T	At&t	C	-1.84	1.90	FTR	Frontier Communications	A	2.30	1.90
2014-10-01	ETN	Eaton	D	-2.87	2.30	URI	United Rentals	A	2.64	2.30
2014-10-01	GIS	General Mills	C	-1.85	2.00	STZ	Constellation Brands	A	2.79	2.00
2014-10-01	MAT	Mattel	D	-2.89	1.90	KORS	Michael Kors	A	2.50	1.90
2014-10-01	MCD	Mcdonald's	D	-2.85	1.70	LUV	Southwest Airlines	A	2.62	1.70
2014-10-01	OXY	Occidental Petroleum	C	-1.85	3.10	HP	Helmerich & Payne	A	2.40	3.10
2014-10-01	PFE	Pfizer	D	-2.85	2.80	BIIB	Biogen	A	3.00	2.80
2014-10-01	STJ	St Jude Medical Inc	C	-1.86	2.90	ALXN	Alexion Pharmaceuticals	A	3.00	2.90
2014-10-01	HON	Honeywell International	C	-1.84	3.10	R	Ryder System	A	2.44	3.10
2014-11-03	AMAT	Applied Materials	C	-1.84	3.80	HPQ	Hewlett-Packard	A	2.51	3.80
2014-11-03	COF	Capital One Financial	C	-1.84	4.00	AMP	Ameriprise Financial	A	2.56	4.00
2014-11-03	ETN	Eaton	D	-2.86	2.40	URI	United Rentals	A	2.68	2.40
2014-11-03	MAT	Mattel	D	-2.89	1.90	WHR	Whirlpool	A	2.52	1.90
2014-11-03	MCD	Mcdonald's	D	-2.85	1.60	LUV	Southwest Airlines	A	2.68	1.60
2014-11-03	OXY	Occidental Petroleum	C	-1.86	2.80	HP	Helmerich & Payne	A	2.36	2.80
2014-11-03	COP	Conocophillips	C	-1.86	3.00	WMB	Williams Companies	A	2.28	3.00
2014-11-03	PNC	Pnc Financial Services	C	-1.84	3.10	MTB	M&t Bank	A	2.30	3.10
2014-11-03	T	At&t	D	-2.84	1.90	FTR	Frontier Communications	A	2.28	1.90
2014-11-03	UTX	United Technologies	D	-2.85	2.70	LMT	Lockheed Martin	A	2.47	2.70
2014-11-03	STJ	St Jude Medical Inc	C	-1.85	3.00	BIIB	Biogen	A	3.00	3.00
2014-11-03	HON	Honeywell International	C	-1.84	3.10	CTAS	Cintas	A	2.45	3.10
2014-11-03	CVX	Chevron	D	-2.86	2.80	TSO	Tesoro	A	2.26	2.80
2014-11-03	ACC	American Campus Communities	C	-1.84	1.70	ESS	Essex Property Trust	A	2.24	1.70
2014-12-01	ETN	Eaton	D	-2.86	2.30	URI	United Rentals	A	2.65	2.30
2014-12-01	GIS	General Mills	C	-1.84	2.00	GMCR	Keurig Green Mountain	A	2.40	2.00
2014-12-01	MAT	Mattel	D	-2.89	1.80	WHR	Whirlpool	A	2.56	1.80
2014-12-01	OXY	Occidental Petroleum	D	-2.87	2.50	HP	Helmerich & Payne	A	2.29	2.50
2014-12-01	COP	Conocophillips	C	-1.87	2.80	TSO	Tesoro	A	2.26	2.80
2014-12-01	CVX	Chevron	D	-2.86	2.70	KMI	Kinder Morgan	A	2.22	2.70
2014-12-01	ACC	American Campus Communities	C	-1.84	1.70	AMT	American Tower	A	2.25	1.70
2015-01-01	ETN	Eaton	D	-2.86	2.30	URI	United Rentals	A	2.62	2.30
2015-01-01	MAT	Mattel	D	-2.89	1.80	WHR	Whirlpool	A	2.59	1.80
2015-01-01	OXY	Occidental Petroleum	D	-2.87	2.50	TSO	Tesoro	A	2.26	2.50
2015-01-01	COP	Conocophillips	C	-1.87	2.80	KMI	Kinder Morgan	A	2.23	2.80
2015-01-01	BMO	Bank Of Montreal	C	-1.84	3.60	BIIB	Biogen	A	3.00	3.60
2015-01-01	TOT	Total Adr	D	-2.88	2.10	MPC	Marathon Petroleum	A	2.20	2.10
2015-01-01	CVX	Chevron	D	-2.86	2.60	APC	Anadarko Petroleum	A	2.17	2.60
2015-02-02	MAT	Mattel	D	-2.90	1.70					
2015-02-02	MSFT	Microsoft	C	-1.86	3.70	HPQ	Hewlett-Packard	A	2.52	3.70
2015-02-02	OXY	Occidental Petroleum	D	-2.87	2.50	TSO	Tesoro	A	2.29	2.50
2015-02-02	COP	Conocophillips	C	-1.87	2.80	KMI	Kinder Morgan	A	2.22	2.80

Date	Ticker	Name	R	SM	W (%)	Ticker	Name	R	SM	W (%)
2015-02-02	BMO	Bank Of Montreal	C	-1.86	3.30	BIIB	Biogen	A	3.00	3.30
2015-02-02	TOT	Total Adr	D	-2.88	2.20	MPC	Marathon Petroleum	A	2.21	2.20
2015-02-02	CVX	Chevron	D	-2.87	2.50	VLO	Valero Energy	B	1.21	2.50
2015-02-02	LYB	Lyondellbasell Industries	D	-2.88	3.10	SIAL	Sigma Aldrich	A	2.34	3.10
2015-03-02	KO	Coca-cola	C	-1.84	2.40	MNST	Monster Beverage	A	2.46	2.40
2015-03-02	MAT	Mattel	D	-2.91	1.50					
2015-03-02	MSFT	Microsoft	C	-1.85	3.70	AVGO	Avago Technologies	A	2.63	3.70
2015-03-02	OXY	Occidental Petroleum	D	-2.88	2.30	TSO	Tesoro	A	2.32	2.30
2015-03-02	COP	Conocophillips	D	-2.88	2.60	MPC	Marathon Petroleum	A	2.22	2.60
2015-03-02	T	At&t	D	-2.84	1.90	LVL	Level 3 Communications	A	2.42	1.90
2015-03-02	BMO	Bank Of Montreal	C	-1.85	3.30	BIIB	Biogen	A	3.00	3.30
2015-03-02	TOT	Total Adr	D	-2.88	2.10	VLO	Valero Energy	A	2.22	2.10
2015-03-02	CVX	Chevron	D	-2.87	2.40	KMI	Kinder Morgan	A	2.22	2.40
2015-03-02	LYB	Lyondellbasell Industries	D	-2.87	3.10	SIAL	Sigma Aldrich	A	2.34	3.10
2015-04-01	KO	Coca-cola	C	-1.85	2.40	MNST	Monster Beverage	A	2.44	2.40
2015-04-01	MSFT	Microsoft	C	-1.86	3.60	AVGO	Avago Technologies	A	2.61	3.60
2015-04-01	OXY	Occidental Petroleum	D	-2.88	2.30	TSO	Tesoro	A	2.32	2.30
2015-04-01	COP	Conocophillips	D	-2.88	2.60	VLO	Valero Energy	A	2.24	2.60
2015-04-01	T	At&t	D	-2.85	1.90	LVL	Level 3 Communications	A	2.42	1.90
2015-04-01	SY	Sysco	C	-1.85	2.50	CVS	Cvs Health	A	2.53	2.50
2015-04-01	BMO	Bank Of Montreal	C	-1.85	3.40	ALXN	Alexion Pharmaceuticals	A	3.00	3.40
2015-04-01	TOT	Total Adr	D	-2.89	2.10	KMI	Kinder Morgan	A	2.23	2.10
2015-04-01	STJ	St Jude Medical Inc	C	-1.84	3.00	BIIB	Biogen	A	3.00	3.00
2015-04-01	CVX	Chevron	D	-2.87	2.50	MPC	Marathon Petroleum	A	2.22	2.50
2015-04-01	LYB	Lyondellbasell Industries	D	-2.87	3.30	SIAL	Sigma Aldrich	A	2.34	3.30
2015-05-01	AMB	Prologis	C	-1.86	1.40	ESS	Essex Property Trust	A	2.26	1.40
2015-05-01	KO	Coca-cola	D	-2.85	2.30	MNST	Monster Beverage	A	2.46	2.30
2015-05-01	COP	Conocophillips	D	-2.87	2.80	TSO	Tesoro	A	2.32	2.80
2015-05-01	SY	Sysco	C	-1.85	2.40	CVS	Cvs Health	A	2.52	2.40
2015-05-01	BMO	Bank Of Montreal	C	-1.85	3.50	BIIB	Biogen	A	3.00	3.50
2015-05-01	PEP	Pepsico	C	-1.84	2.70	HRL	Hormel Foods	A	2.32	2.70
2015-05-01	CVX	Chevron	D	-2.87	2.50	NFX	Newfield Exploration	A	2.29	2.50
2015-05-01	UPS	United Parcel Service	D	-2.85	3.00	CTAS	Cintas	A	2.50	3.00
2015-05-01	ACC	American Campus Communities	C	-1.85	1.70	AIV	Apartment Investment & Management	A	2.25	1.70
2015-05-01	LYB	Lyondellbasell Industries	D	-2.85	3.80	SIAL	Sigma Aldrich	A	2.34	3.80
2015-06-01	AMB	Prologis	C	-1.86	1.30	ESS	Essex Property Trust	A	2.27	1.30
2015-06-01	AMAT	Applied Materials	D	-2.87	3.40	AVGO	Avago Technologies	A	2.72	3.40
2015-06-01	RGC	Regal Entertainment	C	-1.86	3.40	EXPE	Expedia	A	2.37	3.40
2015-06-01	DD	E.i. Du Pont De Nemours	C	-1.85	2.50	SIAL	Sigma Aldrich	A	2.34	2.50
2015-06-01	SPG	Simon Property	C	-1.85	1.10	AIV	Apartment Investment & Management	A	2.25	1.10
2015-06-01	KO	Coca-cola	D	-2.85	2.30	MNST	Monster Beverage	A	2.41	2.30
2015-06-01	OXY	Occidental Petroleum	D	-2.84	2.40	TSO	Tesoro	A	2.31	2.40
2015-06-01	COP	Conocophillips	D	-2.88	2.60	NFX	Newfield Exploration	A	2.27	2.60
2015-06-01	SY	Sysco	C	-1.85	2.40	CVS	Cvs Health	A	2.53	2.40
2015-06-01	BMO	Bank Of Montreal	C	-1.85	3.40	BIIB	Biogen	A	3.00	3.40
2015-06-01	TOT	Total Adr	D	-2.85	2.10	MPC	Marathon Petroleum	A	2.23	2.10

Date	Ticker	Name	R	SM	W (%)	Ticker	Name	R	SM	W (%)
2015-06-01	PEP	Pepsico	C	-1.84	2.70	HRL	Hormel Foods	A	2.33	2.70
2015-06-01	CVX	Chevron	D	-2.87	2.40	PSX	Phillips 66	A	2.22	2.40
2015-06-01	UPS	United Parcel Service	D	-2.85	3.00	CTAS	Cintas	A	2.54	3.00
2015-06-01	ACC	American Campus Communities	C	-1.85	1.70	MAC	Macerich	A	2.25	1.70
2015-07-01	AMB	Prologis	D	-2.87	1.30	MAC	Macerich	A	2.23	1.30
2015-07-01	AMAT	Applied Materials	D	-2.87	3.30	AVGO	Avago Technologies	A	2.66	3.30
2015-07-01	RGC	Regal Entertainment	C	-1.86	3.50	EXPE	Expedia	A	2.37	3.50
2015-07-01	DD	E.i. Du Pont De Nemours	C	-1.87	2.30	SIAL	Sigma Aldrich	A	2.35	2.30
2015-07-01	SPG	Simon Property	C	-1.86	1.10	CBG	Cbre	A	2.23	1.10
2015-07-01	KO	Coca-cola	D	-2.85	2.30	HRL	Hormel Foods	A	2.33	2.30
2015-07-01	OXY	Occidental Petroleum	D	-2.84	2.40	TSO	Tesoro	A	2.31	2.40
2015-07-01	COP	Conocophillips	D	-2.88	2.50	NFX	Newfield Exploration	A	2.26	2.50
2015-07-01	PG	Procter & Gamble	D	-2.86	2.70	HBI	Hanesbrands	A	3.00	2.70
2015-07-01	SY Y	Sysco	C	-1.85	2.40	CVS	Cvs Health	A	2.55	2.40
2015-07-01	UNP	Union Pacific	C	-1.87	2.90	CTAS	Cintas	A	2.53	2.90
2015-07-01	BMO	Bank Of Montreal	C	-1.86	3.40	BIIB	Biogen	A	3.00	3.40
2015-07-01	PEP	Pepsico	C	-1.84	2.70	KFT	Kraft Foods	A	2.27	2.70
2015-07-01	CVX	Chevron	D	-2.88	2.30	VLO	Valero Energy	A	2.24	2.30
2015-07-01	ACC	American Campus Communities	C	-1.86	1.60	PSA	Public Storage	A	2.21	1.60
2015-08-03	AAPL	Apple	C	-1.85	4.40	AVGO	Avago Technologies	A	2.61	4.40
2015-08-03	AMB	Prologis	D	-2.86	1.40	MAC	Macerich	A	2.24	1.40
2015-08-03	AMAT	Applied Materials	D	-2.89	3.00	CSC	Computer Sciences	A	2.48	3.00
2015-08-03	RGC	Regal Entertainment	C	-1.86	3.40	EXPE	Expedia	A	2.43	3.40
2015-08-03	DD	E.i. Du Pont De Nemours	D	-2.88	2.10	SIAL	Sigma Aldrich	A	2.35	2.10
2015-08-03	SPG	Simon Property	C	-1.85	1.20	CBG	Cbre	A	2.23	1.20
2015-08-03	ETN	Eaton	C	-1.86	2.10	FISV	Fiserv	A	2.54	2.10
2015-08-03	MSFT	Microsoft	C	-1.84	4.20	LRCX	Lam Research	A	2.40	4.20
2015-08-03	OXY	Occidental Petroleum	D	-2.85	2.20	TSO	Tesoro	A	2.34	2.20
2015-08-03	COP	Conocophillips	D	-2.90	2.10	SNA	Snap-on	A	2.57	2.60
2015-08-03	PG	Procter & Gamble	D	-2.86	2.60	CVS	Cvs Health	A	2.59	2.40
2015-08-03	SY Y	Sysco	D	-2.85	2.40	CTAS	Cintas	A	2.53	2.90
2015-08-03	UNP	Union Pacific	D	-2.87	2.90	NI	Nisource	A	3.00	3.40
2015-08-03	BMO	Bank Of Montreal	D	-2.86	3.40	VLO	Valero Energy	A	2.24	2.10
2015-08-03	TOT	Total Adr	D	-2.84	2.10	MPC	Marathon Petroleum	A	2.23	2.10
2015-08-03	CVX	Chevron	D	-2.89	2.10	PSA	Public Storage	A	2.23	1.60
2015-08-03	ACC	American Campus Communities	C	-1.86	1.60	LRCX	Lam Research	A	2.37	4.40
2015-09-01	AAPL	Apple	C	-1.87	4.40	MAC	Macerich	A	2.22	1.40
2015-09-01	AMB	Prologis	D	-2.85	1.40	BRCM	Broadcom Corp	A	2.33	2.90
2015-09-01	AMAT	Applied Materials	D	-2.90	2.90	EXPE	Expedia	A	2.38	3.40
2015-09-01	RGC	Regal Entertainment	D	-2.87	3.40	SIAL	Sigma Aldrich	A	2.35	2.10
2015-09-01	DD	E.i. Du Pont De Nemours	D	-2.89	2.10	CTAS	Cintas	A	2.52	2.10
2015-09-01	ETN	Eaton	D	-2.88	2.10	BIIB	Biogen	A	3.00	3.80
2015-09-01	MRK	Merck & Co	D	-2.86	3.80	FB	Facebook	A	2.26	4.10
2015-09-01	MSFT	Microsoft	C	-1.86	4.10	TSO	Tesoro	A	2.32	2.40
2015-09-01	OXY	Occidental Petroleum	D	-2.85	2.40	SNA	Snap-on	A	2.54	2.50
2015-09-01	COP	Conocophillips	D	-2.91	2.20	FISV	Fiserv	A	2.51	2.80
2015-09-01	PG	Procter & Gamble	D	-2.88	2.50	NOC	Northrop Grumman	A	2.41	2.50
2015-09-01	UNP	Union Pacific	D	-2.89	2.80	NI	Nisource	A	3.00	3.50
2015-09-01	UTX	United Technologies	D	-2.88	2.50	CAM	Cameron International Corp.	A	2.26	2.10
2015-09-01	BMO	Bank Of Montreal	D	-2.87	3.50	PSA	Public Storage	A	2.22	1.60
2015-09-01	TOT	Total Adr	D	-2.85	2.10	BRCM	Broadcom Corp	A	2.34	4.30
2015-09-01	CVX	Chevron	D	-2.90	2.10					
2015-09-01	ACC	American Campus Communities	D	-2.88	1.60					
2015-10-01	AAPL	Apple	C	-1.86	4.30					



Date	Ticker	Name	R	SM	W (%)	Ticker	Name	R	SM	W (%)
2015-10-01	AMB	Prologis	D	-2.85	1.50	PSA	Public Storage	A	2.24	1.50
2015-10-01	AMAT	Applied Materials	D	-2.90	2.80					
2015-10-01	RGC	Regal Entertainment	D	-2.87	4.20	EXPE	Expedia	A	2.42	4.20
2015-10-01	DD	E.i. Du Pont De Nemours	D	-2.89	1.90	SIAL	Sigma Aldrich	A	2.34	1.90
2015-10-01	JNJ	Johnson & Johnson	D	-2.85	3.30	BIIB	Biogen	A	3.00	3.30
2015-10-01		Minnesota Mng.& Mfg	D	-2.86	3.80	FISV	Fiserv	A	2.54	3.80
2015-10-01	MRK	Merck & Co	D	-2.87	3.50	ALXN	Alexion Pharmaceuticals	A	3.00	3.50
2015-10-01	MSFT	Microsoft	C	-1.85	4.40	FB	Facebook	A	2.27	4.40
2015-10-01	OXY	Occidental Petroleum	D	-2.86	2.30	TSO	Tesoro	A	2.35	2.30
2015-10-01	COP	Conocophillips	D	-2.91	2.20					
2015-10-01	PG	Procter & Gamble	D	-2.87	2.70	EA	Electronic Arts	A	2.53	2.70
2015-10-01	T	At&t	D	-2.85	2.10	DLPH	Delphi Automotive	A	2.66	2.10
2015-10-01	UNP	Union Pacific	D	-2.88	2.90	CTAS	Cintas	A	2.53	2.90
2015-10-01	UTX	United Technologies	D	-2.88	2.40	NOC	Northrop Grumman	A	2.43	2.40
2015-10-01	WFC	Wells Fargo	C	-1.85	3.50	HBAN	Huntington Bancshares	A	2.19	3.50
2015-10-01	SRE	Sempra Energy	D	-2.86	2.10	NI	Nisource Cameron	A	3.00	2.10
2015-10-01	TOT	Total Adr	D	-2.86	2.10	CAM	International Corp.	A	2.24	2.10
2015-10-01	JPM	Jpmorgan Chase	C	-1.85	2.30	EFX	Equifax	A	2.55	2.30
2015-10-01	STJ	St Jude Medical Inc	C	-1.86	3.20	ACT	Actavis	A	2.80	3.20
2015-10-01	CVX	Chevron	D	-2.90	2.10					
2015-11-02	AAPL	Apple	C	-1.85	4.30	BRCM	Broadcom Corp	A	2.35	4.30
2015-11-02	ABT	Abbott Laboratories	D	-2.85	3.40	HSIC	Henry Schein	A	2.50	3.40
2015-11-02	CPT	Camden Property Trust	D	-2.84	1.50	PSA	Public Storage	A	2.26	1.50
2015-11-02	AMAT	Applied Materials	D	-2.89	2.90	FB	Facebook	A	2.30	2.90
2015-11-02	RGC	Regal Entertainment	D	-2.86	4.10	EXPE	Expedia	A	2.47	4.10
2015-11-02	MRK	Merck & Co	D	-2.85	3.60	HUM	Humana	A	2.47	3.60
2015-11-02	COP	Conocophillips	D	-2.89	2.30	TSO	Tesoro	A	2.39	2.30
2015-11-02	PG	Procter & Gamble	D	-2.86	2.60	SNA	Snap-on	A	2.58	2.60
2015-11-02	T	At&t	D	-2.85	2.00	FTR	Frontier Communications	B	1.19	2.00
2015-11-02	UNP	Union Pacific	D	-2.88	2.60	FISV	Fiserv	A	2.60	2.60
2015-11-02	UTX	United Technologies	D	-2.87	2.50	CTAS	Cintas	A	2.58	2.50
2015-11-02	WFC	Wells Fargo	D	-2.84	3.40	HBAN	Huntington Bancshares	A	2.20	3.40
2015-11-02	JPM	Jpmorgan Chase	C	-1.84	2.30	EFX	Equifax	A	2.61	2.30
2015-11-02	STJ	St Jude Medical Inc	C	-1.86	3.00	EW	Edwards Lifesciences	A	2.41	3.00
2015-11-02	CVX	Chevron	D	-2.88	2.30	CAM	Cameron International Corp.	A	2.27	2.30
2015-12-01	AAPL	Apple	C	-1.85	4.20	BRCM	Broadcom Corp	A	2.37	4.20
2015-12-01	ABT	Abbott Laboratories	D	-2.85	3.40	HSIC	Henry Schein	A	2.52	3.40
2015-12-01	RGC	Regal Entertainment	D	-2.87	3.90	EXPE	Expedia	A	2.44	3.90
2015-12-01	GIS	General Mills	C	-1.84	2.30	HRL	Hormel Foods	A	2.44	2.30
2015-12-01	MRK	Merck & Co	D	-2.86	3.60	HUM	Humana	A	2.45	3.60
2015-12-01	COP	Conocophillips	D	-2.90	2.30	TSO	Tesoro	A	2.41	2.30
2015-12-01	T	At&t	D	-2.84	2.00	LVLT	Level 3 Communications	B	1.19	2.00
2015-12-01	UNP	Union Pacific	D	-2.89	2.40	FISV	Fiserv	A	2.60	2.40
2015-12-01	UTX	United Technologies	D	-2.87	2.40	CTAS	Cintas	A	2.58	2.40
2015-12-01	JPM	Jpmorgan Chase	C	-1.84	2.30	EFX	Equifax	A	2.63	2.30
2015-12-01	STJ	St Jude Medical Inc	D	-2.86	3.00	EW	Edwards Lifesciences	A	2.43	3.00
2016-01-01	AAPL	Apple	C	-1.87	3.90	BRCM	Broadcom Corp	A	2.39	3.90
2016-01-01	RGC	Regal Entertainment	D	-2.87	3.90	EXPE	Expedia	A	2.43	3.90
2016-01-01	MRK	Merck & Co	D	-2.86	3.60	HSIC	Henry Schein	A	2.51	3.60

Date	Ticker	Name	R	SM	W (%)	Ticker	Name	R	SM	W (%)
2016-01-01	COP	Conocophillips	D	-2.91	2.00					
2016-01-01	UNP	Union Pacific	D	-2.89	2.30	CTAS	Cintas	A	2.56	2.30
2016-01-01	UTX	United Technologies	D	-2.87	2.50	FISV	Fiserv	A	2.56	2.50
2016-01-01	SRE	Sempra Energy	D	-2.85	1.90	NI	Nisource	A	3.00	1.90
2016-01-01	TOT	Total Adr	D	-2.86	2.00	TSO	Tesoro	A	2.37	2.00
2016-01-01	STJ	St Jude Medical Inc	D	-2.87	3.00	HUM	Humana	A	2.46	3.00
2016-02-01	AAPL	Apple	D	-2.88	3.70	FB	Facebook	A	2.34	3.70
2016-02-01	AMB	Prologis	C	-1.85	1.50	EXR	Extra Space Storage	A	2.84	1.50
2016-02-01	CPT	Camden Property Trust	D	-2.84	1.60	PSA	Public Storage	A	2.28	1.60
2016-02-01	RGC	Regal Entertainment	D	-2.88	3.70	SBUX	Starbucks	A	2.28	3.70
2016-02-01	SPG	Simon Property	C	-1.85	1.30	O	Realty Income	A	2.22	1.30
2016-02-01	GIS	General Mills	C	-1.84	2.40	HRL	Hormel Foods	A	2.48	2.40
2016-02-01		Minnesota Mng.& Mfg	D	-2.85	4.00	FISV	Fiserv	A	2.58	4.00
2016-02-01	MRK	Merck & Co	D	-2.87	3.60	HSIC	Henry Schein	A	2.50	3.60
2016-02-01	COP	Conocophillips	D	-2.93	1.70					
2016-02-01	PFE	Pfizer	D	-2.86	4.10	HUM	Humana	A	2.43	4.10
2016-02-01	UNP	Union Pacific	D	-2.90	2.30					
2016-02-01	UTX	United Technologies	D	-2.88	2.40	NOC	Northrop Grumman	A	2.49	2.40
2016-02-01	SRE	Sempra Energy	D	-2.85	2.00	NI	Nisource	A	3.00	2.00
2016-02-01	CSCO	Cisco Systems	D	-2.87	2.40	VRSN	Verisign	A	2.27	2.40
2016-02-01	TOT	Total Adr	D	-2.86	2.00	TSO	Tesoro	A	2.31	2.00
2016-02-01	PEP	Pepsico	C	-1.84	3.10	GMCR	Keurig Green Mountain	A	2.37	3.10
2016-02-01	JPM	Jpmorgan Chase	C	-1.85	2.20	EFX	Equifax	A	2.60	2.20
2016-02-01	STJ	St Jude Medical Inc	D	-2.88	2.70	EW	Edwards Lifesciences	A	2.41	2.70
2016-02-01	CVX	Chevron	D	-2.86	2.20	FSLR	First Solar	A	2.28	2.20
2016-03-01	AAPL	Apple	D	-2.87	3.80	FB	Facebook	A	2.32	3.80
2016-03-01	AMB	Prologis	D	-2.85	1.50	EXR	Extra Space Storage	A	2.79	1.50
2016-03-01	ABT	Abbott Laboratories	D	-2.86	3.10	HSIC	Henry Schein	A	2.55	3.10
2016-03-01	CPT	Camden Property Trust	D	-2.83	1.60	PSA	Public Storage	A	2.28	1.60
2016-03-01	SPG	Simon Property	C	-1.84	1.30	EQIX	Equinix Inc	A	2.24	1.30
2016-03-01	MRK	Merck & Co	D	-2.86	3.50	EW	Edwards Lifesciences	A	2.46	3.50
2016-03-01	OXY	Occidental Petroleum	D	-2.85	2.30	TSO	Tesoro	A	2.29	2.30
2016-03-01	COP	Conocophillips	D	-2.93	1.50					
2016-03-01	PFE	Pfizer	D	-2.86	4.00	BCR	C R Bard	A	2.33	4.00
2016-03-01	PNC	Pnc Financial Services	D	-2.86	3.20	SNA	Snap-on	A	2.52	3.20
2016-03-01	UNP	Union Pacific	D	-2.89	2.40	FISV	Fiserv	A	2.61	2.40
2016-03-01	UTX	United Technologies	D	-2.87	2.50	NOC	Northrop Grumman	A	2.50	2.50
2016-03-01	WFC	Wells Fargo	D	-2.85	3.20	ATVI	Activision Blizzard	A	2.51	3.20
2016-03-01	SRE	Sempra Energy	D	-2.84	2.00	NI	Nisource	A	3.00	2.00
2016-03-01	CSCO	Cisco Systems	D	-2.85	2.70	VRSN	Verisign	A	2.31	2.70
2016-03-01	TOT	Total Adr	D	-2.85	2.00	FSLR	First Solar	A	2.28	2.00
2016-03-01	PEP	Pepsico	C	-1.84	3.00	HRL	Hormel Foods	A	2.50	3.00
2016-03-01	JPM	Jpmorgan Chase	D	-2.85	2.10	EFX	Equifax	A	2.60	2.10
2016-03-01	STJ	St Jude Medical Inc	D	-2.88	2.70	CI	Cigna	A	2.31	2.70
2016-03-01	CVX	Chevron	D	-2.85	2.20	VLO	Valero Energy	A	2.17	2.20
2016-04-01	AAPL	Apple	D	-2.86	4.10	FB	Facebook	A	2.34	4.10
2016-04-01	ABT	Abbott Laboratories	D	-2.85	3.30	HSIC	Henry Schein	A	2.56	3.30
2016-04-01	MRK	Merck & Co	D	-2.86	3.70	EW	Edwards Lifesciences	A	2.47	3.70
2016-04-01	PFE	Pfizer	D	-2.86	3.80	BCR	C R Bard	A	2.35	3.80
2016-04-01	PNC	Pnc Financial Services	D	-2.86	3.20	PBCT	People's United Financial	B	1.18	3.20
2016-04-01	UNP	Union Pacific	D	-2.89	2.40	FISV	Fiserv	A	2.64	2.40
2016-04-01	WFC	Wells Fargo	D	-2.85	3.20	NI	Nisource	A	3.00	3.20
2016-04-01	TOT	Total Adr	D	-2.85	2.00	FSLR	First Solar	A	2.28	2.00
2016-04-01	JPM	Jpmorgan Chase	D	-2.85	3.20	EFX	Equifax	A	2.66	3.20
2016-04-01	STJ	St Jude Medical Inc	D	-2.88	2.70	CI	Cigna	A	2.30	2.70

Date	Ticker	Name	R	SM	W (%)	Ticker	Name	R	SM	W (%)
2016-05-02	AAPL	Apple	D	-2.88	3.40	FB	Facebook	A	2.35	3.40
2016-05-02	ABT	Abbott Laboratories	D	-2.85	3.00	HSIC	Henry Schein	A	2.56	3.00
2016-05-02	PFE	Pfizer	D	-2.85	4.10	EW	Edwards Lifesciences	A	2.56	4.10
2016-05-02	PNC	Pnc Financial Services	D	-2.85	3.30	CMA	Comerica	B	1.24	3.30
2016-05-02	UNP	Union Pacific	D	-2.88	2.60	FISV	Fiserv	A	2.61	2.60
2016-05-02	WFC	Wells Fargo	D	-2.85	3.30	ZION	Zions Bancorp	B	1.23	3.30
2016-05-02	TOT	Total ADR	D	-2.82	2.20	MUR	Murphy Oil	A	2.37	2.20
2016-05-02	JPM	Jpmorgan Chase	D	-2.84	3.30	EFX	Equifax	A	2.68	3.30
2016-05-02	STJ	St Jude Medical Inc	D	-2.84	3.60	BCR	C R Bard	A	2.36	3.60
2016-06-01	AAPL	Apple	D	-2.88	3.60	NVDA	Nvidia	A	2.40	3.60
2016-06-01	ABT	Abbott Laboratories	D	-2.85	3.00	HSIC	Henry Schein	A	2.56	3.00
2016-06-01	PNC	Pnc Financial Services	D	-2.85	3.30	CMA	Comerica	B	1.25	3.30
2016-06-01	UNP	Union Pacific	D	-2.89	2.50	FISV	Fiserv	A	2.65	2.50
2016-06-01	WFC	Wells Fargo	D	-2.85	3.30	ZION	Zions Bancorp	B	1.24	3.30
2016-06-01	JPM	Jpmorgan Chase	D	-2.84	3.40	EFX	Equifax	A	2.71	3.40
2016-07-01	AAPL	Apple	D	-2.88	3.40	NVDA	Nvidia	A	2.40	3.40
2016-07-01	ABT	Abbott Laboratories	D	-2.85	3.00	HSIC	Henry Schein	A	2.58	3.00
2016-07-01	MSFT	Microsoft	C	-1.85	3.90	FB	Facebook	A	2.34	3.90
2016-07-01	PNC	Pnc Financial Services	D	-2.86	2.90	CMA	Comerica	A	2.22	2.90
2016-07-01	WFC	Wells Fargo	D	-2.86	3.00	ZION	Zions Bancorp	B	1.21	3.00
2016-07-01	JPM	Jpmorgan Chase	D	-2.85	3.10	EFX	Equifax	A	2.72	3.10
2016-10-03	OXY	Occidental Petroleum	C	-1.85	2.80	CHK	Chesapeake Energy	A	2.67	2.80
2016-10-03	WFC	Wells Fargo	D	-2.86	2.70	ZION	Zions Bancorp	A	2.26	2.70
2016-11-01	ABT	Abbott Laboratories	D	-2.86	3.00	EW	Edwards Lifesciences	A	2.48	3.00
2016-11-01	MCD	Mcdonald's	C	-1.86	2.00	WYNN	Wynn Resorts	A	2.32	2.00
2016-11-01		Minnesota Mng.& Mfg	C	-1.85	2.30	GPN	Global Payments	A	2.35	2.30
2016-11-01	PCG	Pg&e	C	-1.84	2.20	OKE	Oneok	A	2.43	2.20
2016-11-01	PFE	Pfizer	C	-1.86	3.80	STJ	St Jude Medical Inc	A	2.26	3.80
2016-11-01	T	At&t	C	-1.86	2.90	CTL	Centurylink	A	2.19	2.90
2016-11-01	WFC	Wells Fargo	D	-2.85	2.90	CMA	Comerica	A	2.28	2.90
2016-12-01	ABT	Abbott Laboratories	D	-2.86	2.80	EW	Edwards Lifesciences	A	2.42	2.80
2016-12-01	GIS	General Mills	C	-1.86	2.40	STZ	Constellation Brands	A	2.30	2.40
2016-12-01	KO	Coca-cola	D	-2.86	2.30	LUK	Leucadia National	A	2.26	2.30
2016-12-01		Minnesota Mng.& Mfg	C	-1.84	2.30	URI	United Rentals	A	2.40	2.30
2016-12-01	MO	Altria	C	-1.85	3.10	ATVI	Activision Blizzard	A	2.56	3.10
2016-12-01	OXY	Occidental Petroleum	C	-1.84	2.70	CHK	Chesapeake Energy	A	2.74	2.70
2016-12-01	PCG	Pg&e	C	-1.85	2.10	OKE	Oneok	A	2.48	2.10
2016-12-01	PFE	Pfizer	C	-1.86	3.70	STJ	St Jude Medical Inc	A	2.27	3.70
2016-12-01	T	At&t	C	-1.85	3.00	LVLT	Level 3 Communications	A	2.20	3.00
2017-01-02	ABT	Abbott Laboratories	D	-2.86	2.70	EW	Edwards Lifesciences	A	2.49	2.70
2017-01-02	SPG	Simon Property	D	-2.87	1.10	EQIX	Equinix Inc	A	2.27	1.10
2017-01-02	GIS	General Mills	C	-1.86	2.20	STZ	Constellation Brands	A	2.31	2.20
2017-01-02	JNJ	Johnson & Johnson	C	-1.85	3.50	STJ	St Jude Medical Inc	A	2.27	3.50
2017-01-02	KO	Coca-cola	D	-2.85	2.20	TSN	Tyson Foods	A	2.27	2.20
2017-01-02	MDT	Medtronic	C	-1.87	1.70	DGX	Quest Diagnostics	A	2.25	1.70
2017-01-02		Minnesota Mng.& Mfg	C	-1.84	2.20	URI	United Rentals	A	2.41	2.20
2017-01-02	OXY	Occidental Petroleum	C	-1.84	3.10	CHK	Chesapeake Energy	A	2.74	3.10
2017-01-02	PCG	Pg&e	C	-1.85	1.90	OKE	Oneok	A	2.51	1.90
2017-01-02	PFE	Pfizer	C	-1.85	3.60	UNH	Unitedhealth	A	2.24	3.60
2017-01-02	NLSN	Nielsen	C	-1.87	2.00	TWX	Time Warner	A	2.27	2.00
2017-02-01	AMB	Prologis	C	-1.85	1.40	EQIX	Equinix Inc	A	2.29	1.40

Date	Ticker	Name	R	SM	W (%)	Ticker	Name	R	SM	W (%)
2017-02-01	SPG	Simon Property	D	-2.87	1.10	MAA	Mid-america Apartment Communities	A	2.23	1.10
2017-02-01	GIS	General Mills	C	-1.86	2.20	STZ	Constellation Brands	A	2.30	2.20
2017-02-01	JNJ	Johnson & Johnson	C	-1.85	3.40	EW	Edwards Lifesciences	A	2.51	3.40
2017-02-01	KO	Coca-cola	D	-2.85	2.20	LUK	Leucadia National	A	2.28	2.20
2017-02-01	MDT	Medtronic	D	-2.86	1.80	IDXX	Idexx Laboratories	A	2.30	1.80
2017-02-01	OXY	Occidental Petroleum	C	-1.85	2.90	CHK	Chesapeake Energy	A	2.67	2.90
2017-02-01	PCG	Pg&e	C	-1.84	1.90	OKE	Oneok	A	2.48	1.90
2017-02-01	PFE	Pfizer	C	-1.86	3.40	COO	Cooper Companies	A	2.26	3.40
2017-02-01	NLSN	Nielsen	D	-2.87	1.90	TWX	Time Warner	A	2.27	1.90
2017-03-01	RGC	Regal Entertainment	C	-1.85	3.80	UAL	United Continental	A	2.33	3.80
2017-03-01	SPG	Simon Property	D	-2.87	1.00	EQIX	Equinix Inc	A	2.29	1.00
2017-03-01	GIS	General Mills	C	-1.86	2.00	STZ	Constellation Brands	A	2.32	2.00
2017-03-01	KO	Coca-cola	D	-2.85	2.10	LUK	Leucadia National	A	2.31	2.10
2017-03-01	OXY	Occidental Petroleum	D	-2.85	2.70	WMB	Williams Companies	A	2.43	2.70
2017-03-01	NLSN	Nielsen	D	-2.86	2.00	SNI	Scripps Networks Interactive	A	2.28	2.00
2017-04-03	CPT	Camden Property Trust	D	-2.85	1.40	EQIX	Equinix Inc	A	2.31	1.40
2017-04-03	SPG	Simon Property	D	-2.87	1.00	ARE	Alexandria Real Estate Equities	A	2.26	1.00
2017-04-03	GIS	General Mills	D	-2.87	2.10	STZ	Constellation Brands	A	2.33	2.10
2017-04-03	OXY	Occidental Petroleum	D	-2.86	2.60	WMB	Williams Companies	A	2.45	2.60
2017-04-03	SYN	Sysco	C	-1.85	2.10	ULTA	Ultra Beauty	A	2.55	2.10
2017-04-03	NLSN	Nielsen	D	-2.87	1.90	TWX	Time Warner	A	2.27	1.90
2017-05-01	CPT	Camden Property Trust	D	-2.85	1.40	EQIX	Equinix Inc	A	2.32	1.40
2017-05-01	SPG	Simon Property	D	-2.88	1.00	ARE	Alexandria Real Estate Equities	A	2.26	1.00
2017-05-01	GIS	General Mills	D	-2.87	2.00	STZ	Constellation Brands	A	2.35	2.00
2017-05-01	OXY	Occidental Petroleum	D	-2.86	2.50	WMB	Williams Companies	A	2.46	2.50
2017-05-01	SYN	Sysco	C	-1.84	2.10	ULTA	Ultra Beauty	A	2.55	2.10
2017-05-01	NLSN	Nielsen	D	-2.88	1.80	TWX	Time Warner	A	2.27	1.80
2017-06-01	CPT	Camden Property Trust	D	-2.85	1.40	EQIX	Equinix Inc	A	2.34	1.40
2017-06-01	SPG	Simon Property	D	-2.89	0.90	ARE	Alexandria Real Estate Equities	A	2.27	0.90
2017-06-01	GIS	General Mills	D	-2.87	2.00	STZ	Constellation Brands	A	2.38	2.00
2017-06-01	OXY	Occidental Petroleum	D	-2.87	2.40	WMB	Williams Companies	A	2.43	2.40
2017-06-01	PFE	Pfizer	C	-1.84	3.50	IDXX	Idexx Laboratories	A	2.42	3.50
2017-06-01	T	At&t	C	-1.85	2.70	LVL	Level 3 Communications	A	2.23	2.70
2017-06-01	WFC	Wells Fargo	C	-1.85	2.70	CMA	Comerica	A	2.37	2.70
2017-06-01	NLSN	Nielsen	D	-2.88	1.80	TWX	Time Warner	A	2.28	1.80
2017-07-03	RGC	Regal Entertainment	D	-2.85	3.50	AAL	American Airlines	A	2.33	3.50
2017-07-03	SPG	Simon Property	D	-2.88	0.90	EQIX	Equinix Inc	A	2.32	0.90
2017-07-03	GIS	General Mills	D	-2.87	1.90	STZ	Constellation Brands	A	2.39	1.90
2017-07-03	OXY	Occidental Petroleum	D	-2.86	2.50	WMB	Williams Companies	A	2.46	2.50
2017-07-03	PFE	Pfizer	C	-1.84	3.60	ALGN	Align Technology	A	2.42	3.60
2017-07-03	T	At&t	D	-2.85	2.60	LVL	Level 3 Communications	A	2.22	2.60
2017-07-03	WFC	Wells Fargo	C	-1.84	2.90	CMA	Comerica	A	2.40	2.90
2017-07-03	FP	Total	C	-1.85	2.70	NVDA	Nvidia	A	3.00	2.70
2017-07-03	CVX	Chevron	C	-1.85	2.90	CXO	Concho Resources	A	2.29	2.90
2017-07-03	NLSN	Nielsen	D	-2.88	1.70	TWX	Time Warner	A	2.28	1.70
2017-08-01	RGC	Regal Entertainment	D	-2.86	3.20	PCLN	The Priceline	A	2.35	3.20
2017-08-01	SPG	Simon Property	D	-2.88	0.90	EQIX	Equinix Inc	A	2.35	0.90
2017-08-01	GIS	General Mills	D	-2.87	1.90	STZ	Constellation Brands	A	2.40	1.90

Date	Ticker	Name	R	SM	W (%)	Ticker	Name	R	SM	W (%)
2017-08-01	OXY	Occidental Petroleum	D	-2.86	2.50	WMB	Williams Companies	A	2.47	2.50
2017-08-01	PFE	Pfizer	C	-1.84	3.50	ALGN	Align Technology	A	2.48	3.50
2017-08-01	T	At&t	D	-2.85	2.70	LVL	Level 3 Communications	A	2.22	2.70
2017-08-01	WFC	Wells Fargo	C	-1.85	2.80	CMA	Comerica	A	2.39	2.80
2017-08-01	FP	Total	C	-1.85	2.70	NVDA	Nvidia	A	3.00	2.70
2017-09-01	RGC	Regal Entertainment	D	-2.89	2.70	PCLN	The Priceline	A	2.32	2.70
2017-09-01	SPG	Simon Property	D	-2.88	0.90	EQIX	Equinix Inc	A	2.36	0.90
2017-09-01	GIS	General Mills	D	-2.84	1.90	STZ	Constellation Brands	A	2.41	1.90
2017-09-01	MO	Altria	C	-1.86	2.70	ATVI	Activision Blizzard	A	3.00	2.70
2017-09-01	OXY	Occidental Petroleum	D	-2.87	2.40	WMB	Williams Companies	A	2.45	2.40
2017-09-01	T	At&t	D	-2.85	2.60	LVL	Level 3 Communications	A	2.20	2.60
2017-09-01	WFC	Wells Fargo	C	-1.86	2.70	CMA	Comerica	A	2.37	2.70
2017-09-01	FP	Total	C	-1.85	2.80	NVDA	Nvidia	A	3.00	2.80
2017-10-02	RGC	Regal Entertainment	D	-2.88	2.60	PCLN	The Priceline	A	2.32	2.60
2017-10-02	SPG	Simon Property	D	-2.88	0.90	EQIX	Equinix Inc	A	2.34	0.90
2017-10-02	GIS	General Mills	D	-2.85	1.70	STZ	Constellation Brands	A	2.40	1.70
2017-10-02	MO	Altria	C	-1.87	2.50	ATVI	Activision Blizzard	A	3.00	2.50
2017-10-02	OXY	Occidental Petroleum	D	-2.86	2.50	WMB	Williams Companies	A	2.45	2.50
2017-10-02	WFC	Wells Fargo	C	-1.85	2.80	CMA	Comerica	A	2.41	2.80
2017-11-01	RGC	Regal Entertainment	D	-2.88	2.50	PCLN	The Priceline	A	2.33	2.50
2017-11-01	SPG	Simon Property	D	-2.88	0.90	EQIX	Equinix Inc	A	2.36	0.90
2017-11-01	GIS	General Mills	D	-2.85	1.70	STZ	Constellation Brands	A	2.44	1.70
2017-11-01	MO	Altria	D	-2.86	2.60	ATVI	Activision Blizzard	A	3.00	2.60
2017-11-01	NLSN	Nielsen	D	-2.86	1.50	TWX	Time Warner	A	2.27	1.50
2017-12-01	SPG	Simon Property	D	-2.88	0.90	EQIX	Equinix Inc	A	2.36	0.90
2017-12-01	MDT	Medtronic	C	-1.85	1.70	ALGN	Align Technology	A	2.72	1.70
2017-12-01	MO	Altria	D	-2.85	2.60	ATVI	Activision Blizzard	A	2.98	2.60
2017-12-01	MRK	Merck & Co	D	-2.86	2.20	ISRG	Intuitive Surgical	A	2.40	2.20
2017-12-01	PCG	Pg&e	C	-1.87	1.50	NRG	Nrg Energy	A	2.47	1.50
2017-12-01	NLSN	Nielsen	D	-2.86	1.50	NWSA	News	A	2.26	1.50
2017-12-29	MDT	Medtronic	C	-1.85	1.70	ALGN	Align Technology	A	2.63	1.70
2017-12-29	MRK	Merck & Co	D	-2.86	2.30	IDXX	Idexx Laboratories	A	2.39	2.30
2017-12-29	PCG	Pg&e	D	-2.90	1.30	NRG	Nrg Energy	A	2.48	1.30
2017-12-29	NLSN	Nielsen	D	-2.86	1.50	NWSA	News	A	2.26	1.50