



TRENDRATING GLOBAL WEEKLY REPORT

Week

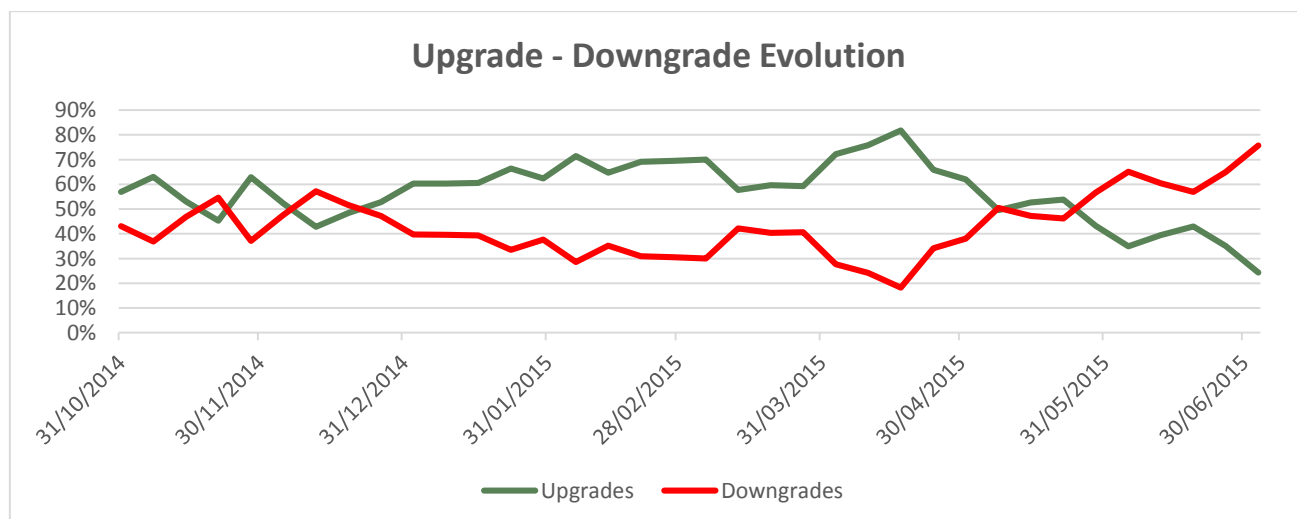
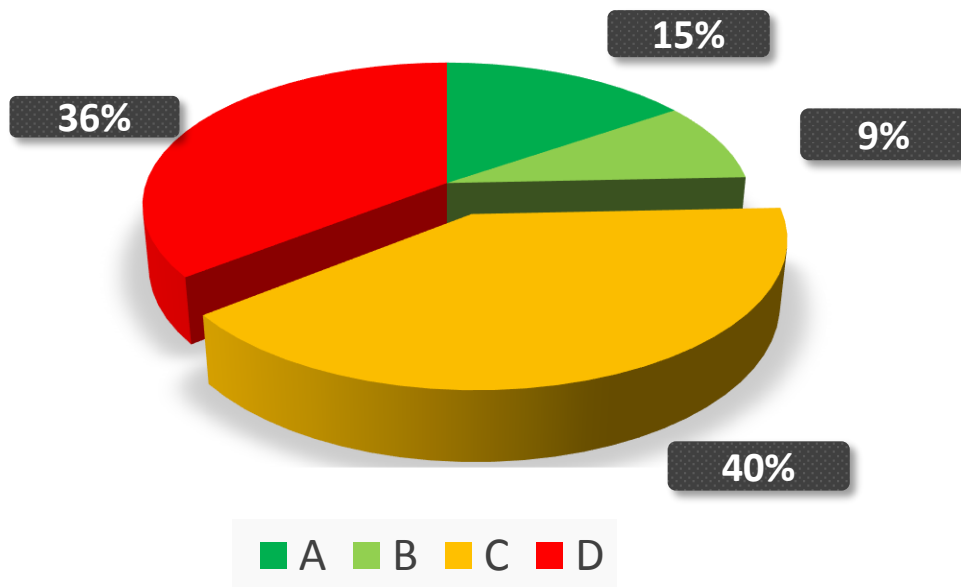
June 29, 2015 – July 3, 2015

SUMMARY OF WEEKLY EVENTS

Summary

Numbers shown below represent the Upgrades and Downgrades of stocks that occurred during the week. The *Upgrades - Downgrades evolution* chart captures the historical movement of Upgrades and Downgrades.

| Upgrades | | Downgrades | |
|----------|------------|------------|------------|
| A | 108 | C | 282 |
| B | 63 | D | 250 |
| | 171 | | 532 |



SUMMARY OF WEEKLY EVENTS

The following stocks are selected from the weekly Alerts, sorted by higher market capitalization and respecting the following proportions: Northern America 30%, Europe 40% and Rest of the World 30%.

| <i>Upgrades</i> | | | <i>Downgrades</i> | | |
|-----------------|------------------|--------|-------------------|-------------------|--------|
| Ticker | Name | Rating | Ticker | Name | Rating |
| MET | Metlife | A | RY | Royal Bank Canada | D |
| RCI.B | Rogers Comm -b- | B | F | Ford Motor | D |
| EMN | Eastman Chemical | A | OXY | Occid.petrol Corp | D |
| ENX | Euronext | A | NOVN | Novartis N | C |
| TSB | Tsb Banking Grp | A | NESN | Nestle N | C |
| COMH | Com Hem Hold -a- | A | FP | Total | C |
| ZPLA | Zoopla Prop | A | RDSA | Royal Dutch Shell | D |
| IN500188 | Hindustan Zinc | A | CSL | Csl | C |
| GCARSOA1 | Grupo Carso-a1 | B | O39 | Ocbc | C |
| SAHOL | Sabancı Holding | A | HK1038 | C K Infra | C |

SIGNIFICANT POSITIVE PERFORMANCE

The table below shows the performance since rated of a selection of stocks, upgraded to an **A** rating within the last three months.

| 3-MONTH SIGNIFICANT PERFORMANCE OF A RATED STOCKS | | | | |
|--|---------------------|-------------|-----|-------------|
| Ticker | Name | Last Price | UPI | Performance |
| GTXI | Gtx | \$ 1.57 | 12% | 104.29% |
| ADMS | Adamas Pharmaceut | \$ 26.47 | 7% | 124.97% |
| OPYGY | Polyus Gold Sp Adr | \$ 15.27 | 15% | 49.29% |
| ALONC | Oncodesign | € 16.85 | 12% | 45.43% |
| TILS | Tiziana Life Sc | £ 1.88 | 5% | 40.61% |
| AIE | Anite | £ 1.27 | 61% | 33.68% |
| TCM | Telit Comm | £ 2.99 | 11% | 27.71% |
| HK2998 | Bep Intl Hld 100000 | hkd 2.15 | 39% | 1854.55% |
| HK2326 | Bep Intl Hldgs | hkd 2.15 | 39% | 1854.55% |
| KR102940 | Kls | krw 279.50K | 26% | 279.20% |

*UPI: Upside Potential Indicator; calculated as an average of the Duration and Magnitude indicator values.

SIGNIFICANT NEGATIVE PERFORMANCE

The table below shows the performance since rated of a selection of stocks, downgraded **D** within the last three months.

3-MONTH SIGNIFICANT NEGATIVE PERFORMANCE OF **D** RATED STOCKS

| Ticker | Name | Last Price | Performance |
|----------|---------------------|------------|-------------|
| SD | Sandridge Energy | \$ 0.76 | -56.70% |
| EXXI | Energy Usd Unrestr | \$ 2.31 | -36.89% |
| MU | Micron Technology | \$ 19.07 | -33.95% |
| GW11 | Gerry Weber Intl | € 21.00 | -32.24% |
| ORX | Orexo | sek 70.00 | -25.73% |
| AO. | Ao World | £ 1.38 | -21.72% |
| ODHN | Orascom Devl Hldg N | chf 12.30 | -21.66% |
| FMF | Famur | pln 1.89 | -39.42% |
| IN532286 | Jindal Stl & Pwr Ds | inr 89.30 | -34.82% |
| TW2498 | Htc | twd 73.80 | -33.21% |

The evaluations, rankings and information provided by Trendrating (the "Services") are provided solely for the use of finance professionals (the "Users") who have been issued a license to use the Services by Trendrating and who, by nature of their status as investment professions understand, or are expected to understand, the complexity of finance products, the functioning of the markets and the risks inherent in them. The Services are **not** offered for use by persons not employed or actively working as professionals in the finance and investment industry.

The Services are to be used entirely at the risk of the Users. Included in the Services are forward-looking statements that are based on observations, assumptions and calculations that reflect Trendrating's expectations. Forward-looking statements are subject to numerous risks and uncertainties that could cause actual results to materially differ from those expectations. The Services are **not intended to constitute a recommendation** of any specific security or financial product and are to be implemented **solely in conjunction with or as part of a complete investment evaluation** conducted by the Users.

Under no circumstances shall Trendrating, its officers, directors, employees or agents be liable for any damages, lost profits or investment losses that result in any way from use of the Services or any interruptions, errors or delays in the Services.