



TRENDRATING GLOBAL WEEKLY REPORT

Week

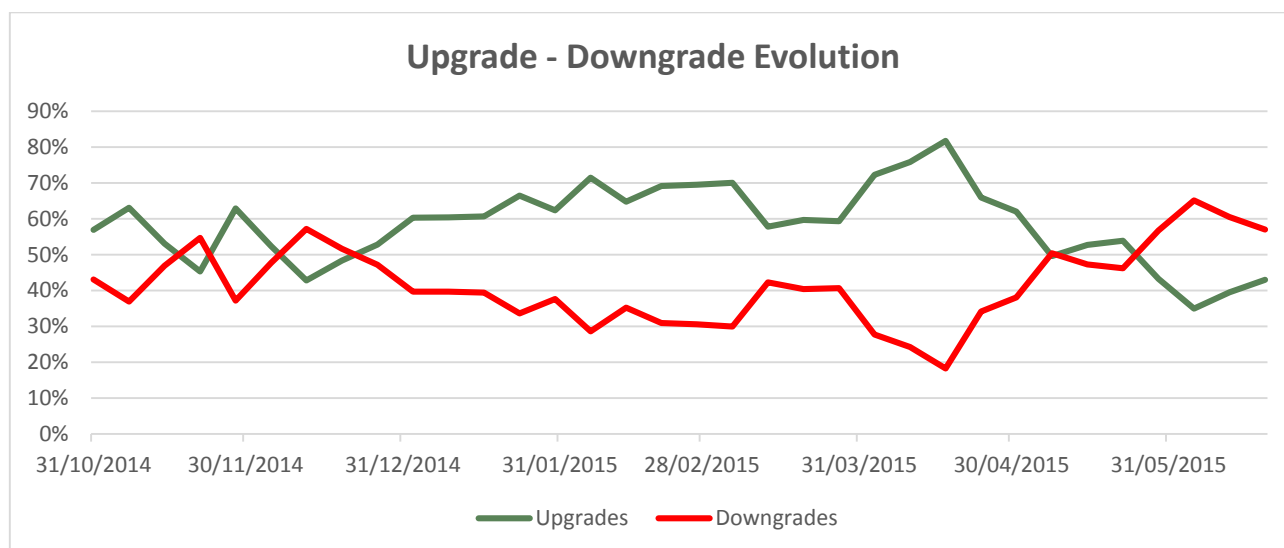
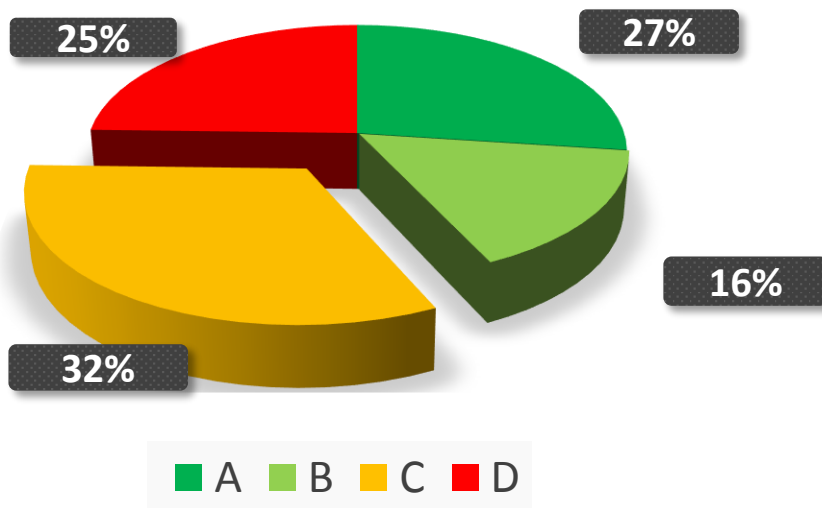
June 13, 2015 – June 19, 2015

SUMMARY OF WEEKLY EVENTS

Summary

Numbers shown below represent the Upgrades and Downgrades of stocks that occurred during the week. The *Upgrades - Downgrades evolution* chart captures the historical movement of Upgrades and Downgrades.

Upgrades		Downgrades	
A	128	C	153
B	75	D	116
	203		269



SUMMARY OF WEEKLY EVENTS

The following stocks are selected from the weekly Alerts, sorted by higher market capitalization and respecting the following proportions: Northern America 30%, Europe 40% and Rest of the World 30%.

<i>Upgrades</i>			<i>Downgrades</i>		
Ticker	Name	Rating	Ticker	Name	Rating
T	At&t	A	INTC	Intel	D
BTI	Brit Amer Sp Adr	B	TJX	Tjx Companies	C
HNNMY	Hennes Unsp Adr	B	MAR	Marriott Intl	C
RIGD	Relnc Inds Gdr-144a	B	SU	Schneider Electric	C
LTOD	Lrs Tb Sp Gdr Reg-s	B	LGEN	Legal & General	C
CNA	Centrica	B	BA.	Bae Systems	C
OCDO	Ocado Group	A	MAERSK B	Ap Moeller-maers-b-	C
JP6501	Hitachi Ltd	A	IN524715	Sun Pharmaceutical	C
PETR4	Petroleo Bras Pfd	A	ASII	Astra International	C
ORG	Origin Energy	A	BBRI	Bank Rakyat Ind -b-	C

SIGNIFICANT POSITIVE PERFORMANCE

The table below shows the performance since rated of a selection of stocks, upgraded to an **A** rating within the last three months.

3-MONTH SIGNIFICANT PERFORMANCE OF A RATED STOCKS				
Ticker	Name	Last Price	UPI	Performance
BLDR	Builders Firstsourc	\$ 13.31	15%	98.66%
SGYP	Synergy Pharma	\$ 9.17	15%	98.48%
GTXI	Gtx	\$ 1.44	15%	87.38%
AMC	Amur Minerals	£ 0.37	39%	182.62%
FING B	Fingerprint -b-	sek 131.75	26%	146.26%
ALONC	Oncodesign	€ 16.39	15%	118.83%
TILS	Tiziana Life Sc	£ 1.89	5%	41.04%
HK2998	Bep Intl Hld 100000	hkd 2.60	39%	2263.64%
HK279	Freeman Fin	hkd 0.74	39%	190.20%
HK360	New Focus Auto Tech	hkd 2.03	15%	156.96%

***UPI**: Upside Potential Indicator; calculated as an average of the Duration and Magnitude indicator values.

SIGNIFICANT NEGATIVE PERFORMANCE

The table below shows the performance since rated of a selection of stocks, downgraded **D** within the last three months.

3-MONTH SIGNIFICANT NEGATIVE PERFORMANCE OF **D** RATED STOCKS

Ticker	Name	Last Price	Performance
GLPW	Glbl Pwr Equip	\$ 7.95	-39.82%
KLS	Kelso Techs	cad 3.35	-39.64%
SD	Sandridge Energy	\$ 1.09	-38.07%
GW11	Gerry Weber Intl	€ 20.36	-34.30%
EXAE	Hellenic Exchanges	€ 3.61	-30.84%
PPC	Public Power	€ 3.65	-27.00%
FFGRP	Folli Follie Gr	€ 20.19	-25.22%
IN533096	Adani Power	inr 27.50	-32.93%
IN532286	Jindal Stl & Pwr Ds	inr 93.70	-31.61%
FMF	Famur	pln 2.16	-30.77%

The evaluations, rankings and information provided by Trendrating (the "Services") are provided solely for the use of finance professionals (the "Users") who have been issued a license to use the Services by Trendrating and who, by nature of their status as investment professions understand, or are expected to understand, the complexity of finance products, the functioning of the markets and the risks inherent in them. The Services are **not** offered for use by persons not employed or actively working as professionals in the finance and investment industry.

The Services are to be used entirely at the risk of the Users. Included in the Services are forward-looking statements that are based on observations, assumptions and calculations that reflect Trendrating's expectations. Forward-looking statements are subject to numerous risks and uncertainties that could cause actual results to materially differ from those expectations. The Services are **not intended to constitute a recommendation** of any specific security or financial product and are to be implemented **solely in conjunction with or as part of a complete investment evaluation** conducted by the Users.

Under no circumstances shall Trendrating, its officers, directors, employees or agents be liable for any damages, lost profits or investment losses that result in any way from use of the Services or any interruptions, errors or delays in the Services.